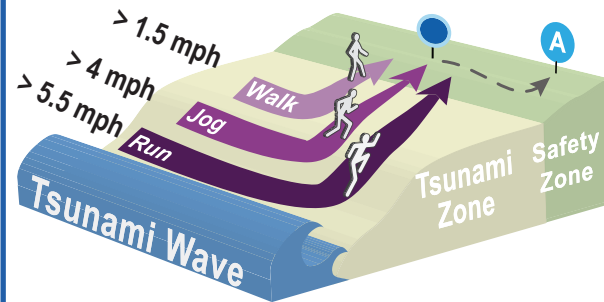


## LONG AND SLOW, TIME TO GO!

IF YOU FEEL STRONG SHAKING,  
A TSUNAMI MAY BE COMING...

- **Drop, Cover, and Hold On** until the earthquake is over. Protect yourself.
- **Run Inland to High Ground.**  
**LEAVE IMMEDIATELY. DO NOT WAIT** for an official warning. **GO ON FOOT.**
- **Follow Evacuation Route Signs and Arrows** to your nearest **safety destination** out of the tsunami zone.
- **Do not slow down.** Maintain your speed until you leave the tsunami zone. Safety may be identified by **BLUE LINES** painted across the road or by an Assembly Area\* sign. Once safe, go to the nearest Assembly Area\* or neighborhood gathering site.
- **Do not return to the beach.** Large waves may continue to come onshore for up to 12 hours. **WAIT** for official NOAA tsunami cancellation and a **cautionary re-entry notice** by local emergency officials before returning to low lying areas.

## HOW TO USE THIS MAP



1. On the tsunami evacuation map, find the nearest colored arrow to your location.
2. Arrow path shows your evacuation route to high ground.
3. Arrow color indicates how fast you must travel. If there is more than one arrow next to your starting location, the slower speed is sufficient. Travel faster if you can.
4. Maintain your speed until you reach high ground. Do not slow down. The safety zone may be identified by blue lines painted on the road, "Leaving Hazard Zone" signs, or Assembly Area signs.
5. Orange dotted lines define neighborhood evacuation zones. These zones provide a way to determine your safety destination without knowing a specific route.
6. If you can safely take a faster route, take it!



**A** \*Assembly Areas are shown on the map. Do not confuse Assembly Areas with Evacuation Centers, which are short-term help centers set up after a disaster occurs.



[www.OregonTsunami.org](http://www.OregonTsunami.org)

## Bayside Gardens

Tillamook County



This information could  
**save your life** –  
Please read it and share it  
with your family and friends.



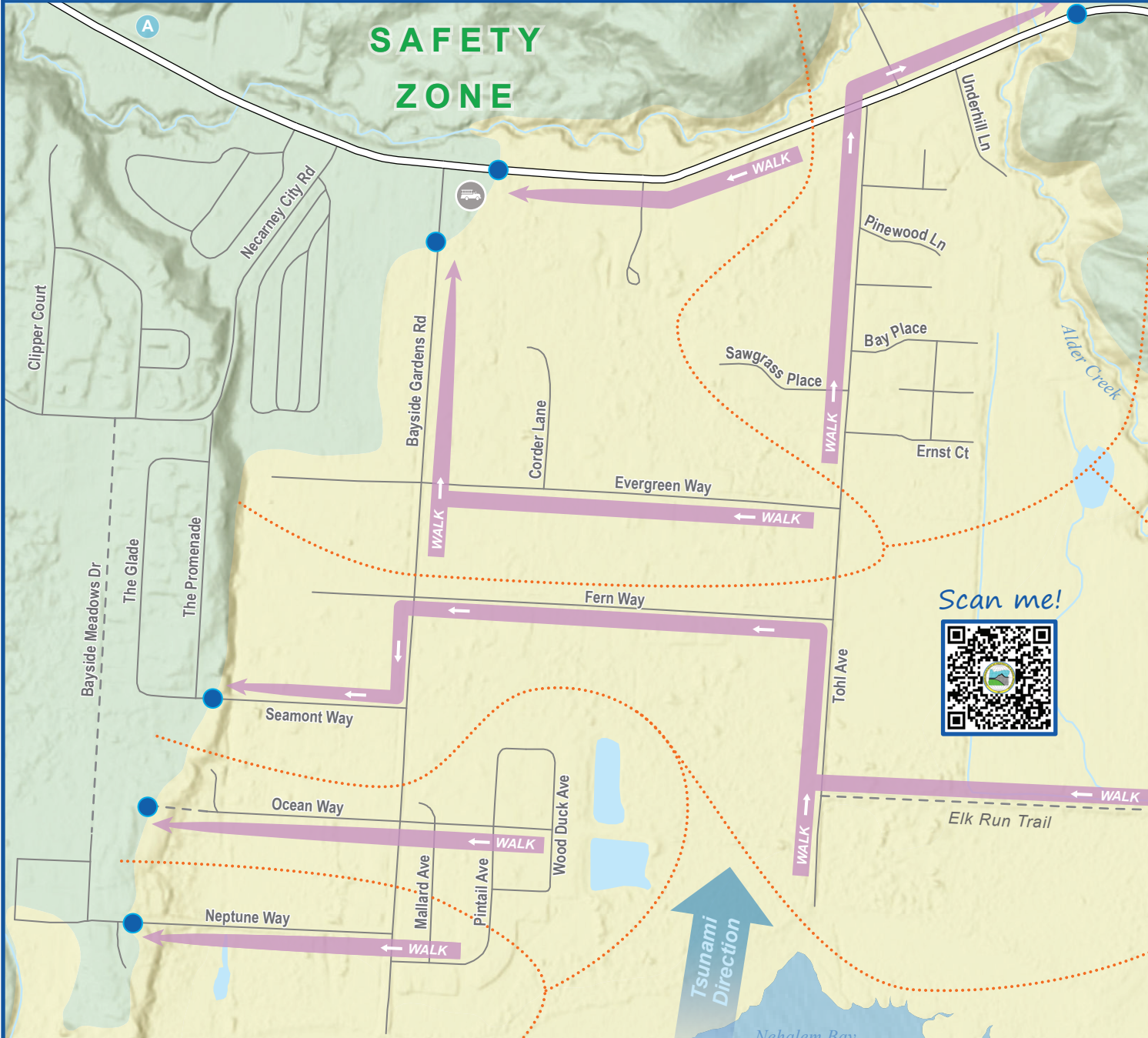
**EVACUATION MAP ON REVERSE**



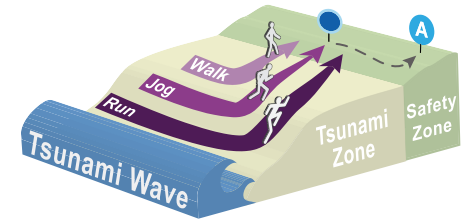
# TSUNAMI EVACUATION ROUTES

Pedestrian Map For A Local Cascadia Earthquake

## BAYSIDE GARDENS, OR



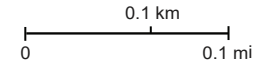
**Leave immediately  
Do not slow down**



Walk: >1.5 mph | Jog: > 4 mph | Sprint: > 5.5 mph  
Speed is based on starting to evacuate 10 minutes after the start of the earthquake

1. Find the nearest colored arrow to your location
2. Maintain speed shown by route color until you reach high ground
3. Use neighborhood evacuation zones and arrows to determine fastest evacuation route
4. If you are aware of a more direct route, take it!

- Safety destination**  
Out of tsunami zone
- Assembly site**
- Neighborhood evacuation zone**  
Nearest exit destination for a defined area
- Tsunami zone**



MAP REVISED DECEMBER 2023



The work presented on this map is based on cartographic design by the University of Oregon InfoGraphics Lab, Department of Geography, in conjunction with the Oregon Department of Geology and Mineral Industries

Scan me!

