



Introduction

The Oregon Department of Geology and Mineral Industries (DOGAMI) has been identifying and mapping the Oregon inundation hazard along the Oregon coast since 1994. In Oregon, DOGAMI manages the National Tsunami Hazard Mitigation Program, which has been administered by the National Oceanic and Atmospheric Administration (NOAA) since 1995. DOGAMI's work is designed to help cities, counties, and other sites in coastal areas reduce the potential for disastrous tsunami-related consequences by understanding and mitigating this geologic hazard. Using federal funding awarded by NOAA, DOGAMI has developed a new generation of tsunami inundation maps to help residents and visitors along the entire Oregon coast prepare for the next Cascadia Subduction Zone (CSZ) earthquake and tsunami.

The CSZ is the tectonic plate boundary between the North American Plate and the Juan de Fuca Plate (Figure 1). These plates are converging at a rate of about 1.5 inches per year, but the movement is not smooth and continuous. Rather, the plates lock in place, and unreleased energy builds over time. At intervals, this accumulated energy is violently released in the form of a megathrust earthquake rupture, where the North American Plate suddenly slips westward over the Juan de Fuca Plate. This rupture causes a vertical displacement of water that creates a tsunami (Figure 2). Similar rupture processes and tsunamis have occurred elsewhere on the planet where subduction zones exist; for example, offshore Chile in 1960 and 2010, offshore Alaska in 1964, near Sumatra in 2004, and offshore Japan in March 2011.

CSZ Frequency: Comprehensive research of the offshore geologic record indicates that at least 19 great ruptures of the full length of the CSZ have occurred off the Oregon coast over the past 10,000 years (Figure 3). All 19 of these full-rupture CSZ events were likely magnitude 8.9 to 9.2 earthquakes (Witter and others, 2011). The most recent CSZ event happened approximately 500 years ago on January 26, 1700. Sand deposits carried onshore and left by the 1700 event have been found 1.2 miles inland; older tsunami sand deposits have also been discovered in estuaries 6 miles inland. As shown in Figure 3, the range in time between these 19 events varies from 110 to 1,150 years, with a median time interval of 490 years. In 2003 the United States Geological Survey (USGS) released the results of a study announcing that the probability of a magnitude 8.9 CSZ earthquake occurring over the next 30 years is 10%, and that such earthquakes occur about every 500 years (USGS 2003).

CSZ Effects/Implications: The sizes of the earthquake and its resultant tsunami are primarily a function of the slip that takes place when the North American Plate slips westward over the Juan de Fuca Plate during a CSZ event. DOGAMI has modeled a wide range of earthquake and tsunami sizes that take into account different fault geometries that could amplify the amount of seawater displacement and increase tsunami inundation. Seismic/geophysical profiles show that there may be a steep slope fault running nearly parallel to the CSZ but closer to the Oregon coastline (Figure 1). The effect of this steep fault moving during a full-rupture CSZ event would be an increase in the amount of vertical displacement of the Pacific

Ocean, resulting in an increase of the tsunami inundation onshore in Oregon. DOGAMI has also incorporated physical evidence that suggests that portions of the coast may drop 4 to 10 feet during the earthquake; this effect is known as subsidence. Detailed information on fault geometries, subsidence, computer models, and the methodology used to create the tsunami scenarios presented on this map can be found in DOGAMI Special Papers 41 (Priest and others, 2009) and 43 (Witter and others, 2011).

Map Explanation

This tsunami inundation map displays the output of computer models representing the selected tsunami scenarios, all of which include the earthquake-produced subsidence and the tsunami-amplifying effects of the splash fault. Each scenario assumes that a tsunami occurs at Mean Higher High Water (MHHW) tide. MHHW is defined as the average height of the higher high tides observed over an 18-year period at the Garibaldi tide gauge. To make it easier to understand this scientific material and to enhance the educational aspects of hazard mitigation and response, the five scenarios are labeled as "T-shirt sizes" ranging from Small, Medium, Large, Extra Large, to Extra Extra Large (S, M, L, XL, XXL). The map legend depicts the respective amounts of slip, the frequency of occurrence, and the earthquake magnitude for these five scenarios. Figure 4 shows the cumulative number of buildings inundated within the map area.

The computer simulation model output is provided to DOGAMI as millions of points with values that indicate whether the location of each point is wet or dry. These points are converted to wet and dry contour lines that form the extent of inundation. The transition area between the wet and dry contour lines is termed the Wet/Dry Zone, which equals to the amount of error in the model when determining the maximum inundation for the each scenario. Only the XXL Wet/Dry Zone is shown on this map.

This map also shows the regularity tsunami inundation line (Oregon Revised Statutes 455.446 and 455.447), commonly known as the Senate Bill 379 line. Senate Bill 379 (1995) instructed DOGAMI to establish the area of expected tsunami inundation based on scientific evidence and tsunami modeling in order to prohibit the construction of new essential and special occupancy structures in the tsunami inundation zone (Priest, 1995).

Time Series Graphs and Water Elevation Profiles: In addition to the tsunami scenarios, the computer model produces time series data for "gauge" locations in the area. These points are simulated gauge stations that record the time, in seconds, of the tsunami wave arrival and the wave height observed. It is especially noteworthy that the greatest wave height and velocity observed are not necessarily associated with the first tsunami wave to arrive onshore. Therefore evacuees should not assume that the tsunami event is over until the proper authorities have sounded the all-clear signal at the end of the evacuation. Figure 5 depicts the tsunami waves as they arrive at a simulated gauge station. Figure 6 depicts the overall wave height and inundation extent for all five scenarios at the profile location shown on this map.

Cascadia Subduction Zone Setting

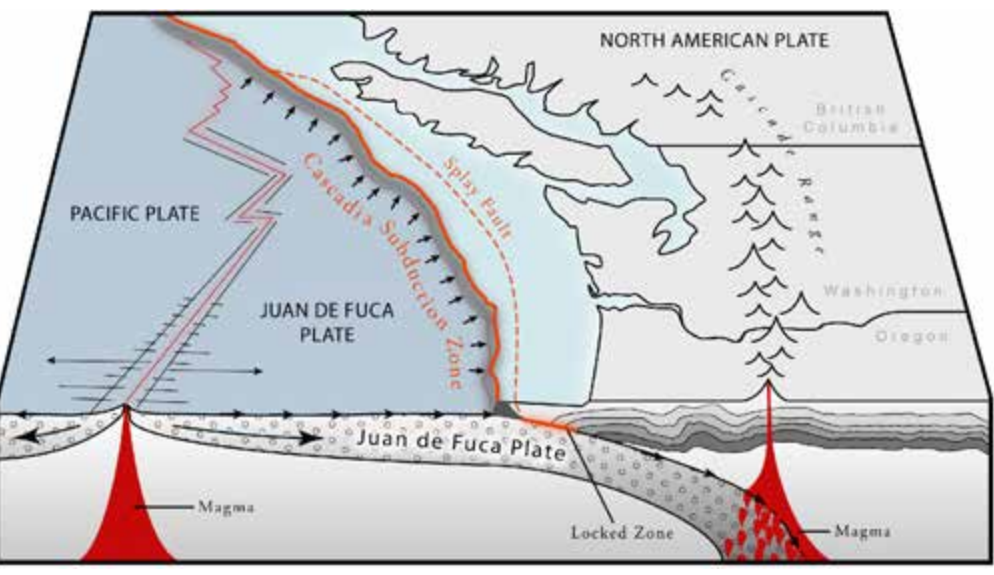


Figure 1: This block diagram depicts the tectonic setting of the region. See Figure 2 for the sequence of events that occur during a Cascadia Subduction Zone megathrust earthquake and tsunami.

How Tsunamis Occur

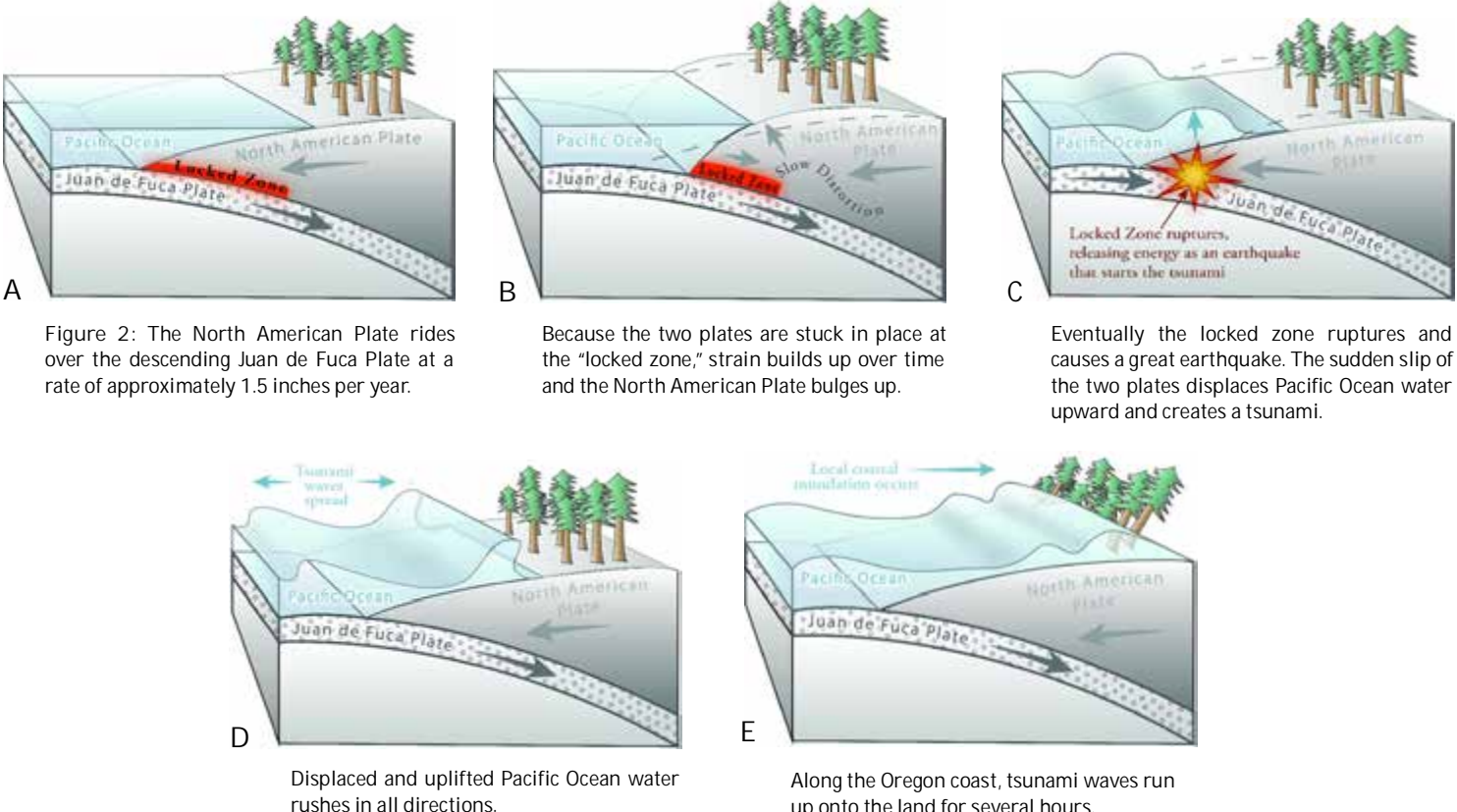
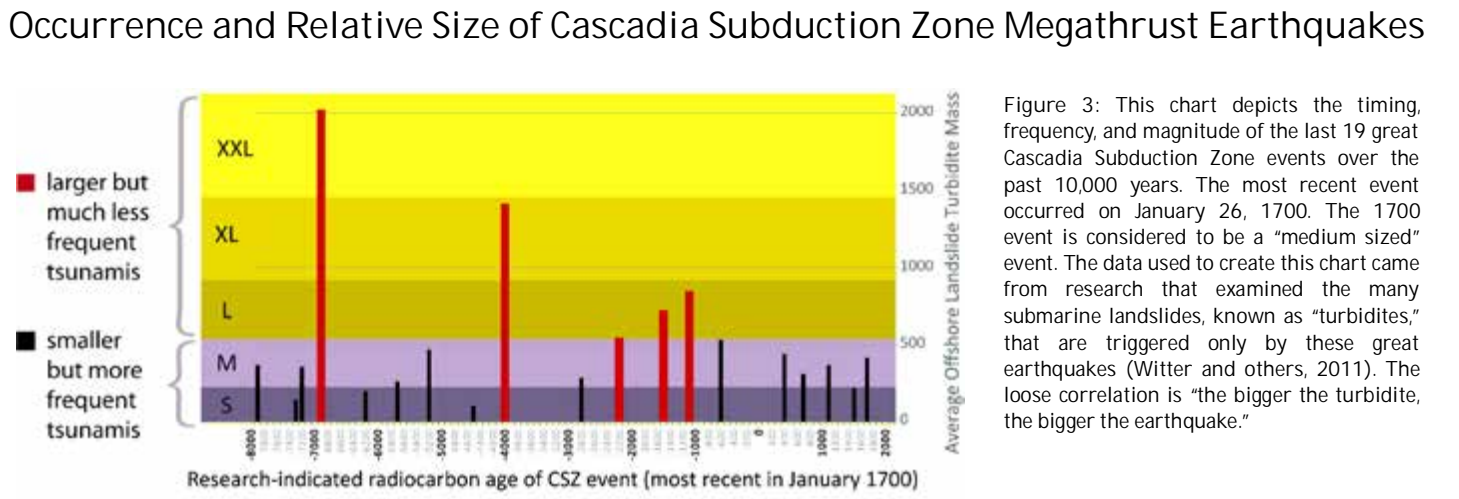


Figure 2: The North American Plate and the Juan de Fuca Plate are shown in a locked state, with the Juan de Fuca Plate bulging up. When the plates suddenly slip, the ocean water is displaced, creating a tsunami. The diagram shows the tsunami waves running up the coast and inland.



Buildings within Tsunami Inundation Zones

	Entire Map Area	City of Nehalem	City of Wheeler	Unincorporated Areas
Total Buildings	967	45	118	804
Buildings Within Tsunami Zones*				
Small	40	0	0	40
Medium	143	2	0	141
Large	227	9	1	217
Extra Large	304	27	3	274
Extra Extra Large	313	27	5	281
Percent of Buildings Within Tsunami Zones				
Small	4.1%	0.0%	0.0%	5.0%
Medium	14.8%	4.4%	0.0%	17.5%
Large	23.5%	20.0%	0.8%	27.0%
Extra Large	31.4%	60.0%	2.5%	34.2%
Extra Extra Large	32.4%	60.0%	4.2%	35.0%

*Building counts shown are based on polygon centroids and are cumulative within the map area.

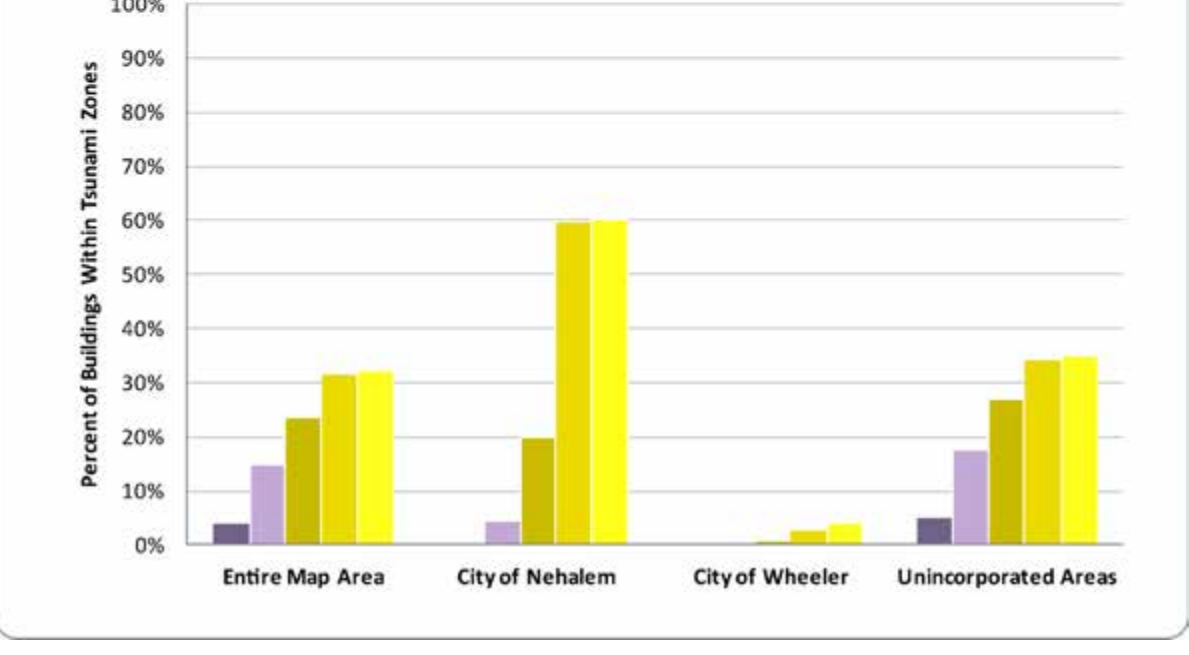


Figure 4: The table and chart show the number of buildings inundated for each "T-shirt" size scenario for cities and unincorporated portions of the map.

Estimated Tsunami Wave Height through Time for Simulated Gauge Station

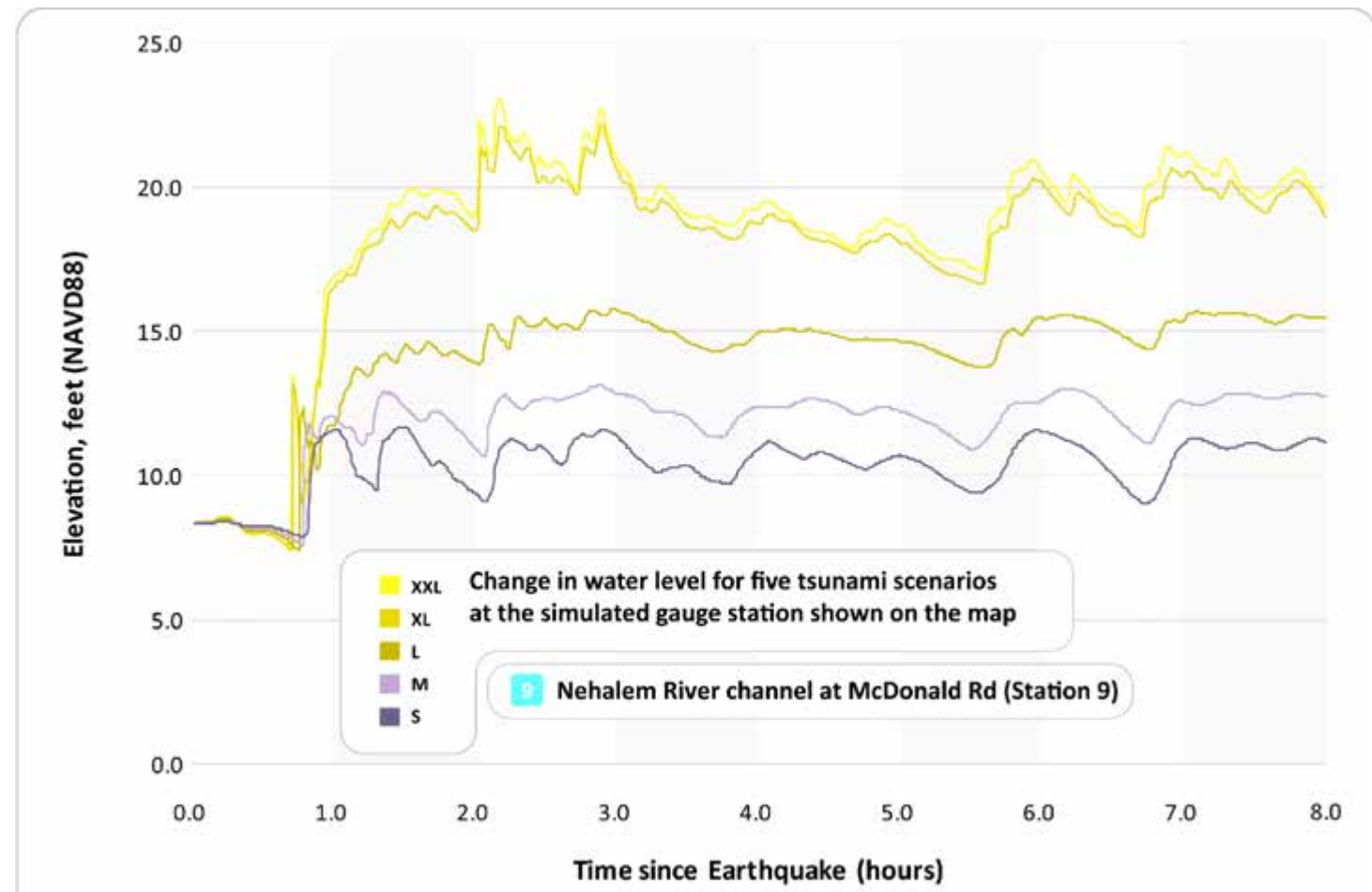


Figure 5: This chart depicts the tsunami waves as they arrive at the selected reference point (simulated gauge station). It shows the change in wave heights for all five tsunami scenarios over an 8-hour period. The starting wave elevation (0.0 hour) takes into account the local subsidence or uplift caused by the earthquake. Wave heights vary through time, and the first wave will not necessarily be the largest as waves interact and reflect off local topography and bathymetry. (Chart revised 07/12/2012)

Maximum Wave Elevation Profile

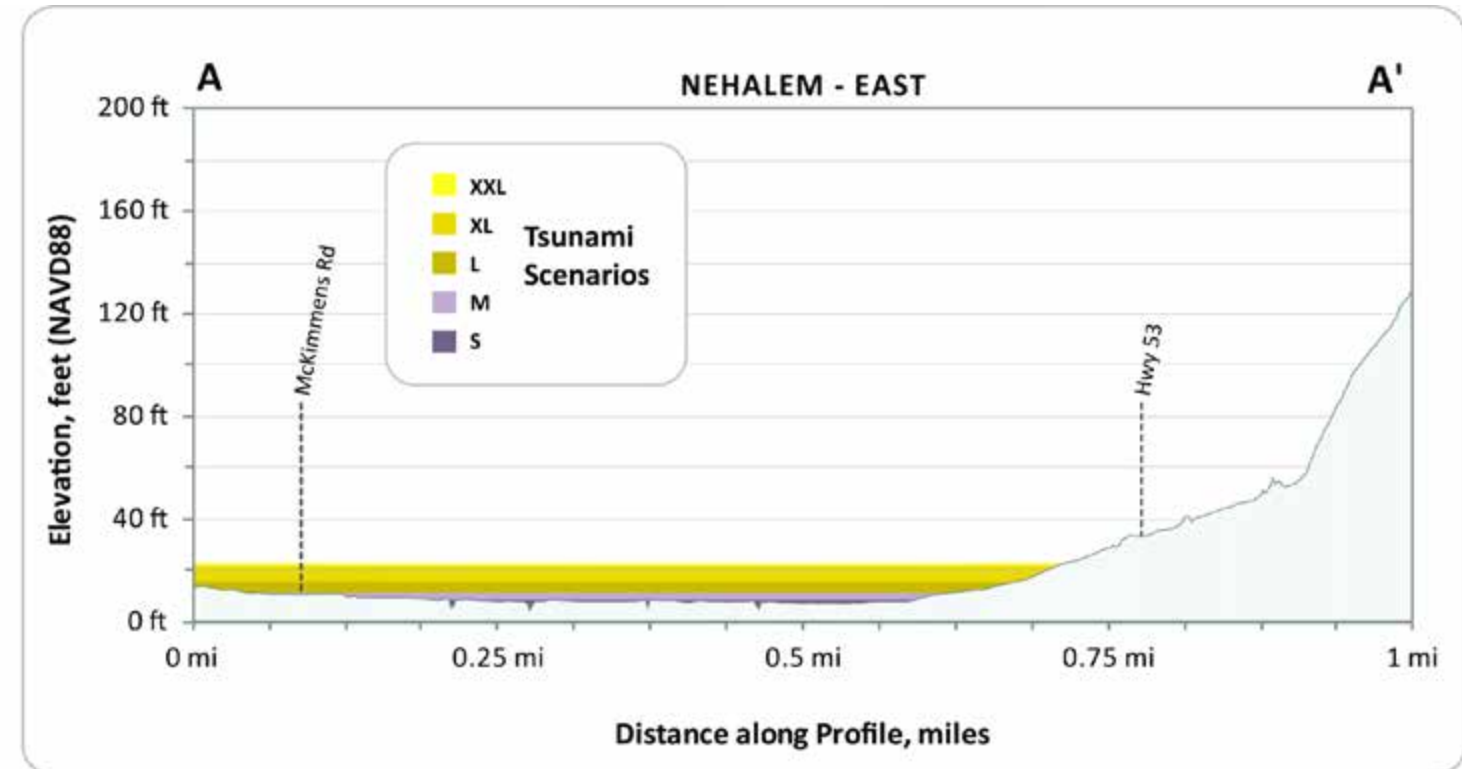
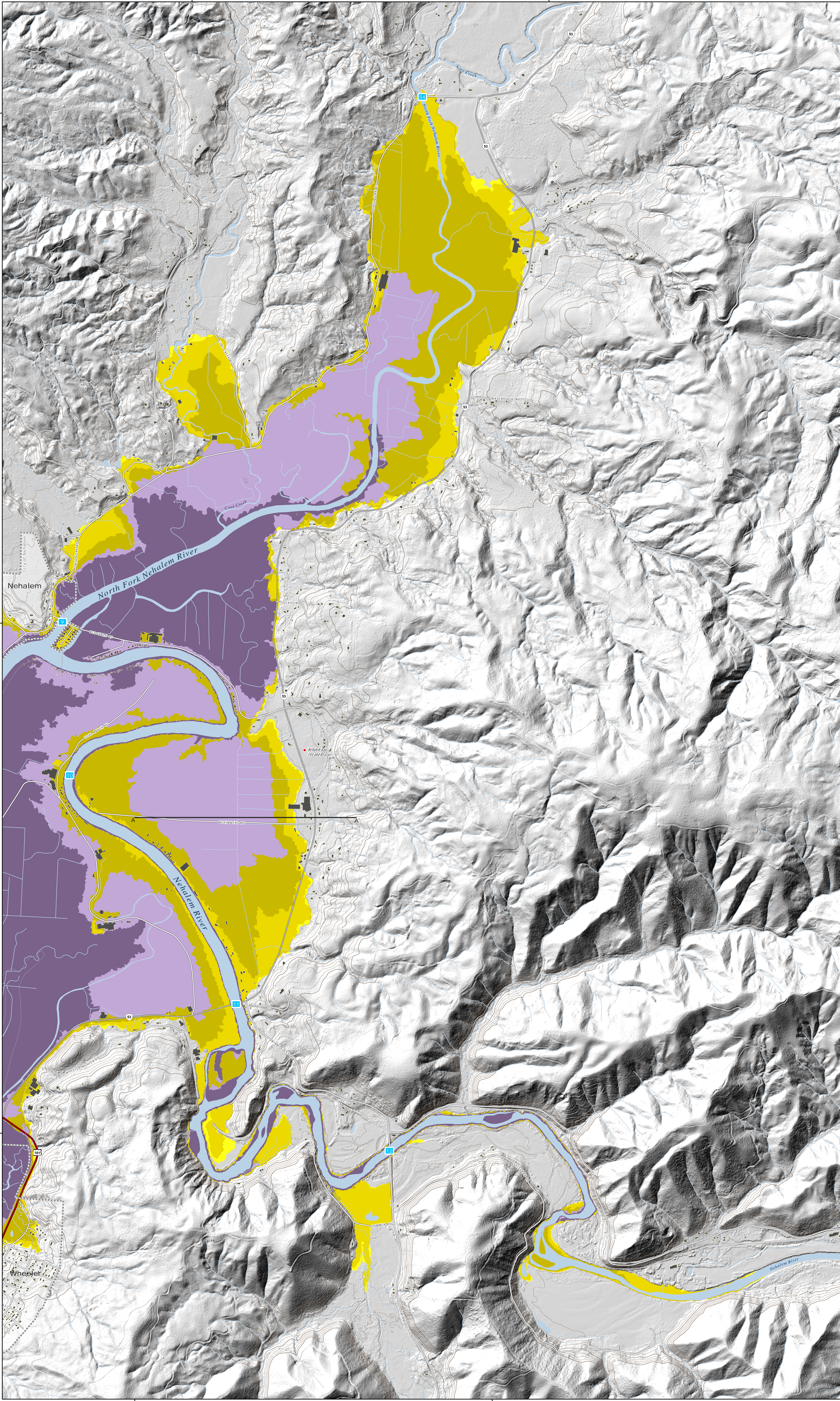


Figure 6: This profile depicts the expected maximum tsunami wave elevation for the five "T-shirt" size scenarios along line A-A'. The tsunami scenario is modeled to occur at high tide and to account for local subsidence or uplift of the ground surface.

Local Source (Cascadia Subduction Zone) Tsunami Inundation Map Nehalem East, Oregon

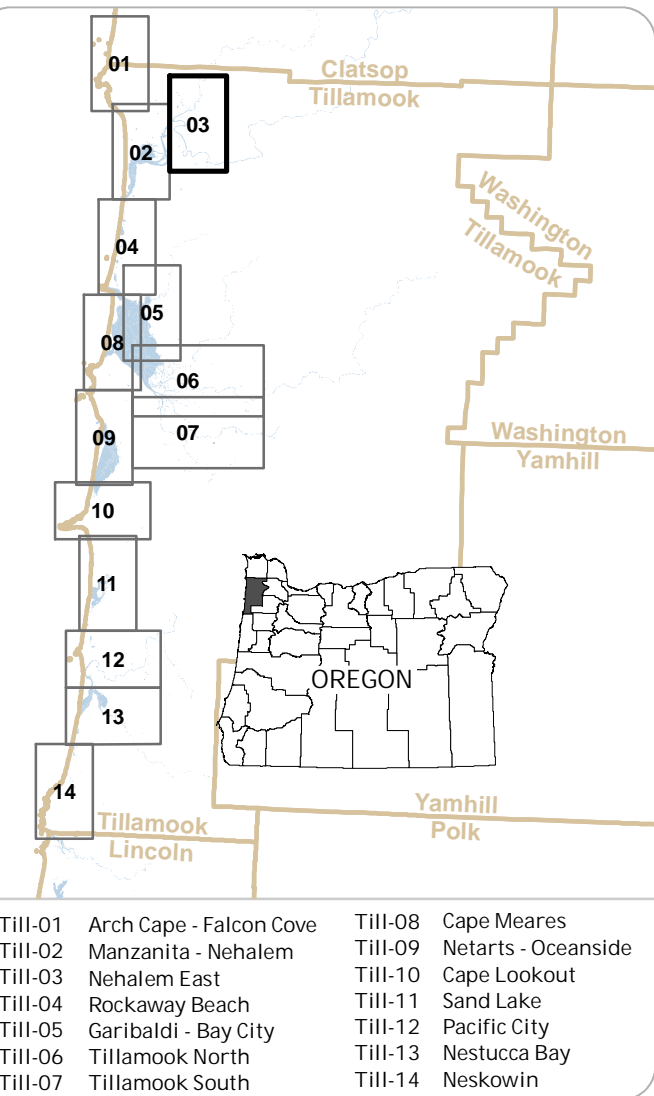
2012



Legend

Earthquake Size	Average Slip Range (ft)	Maximum Slip Range (ft)	Time to Accumulate Slip (yrs)	Earthquake Magnitude
XXL	59 to 72	118 to 144	1,200	-9.1
XL	56 to 72	115 to 144	1,050 to 1,200	-9.1
L	36 to 49	72 to 98	650 to 800	-9.0
M	23 to 30	46 to 62	425 to 525	-8.9
S	13 to 16	30 to 36	300	-8.7
XXL Wet/Dry Zone				
Urban Growth Boundary				
Building Footprint				
Simulated Gauge Station				
Profile Location				
Senate Bill 379 Line				
State Park				
Elevation Contour (25 ft intervals up to 200 ft)				
Fire Station				
Police Station				
School				
Hospital/Urgent Care Clinic				
U.S. Highway				
State Highway				
Improved Road				

Tsunami Inundation Map Index



Data References

Source Data:
This map is based on hydrodynamic tsunami modeling by Joseph Zhang, Oregon Health and Science University Portland, Oregon. Model data input were created by John T. English and George R. Priest, Department of Geology and Mineral Industries (DOGAMI), Portland, Oregon.
Hydrology data, contours, critical facilities, and building footprints were created by DOGAMI. Senate Bill 379 line data were redigitized by Rachel R. Lyles Smith and Susan G. Pickner, DOGAMI, in 2011. GIS files created in 2012.
Urban growth boundaries (2010) were provided by the Oregon Department of Land Conservation and Development (DLCD).
Transportation data (2011) were provided by Tillamook County.
Lidar data are from DOGAMI Lidar Data Quadrangle LDO 2011-45123-F-Fishhawk, LDO 2011-45123-B-Nehalem, LDO 2011-45123-G-Sagehen/Lake, LDO 2011-45123-G-Anderson, LDO 2011-45123-G-Anderson.
Coordinate System: Oregon Statewide Lambert Conformal Conic, Unit: International Feet, Horizontal Datum: NAD 1983, Vertical Datum: NAVD 1983. Graticule shown with geographic coordinates (Latitude/Longitude).

References:
2007 Working Group on California Earthquake Probabilities (WGCEP), 2008. The Uniform California Earthquake Rupture Forecast, Version 2 (UCERF 2). U.S. Geological Survey Open-File Report 2007-1437 and California Geological Survey Special Report 203. [http://pubs.usgs.gov/of/2007/1437/]
Priest, G.R., 1995. Explanation of mapping methods and use of the tsunami hazard map of the Oregon coast. Oregon Department of Geology and Mineral Industries Open-File Report O-95-47, 95 p.
Priest, G.R., Goldfinger, C., Wang, K., Witter, R.C., Zhang, Y., and Baptista, A.M., 2009. Tsunami hazard assessment of the northern Oregon coast: a multi-deterministic approach tested at Cannon Beach, Clatsop County, Oregon. Oregon Department of Geology and Mineral Industries Special Paper 41, 87 p.
Witter, R.C., Zhang, Y., Wang, K., Priest, G.R., Goldfinger, C., Sliemers, L.L., English, J.T., and Ferro, J.A., 2011. Simulating tsunami inundation at Bandon, Coos County, Oregon, using hypothetical Cascadia and Alaska earthquake scenarios. Oregon Department of Geology and Mineral Industries Special Paper 43, 57 p.

Software: Esri ArcGIS® 10.0, Microsoft® Excel®, and Adobe® Illustrator®
Funding: This map was funded under award #NA49HW54670014 by the National Oceanic and Atmospheric Administration (NOAA) through the National Tsunami Hazard Mitigation Program.
Map Data Creation/Development: Geospatial Information Systems Group, R. Priest, Laura L. Sliemers, Daniel E. Cox, Paul A. Ferro, Susan G. Pickner, Rachel R. Lyles Smith, George R. Priest, and John T. English.
Map Production: Cartography: Katerina L.B. Hughes, Susan G. Pickner, Taylor L. Winters.
River: Don W.T. Lewis, Rachel R. Lyles Smith, Application Developer: A. Schaeffer.
Map Date: 07/12/2012

