



STATE OF OREGON
DEPARTMENT OF GEOLOGY AND
MINERAL INDUSTRIES
RUARRI J. DAY-STIRRAT, STATE GEOLOGIST
www.oregongeology.org

Site Amplification Class Map of Cottage Grove, Oregon

PLATE 6

NEHRP Class

- B
- C
- D
- E, F

Site Amplification is the degree to which soil types attenuate (weaken) or amplify (strengthen) seismic waves produced from an earthquake. The National Earthquake Hazards Reduc-tion Program (NEHRP) classifies these geologic units into soft rock (B), dense soil or soft rock (C), stiff soil (D), and soft clay or soil (E, F). NEHRPsoils can significantly affect the level of shaking and amount of damage that occurs at a specifically location during an earthquake

Map Elements

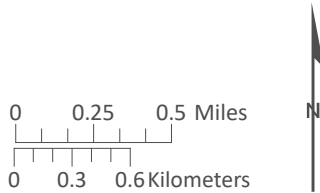
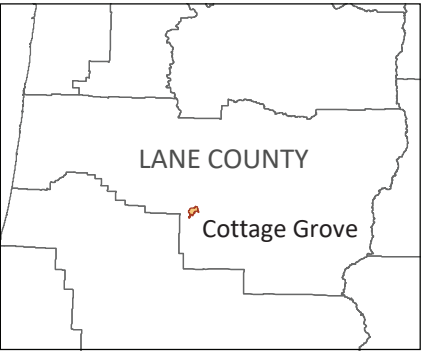
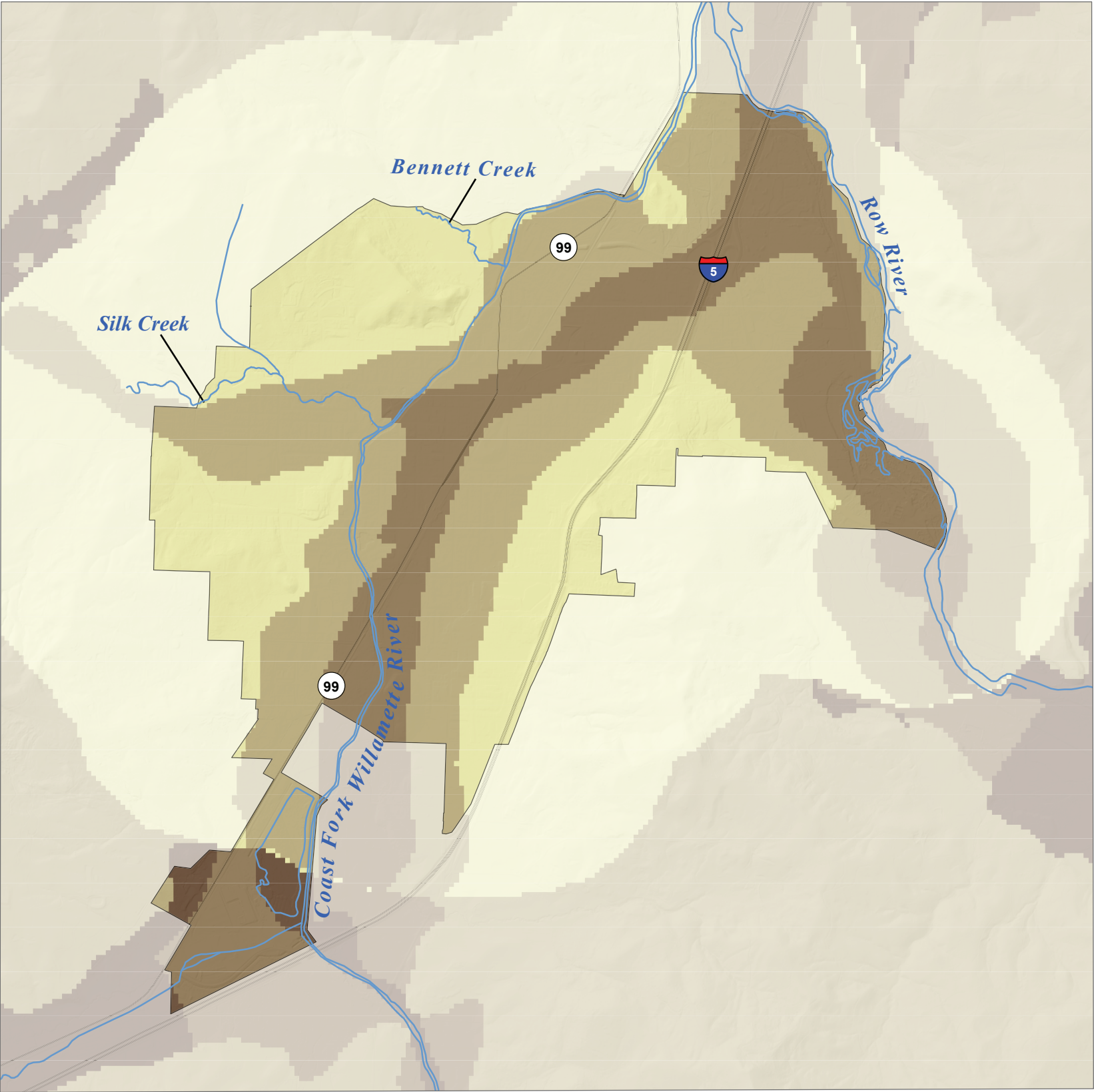
- Cottage Grove Urban Growth
- Boundary Streams
- Major Roads

Community	Earthquake Risk					
	Potentially Displaced Residents	% Potentially Displaced Residents	Exposed Buildings	Exposed Critical Facilites	Building Value Exposed (\$)	Exposure Ratio
Cottage Grove	37	0.4%	318	8	111,599,000	7.1%

Data Sources:
Soil amplification: Oregon Seismic Hazard Database (2021)
Roads: Oregon Department of Transportation Signed Routes (2013)
Place names: U.S. Geological Survey Geographic Names Information System (2015)
City limits: Oregon Department of Transportation (2014)
Basemap: Oregon Lidar Consortium (2017)
Hydrography: U.S. Geological Survey National Hydrography Dataset (2017)

Projection: NAD 1983 HARN Oregon Statewide Lambert
Software: Esri ArcMap 10, Adobe Illustrator CC

Cartography by: Matt C. Williams, 2022



Disclaimer: This product is for informational purposes and may not have been prepared for or be suitable for legal, engineering, or surveying purposes. Users of this information should review or consult the primary data and information sources to ascertain the usability of the information. This publication cannot substitute for site-specific investigations by qualified practitioners. Site-specific data may give results that differ from the results shown in the publication. See the accompanying text report for more details on the limitations of the methods and data used to prepare this publication.

This map is an overview map and not intended to provide details at the community scale. The GIS data that are published with the Cottage Grove Multi-Natural Hazard Risk Assessment can be used to inform regarding queries at the community scale.