

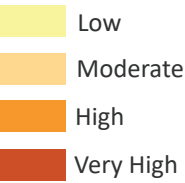


STATE OF OREGON  
DEPARTMENT OF GEOLOGY AND  
MINERAL INDUSTRIES  
RUARRI J. DAY-STIRRAT, STATE GEOLOGIST  
[www.oregongeology.org](http://www.oregongeology.org)

# Landslide Susceptibility Map of Cottage Grove, Oregon

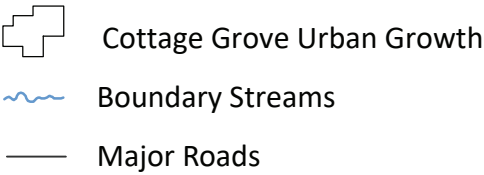
PLATE 8

## Landslide Susceptibility



Landslide susceptibility is categorized as Low, Moderate, High, and Very High which describes the general level of susceptibility to landslide hazard. The dataset is an aggregation of three primary sources: landslide inventory (SLIDO), generalized geology, and slope.

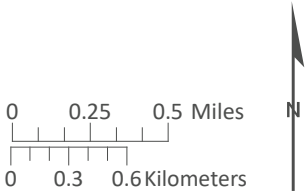
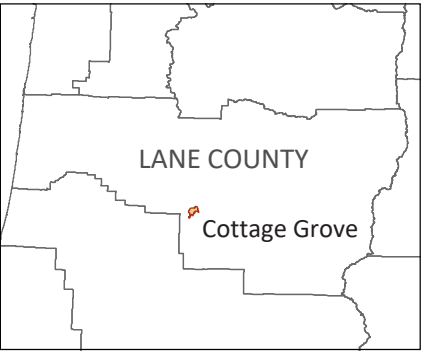
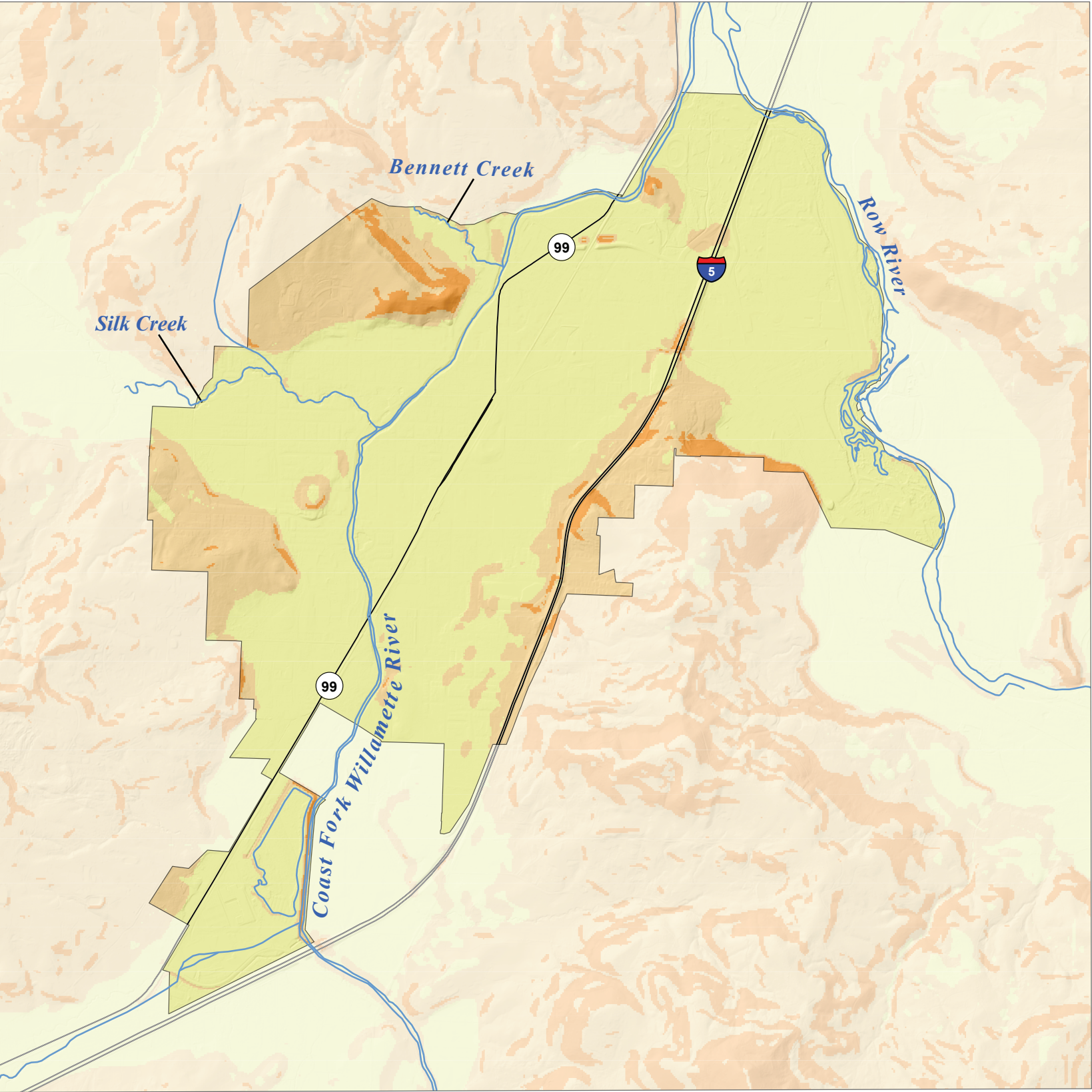
## Map Elements



Community	Landslide Risk					
	Potentially Displaced Residents	% Potentially Displaced Residents	Exposed Buildings	Exposed Critical Facilities	Building Value Exposed (\$)	Exposure Ratio
Cottage Grove	79	0.8%	44	0	12,103,000	0.8%

**Data Sources:**  
Landslide susceptibility: Oregon Department of Geology, Burns and others (2016)  
Roads: Oregon Department of Transportation Signed Routes (2013)  
Place names: U.S. Geological Survey Geographic Names Information System (2015)  
City limits: Oregon Department of Transportation (2014)  
Basemap: Oregon Lidar Consortium (2017)  
Hydrography: U.S. Geological Survey National Hydrography Dataset (2017)

Projection: NAD 1983 HARN Oregon Statewide Lambert  
Software: Esri ArcMap 10, Adobe Illustrator CC  
Cartography by: Matt C. Williams, 2022



Disclaimer: This product is for informational purposes and may not have been prepared for or be suitable for legal, engineering, or surveying purposes. Users of this information should review or consult the primary data and information sources to ascertain the usability of the information. This publication cannot substitute for site-specific investigations by qualified practitioners. Site-specific data may give results that differ from the results shown in the publication. See the accompanying text report for more details on the limitations of the methods and data used to prepare this publication.

This map is an overview map and not intended to provide details at the community scale. The GIS data that is published with the Cottage Grove Natural Hazard Risk Assessment can be used to inform regarding queries at the community scale.