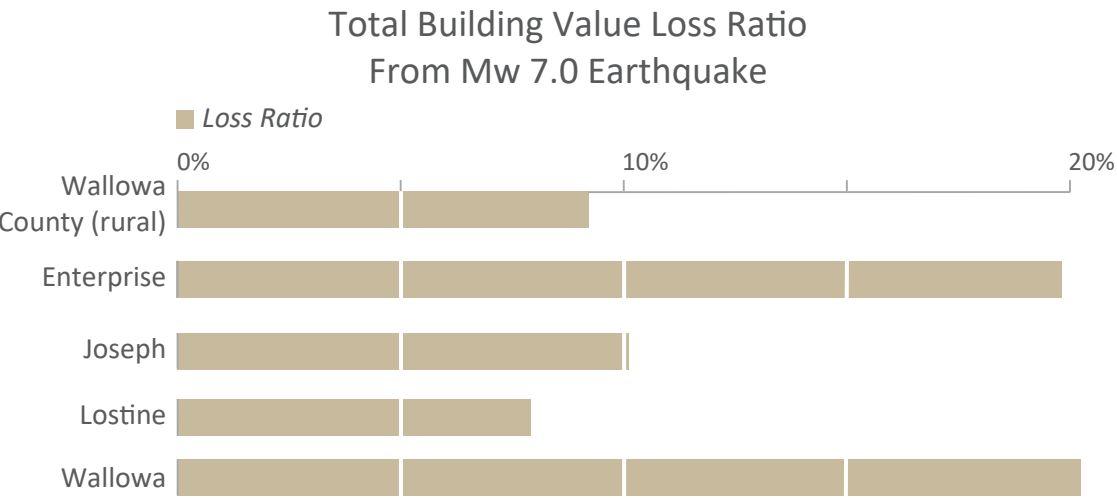




2,500-year Probabilistic Earthquake Shaking Map of Wallowa County, Oregon

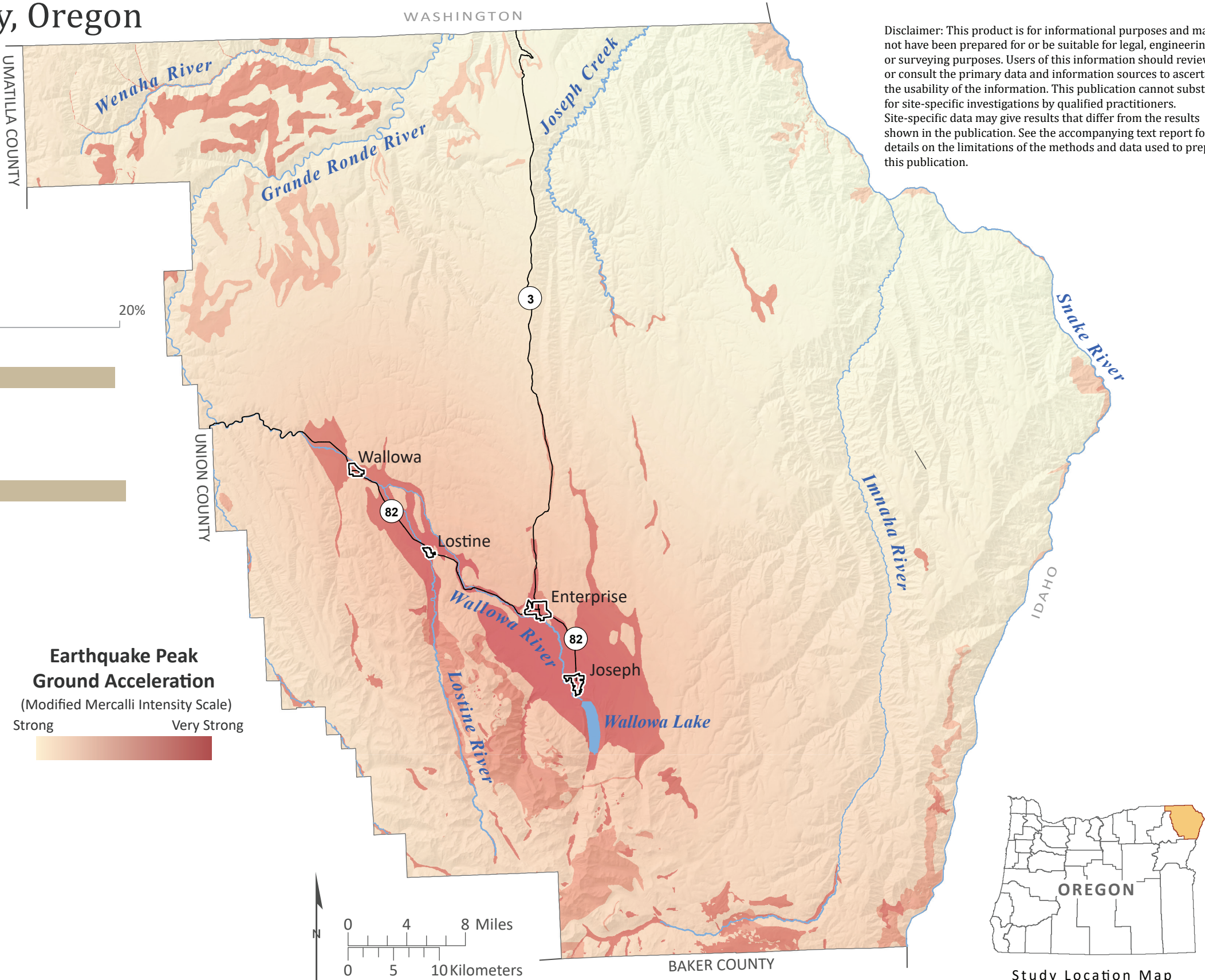
Peak Ground Acceleration (PGA) is the maximum acceleration in a given location or rather how hard the ground is shaking during an earthquake. It is one measurement of ground motion, which is closely associated with the level of damage that occurs from an earthquake.



This map is an overview map and not intended to provide details at the community scale. The GIS data that is published with the Wallowa County Natural Hazard Risk Assessment can be used to inform regarding queries at the community scale.

Data Sources:
Earthquake peak ground acceleration: Oregon Seismic Hazard Database (2021)
Roads: Oregon Department of Transportation Signed Routes (2013)
Place names: U.S. Geological Survey Geographic Names Information System (2015)
City limits: Oregon Department of Transportation (2014)
Basemap: Oregon Lidar Consortium (2017)
Hydrography: U.S. Geological Survey National Hydrography Dataset (2017)

Projection: NAD 1983 HARN Oregon Statewide Lambert
Software: Esri® ArcMap 10, Adobe® Illustrator CC
Cartography by: Matt C. Williams, 2021



Disclaimer: This product is for informational purposes and may not have been prepared for or be suitable for legal, engineering, or surveying purposes. Users of this information should review or consult the primary data and information sources to ascertain the usability of the information. This publication cannot substitute for site-specific investigations by qualified practitioners. Site-specific data may give results that differ from the results shown in the publication. See the accompanying text report for more details on the limitations of the methods and data used to prepare this publication.