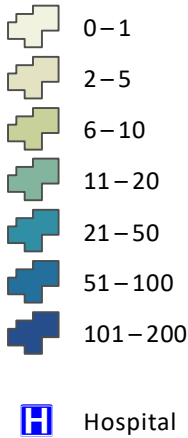
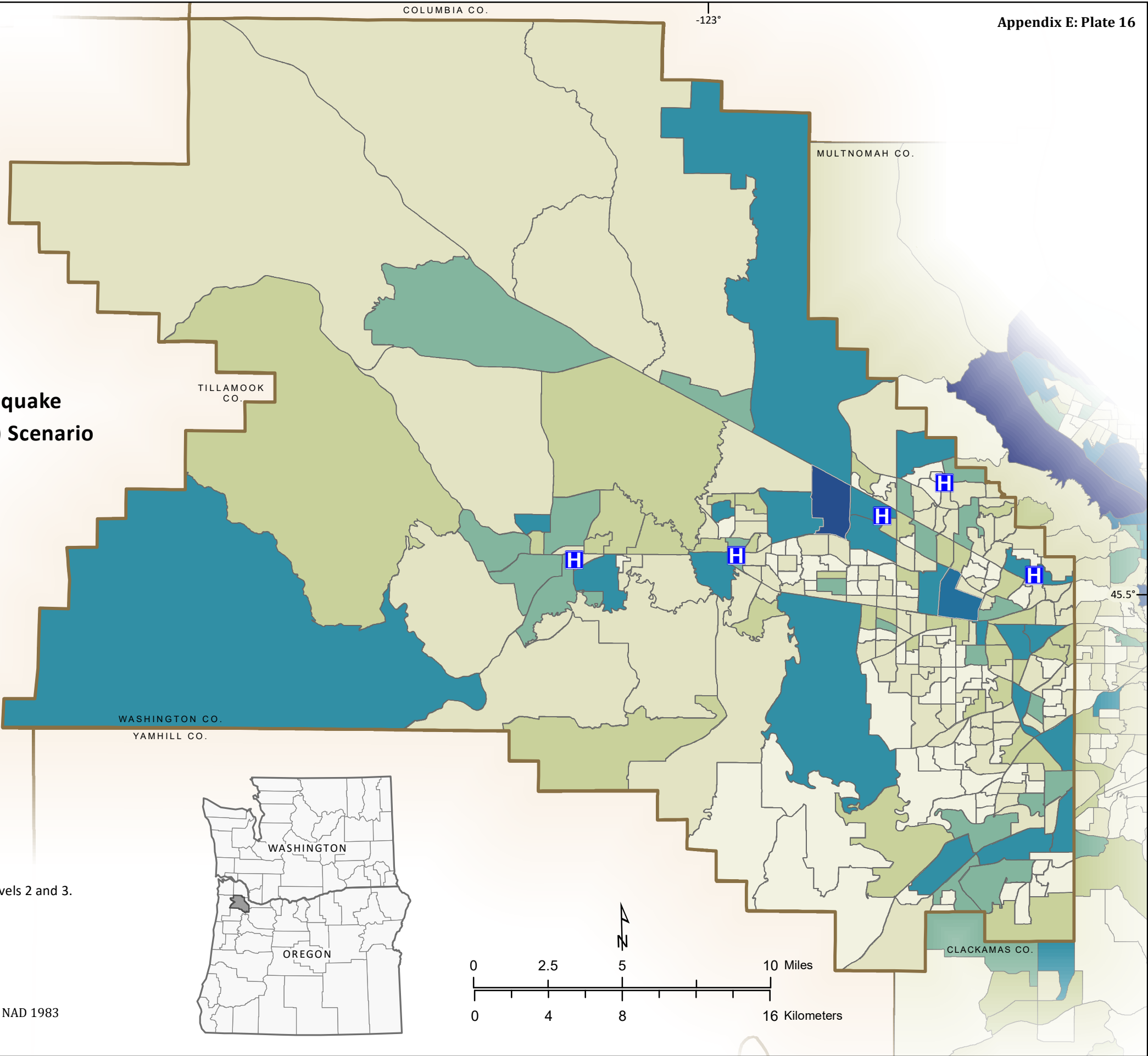


**Injuries Requiring Hospitalization**  
**Washington County, Oregon**  
**Cascadia Subduction Zone Magnitude 9.0 Earthquake**  
**Wet (Saturated) Soil Conditions, Daytime ("2 PM") Scenario**

Injuries Requiring Hospitalization  
per Neighborhood Unit



Hospitals outside of Washington County not shown.  
"Injuries requiring hospitalization" combines Hazus casualty levels 2 and 3.



**Source Data:**  
Neighborhood Units: Adapted from U.S. Census Bureau 2010 Census Block Groups  
Hospitals: Metro Regional Land Information System (RLIS), May 2017  
**Projection:** Lambert Conformal Conic, EPSG 2913. Unit: International Feet, Horizontal Datum: NAD 1983  
**Map Author:** John M. Bauer  
February 12, 2018