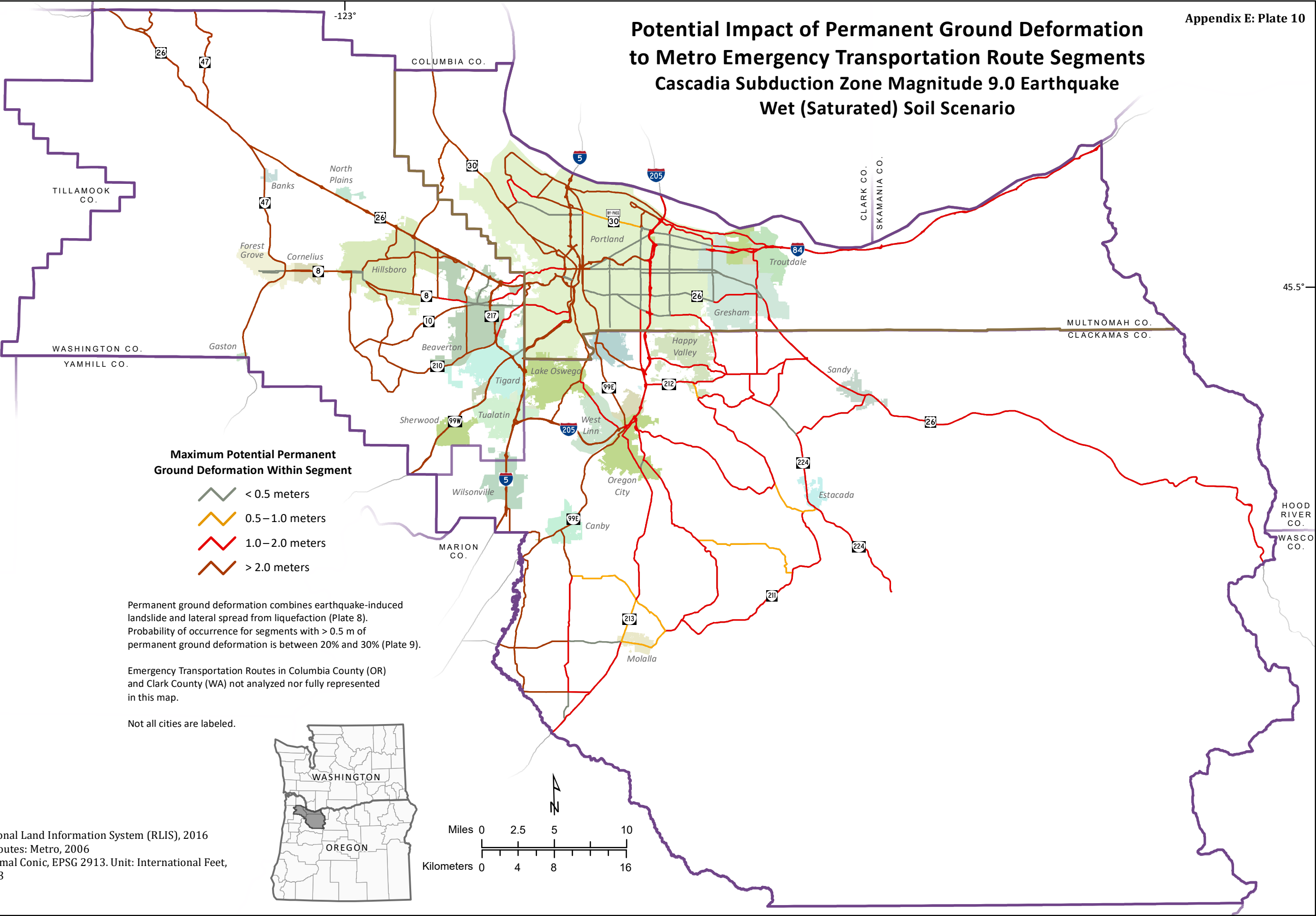


Potential Impact of Permanent Ground Deformation to Metro Emergency Transportation Route Segments Cascadia Subduction Zone Magnitude 9.0 Earthquake Wet (Saturated) Soil Scenario



Maximum Potential Permanent Ground Deformation Within Segment

- < 0.5 meters
- 0.5–1.0 meters
- 1.0–2.0 meters
- > 2.0 meters

Permanent ground deformation combines earthquake-induced landslide and lateral spread from liquefaction (Plate 8). Probability of occurrence for segments with > 0.5 m of permanent ground deformation is between 20% and 30% (Plate 9).

Emergency Transportation Routes in Columbia County (OR) and Clark County (WA) not analyzed nor fully represented in this map.

Not all cities are labeled.

Source Data:
City boundaries: Metro Regional Land Information System (RLIS), 2016
Emergency Transportation Routes: Metro, 2006
Projection: Lambert Conformal Conic, EPSG 2913. Unit: International Feet, Horizontal Datum: NAD 1983
Map Author: John M. Bauer
September 1, 2017

