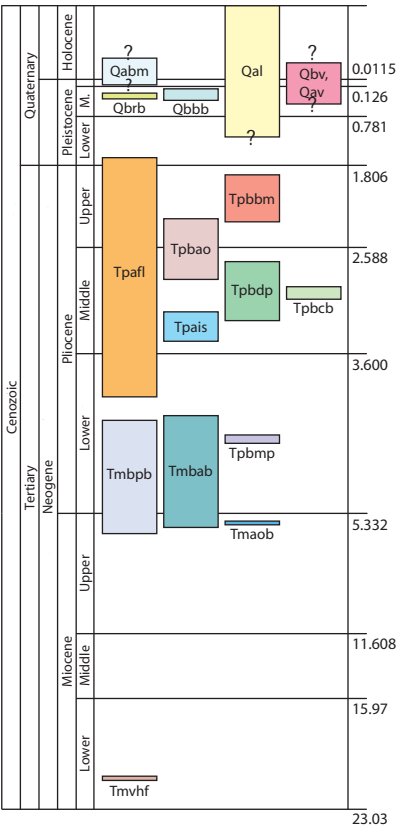


TIME ROCK CHART



MAP UNITS

(A full description of the geologic units
is found in the accompanying text)

Surficial Units

Qal Alluvium
(Pleistocene to Holocene)

Volcanic Units

- Qbv, Qav** Basaltic/ Basaltic Andesite/
Andesite Vent Deposits
(M. Pleistocene to Holocene)
- Qbm** Andesite of Brown Mountain
(Upper Pleistocene to Holocene)
- Qbbb** Basalt of Burton Butte
(Middle Pleistocene)
- Qbrb** Basalt of Robinson Butte
(Middle Pleistocene)
- Tpbbm** Basalt of Brush Mountain
(Upper Pliocene)
- Tpbao** Basaltic Andesite of Old Baldy
(Middle to Upper Pliocene)
- Tpbcb** Basalt of Cox Butte
(Middle Pliocene)
- Tpbdb** Basalt of Daley Prairie
(Middle Pliocene)
- Tpais** Andesite of Ichabod Spring
(Middle Pliocene)
- Tpafl** Andesite of Fish Lake
(Lo. Pliocene to Lo. Pleistocene)
- Tpbmp** Basalt of Moon Prairie
(Lower Pliocene)
- Tmaob** Andesite of Old Baldy East
(Upper Miocene)
- Tmbab** Basaltic Andesite of Beaver
Dam Creek
(Up. Miocene to Lower Pliocene)
- Tmbpb** Basalt of Pole Bridge Creek
(Up. Miocene to Lower Pliocene)
- Tmvhf** Heppsie Formation
(Lower Miocene)

SCALE: 1:52,000

GEOLOGIC MAP SYMBOLS

— Contact -- Approximately located

*# Sample location and map number for specimens with available
age dates and chemical analyses -- Consult Table 1 in the attached text.

Sample location and map number for specimens with available chemical
analyses -- Consult Table 1 in the attached text.

Geology by:
Stanley A. Mertzman (Franklin and Marshall College)
Richard W. Hazlett (Pomona College)
Stephen G. Weaver (Colorado College)
Stephanie Brackin (formerly at Beloit College)
Heather Cruz (formerly at Amherst College)
Amy Humm (formerly at Amherst College)
Amy Lunt (formerly at Franklin and Marshall College)
Heather Petcovic (formerly at Smith College)
Ben Schiffer (formerly at Whitman College)
Rachel Sours-Page (formerly at Pomona College)
Peter Taylor (formerly at Williams College)
Andrew Tittler (formerly at Williams College)
Jonathon Zook (formerly at Colorado College)

Field Work: 1984, 1991, 1994, 1999, 2000, 2002, 2004

NOTES REGARDING THE MAP:

The above map was created in and exported from MapInfo Professional® version 7.0 in the following projection: Universal Transverse Mercator (NAD 27 for US): UTM Zone 10 (NAD 27 for US). The U.S. Geological Survey 7.5 Minute Brown Mountain quadrangle, the colored geologic units, the geologic unit boundaries, and the sample location symbols were exported from MapInfo and have since been kept in the same orientation. The exported map image has been uniformly resized using Adobe® Illustrator® CS3 to create a 1:52,000 scale. The colors of the exported map were adjusted using Adobe® Photoshop® CS3 to be consistent with USGS CMYK color standards. The map numbers and geologic unit labels were added to the map in Adobe® Illustrator® CS3. A final .pdf version of the map was created using Adobe® Illustrator® CS3.