

Cover Story: Drilling equipment owned by Marvin Lewis, Salem, Oregon. Lewis re-tested a hole which was originally drilled by Reserve Oil & Gas Co. in 1960 near Holmes Gap. The hole proved to be non-commercial.

STATE OF OREGON
DEPARTMENT OF GEOLOGY AND MINERAL INDUSTRIES
1069 STATE OFFICE BUILDING
PORTLAND, OREGON 97201

Miscellaneous Paper 6

OIL AND GAS EXPLORATION IN OREGON

Compiled by R.E. Stewart
1954

Revised by V.C. Newton Jr.
1965



STATE GOVERNING BOARD
Frank C. McColloch, *Chairman* Portland
Harold Banta Baker
Fayette I. Bristol Grants Pass

Hollis M. Dole
STATE GEOLOGIST

CONTENTS

FOREWORD.....	3
HISTORY OF EXPLORATION.....	5
SEDIMENTARY BASINS.....	7
HISTORY OF OIL AND GAS LAWS.....	8
EXPLORATION STATISTICS.....	9
COMMENTS ON DATA LISTED IN THIS PUBLICATION.....	14
WELL DATA.....	15
TABLE 1...GAS ANALYSES.....	33
TABLE 2...WATER ANALYSES.....	36

ILLUSTRATIONS

HISTORIC WELL NEAR SNAKE RIVER.....	4
PHOTOGRAPH OF OLD TRUCK MOUNTED RIG.....	6
INDEX MAP OF SEDIMENTARY BASINS.....	7
DRILLING FOOTAGE GRAPHS.....	10
HEAVY DRILLING EQUIPMENT.....	13

FOREWORD

Oregon has undergone two periods of oil exploration, from 1900 to 1940, and from 1940 to 1962. The first period was characterized by small, speculative ventures, most of which based drilling locations on little, if any, geologic study. At the close of World War II, large oil firms began extensive geologic studies in the state and many of the companies drilled deep test holes in the course of their work between 1940 and 1962.

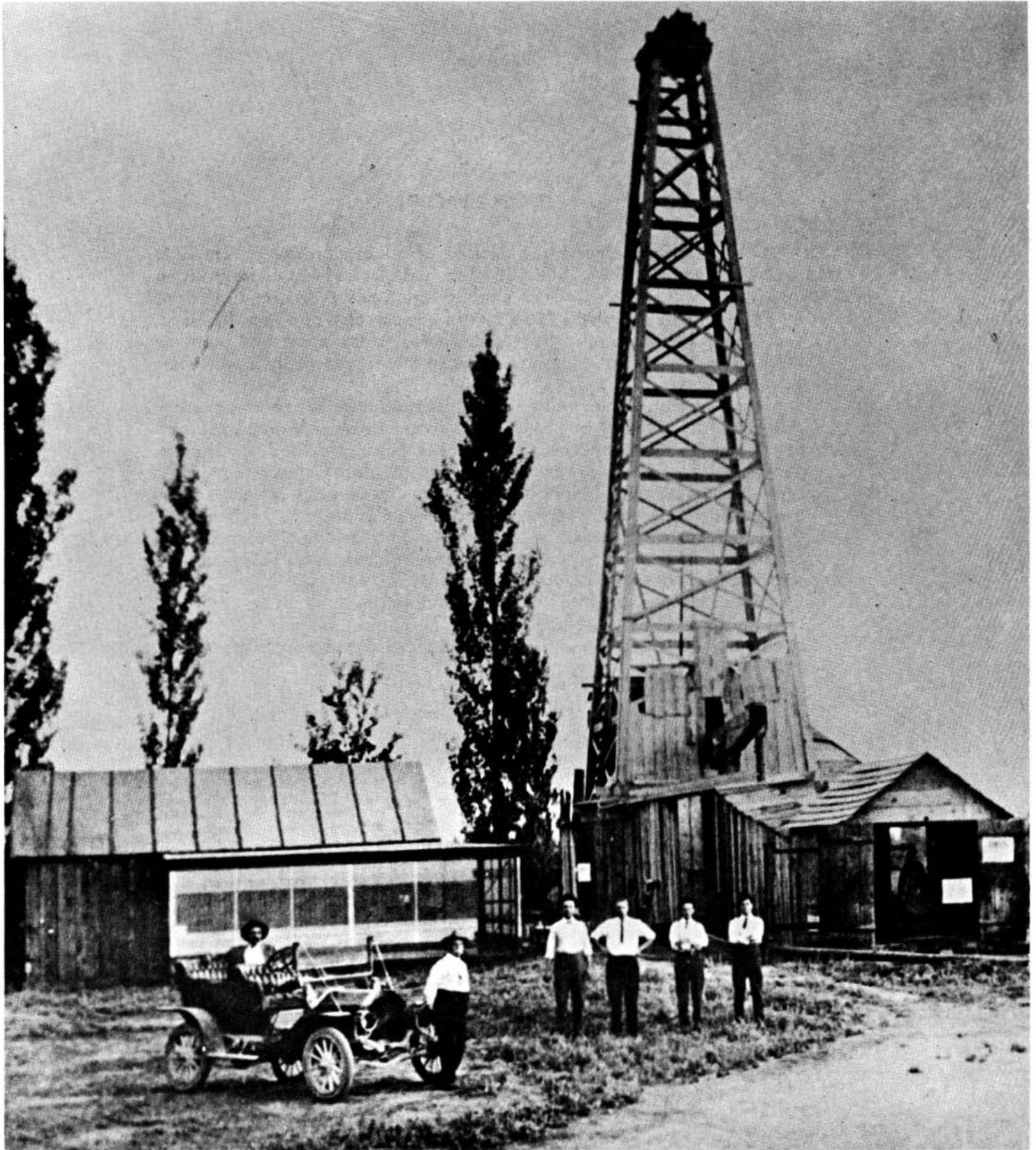
Past exploration has proved to be discouraging, since no commercial amounts of oil or gas have been found in more than 60 years of prospecting. Nevertheless, the studies have provided invaluable geologic information which can be used to plan future work. At present a tremendous effort is being made to develop oil and gas on the continental shelf bordering Oregon and Washington.

It is intended that this report serve as a history of oil and gas exploration in Oregon and that it may also be used as an index to records stored in the files of this Department.

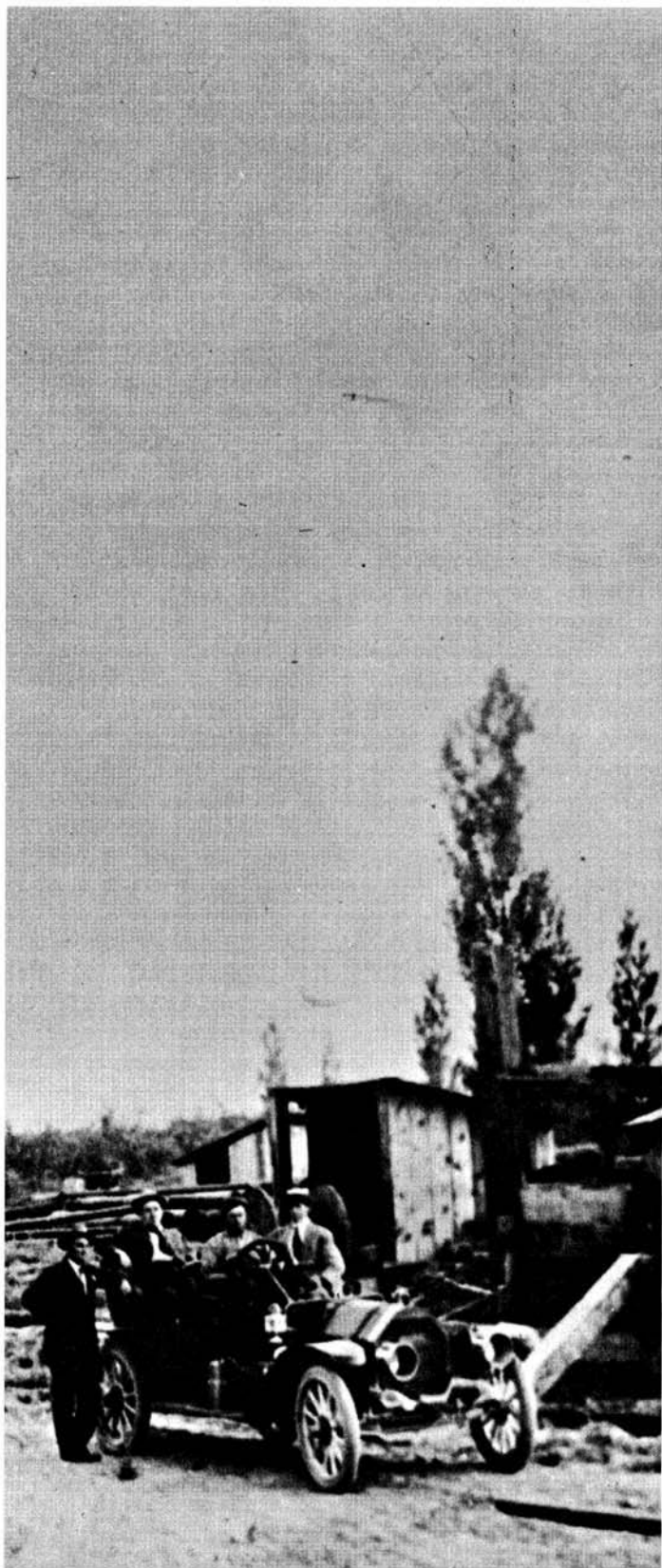
Miscellaneous Paper 6 was compiled in 1954 by R. E. Stewart, then geologist with the Department. The current revised edition has been compiled by V. C. Newton, Jr., the Department's petroleum engineer.

Hollis M. Dole
State Geologist

November 1, 1965



Historic well drilled near Weiser, Idaho on the Oregon side of the Snake River in 1907.
(Photograph courtesy of the Oregon Historical Society)



HISTORY OF EXPLORATION

A. C. Churchill & Associates drilled two wells near the town of Newberg in western Oregon in 1902. This work is the first recorded oil venture in the state. All that the group found in its drilling was a small flow of nonflammable gas. Since the Churchill ventures, 170 oil and gas tests have been drilled in Oregon. None of the drillings encountered commercial amounts of oil or gas.

Several minor shows of oil and numerous gas occurrences have been reported in exploration records. Natural gas from shallow wells has been utilized for domestic purposes in a few instances. It was undoubtedly such use of gas that resulted in the U.S. Geological Survey's listing production in 1907, 1908, and 1909 (Mineral Resources of the U. S.) for Oregon.

Forty holes were drilled in Oregon between 1902 and 1920, mainly by wildcatting groups. The Ontario Cooperative Oil & Gas Co. well near the town of Ontario in eastern Oregon was one of the most significant tests during this period. The well "blew-out" when a gas sand was encountered at 2,200 feet. Gas reportedly blew mud and sand over the derrick crown (Washburne, 1909). The large flow was short lived, and only a small amount of gas remained after a few days.

Forty-five holes were put down between 1920 and 1940. Western Oregon received the greatest attention, as it had in the previous 18-year period. The geology of the western region is correspondingly the most favorable for oil prospecting. Two small gas wells were reported to have been obtained by the Coast Oil Co. near Coquille in Coos County. The firm laid a pipe line to Coquille, but for some reason natural gas was never supplied to the town (McCusker, 1938). A number of holes were drilled in Klamath, Lake, Harney, and Wheeler Counties in this period, but only minor shows of gas were found.

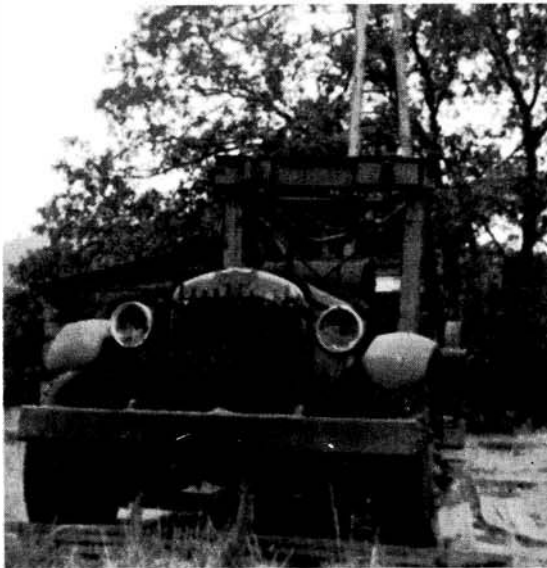
Large oil companies began exploring in Oregon at the close of World War II, and they concentrated their efforts on the inland basins until 1962. After that time interest was focused on the continental shelf bordering the state. Geologic information obtained in drilling thus far has been largely stratigraphic, since not more than one hole has been drilled on any structure by the major firms exploring in the state.

Several interesting occurrences of petroleum were noted in the exploration between 1940 and



1965. Oil was obtained in cores from the Community Oil & Gas Co. "Scott 1" and the Uranium Oil & Gas Co. "Ziedrich 1" near Roseburg, but the formations were too "tight" to yield commercial amounts of oil or gas. In 1958 Sunray Mid-Continent Oil Co., operator with Standard Oil of California, drilled a well southeast of Prineville in which gas was found in Cretaceous marine sediments. Since the gas occurred in a section which was predominantly shale, no tests were made. Linn County Oil Development Co. "Barr 1," drilled near Lebanon in 1958, reported good shows of oil on the ditch. Attempts to complete the well failed, however; only a small flow of gas was recovered in tests. In 1962 Reserve Oil & Gas Co. "Esmond 1," which was drilled near the town of Lebanon, encountered an extremely high-pressure gas zone (pressure gradient estimated .70 psi per foot). The well flowed very gassy salt water at a gauged rate of 2,000 B/D. The zone was found in Eocene volcanics interbedded with marine sediments. Gulf Oil Corp. encountered a high-pressure zone in formation of the same age while drilling near Halsey in 1964.

By the end of 1963 most of the large oil companies had terminated exploration onshore in Oregon. The industry apparently was convinced that the best hopes for production lay on the continental shelf lands bordering the state. Early seismic studies offshore in Oregon indicated there was less volcanic rock in the shelf region than onshore and that a thick section of Tertiary marine sediments, ranging in age from Pliocene through Eocene, could be found off the coast of Oregon. Seismic work also revealed that large anticlinal structures exist offshore.



Bottom left: Old truck-mounted rig used to drill the Riddle Gas & Oil Producers, Ltd. "Wollenberg 1."

Left above: Harney Valley Oil & Gas Co. "Fay 1" drilled in 1937 a few miles southeast of the town of Burns. The old wood derrick was still in good repair in 1965.

SEDIMENTARY BASINS

The western Tertiary marine basin in Oregon extends over an area of approximately 12,000 square miles. It is bordered on the east by the Cascade Mountains and on the south by the Klamath Mountains. The Cascades are of volcanic origin, and the Klamaths are an uplifted region of Mesozoic metasediments and volcanics. Eocene sediments predominate in the western Tertiary marine basin, but thick sections of younger Tertiary rocks can be found in northwestern Oregon and on a large portion of the continental shelf.

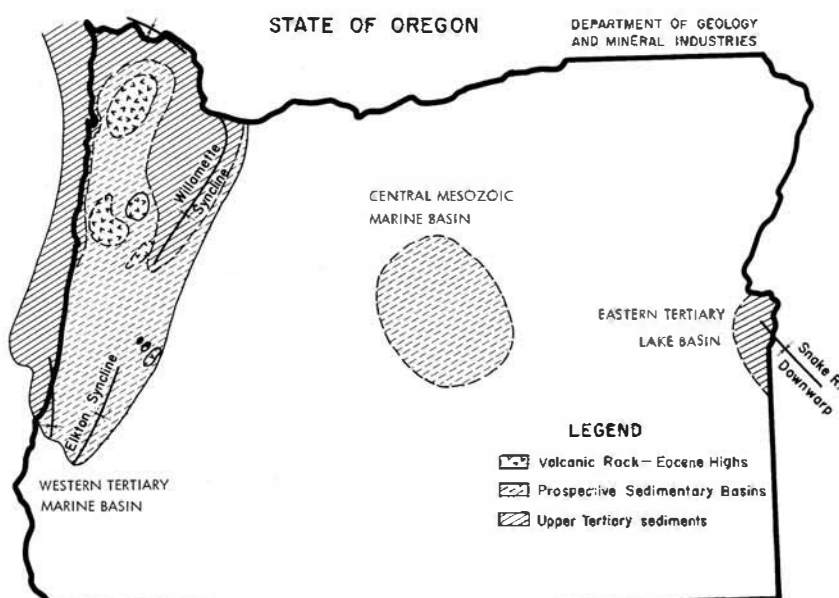
In central Oregon an area of 6,000 square miles is believed to be underlain by unmetamorphosed Mesozoic marine sediments which offer prospect of production. As much as 30,000 feet of marine strata have been measured in this region. A covering of Tertiary volcanic rocks has thusfar deterred exploration of the central Mesozoic basin. Minor shows of asphalt, oil, and gas have been reported from these Mesozoic rocks.

During Miocene-Pliocene time several large

intermontane basins formed in eastern Oregon. The most prominent of these are: the western Snake River basin, Klamath Basin, Harney Basin, and the Goose Lake Basin. Sediments in the Snake River downwarp are believed to be nearly 10,000 feet thick and sediments in the Goose Lake Basin at least 20,000 feet thick. Humble Oil & Refining Co. tested the sediments in Goose Lake Basin with two deep wells and found them to be mainly interbedded volcanic and lacustrine sediments with intercalated lavas.

Many occurrences of gas have been found in the western Snake River basin, and at the moment this area appears to be the most attractive of the nonmarine prospects in Oregon.

The extremely deep Goose Lake Basin offers a considerable volume of rock to be explored. One good gas show was found at the northwest end of Goose Lake in a well drilled by the Lakeview Oil Co. in 1950. Shows of gas were also encountered at 7,500 feet in the Humble "Leavitt 1," but the zone was not tested.



Geologic data obtained by deep drilling in Oregon over the past 15 years indicates that certain areas of the state may still yield commercial quantities of oil and gas. The prospects have been limited to a much smaller portion of the state than was under consideration prior to 1950. Outlines of favorable basin areas are shown on the accompanying map. Synclinal axes are shown as they indicate deep portions of the sedimentary basins.

HISTORY OF OIL AND GAS LAWS

Chapter 185, Oregon Laws, 1923

This was the first law in Oregon designed to regulate oil and gas exploration. Prevention of waste was made a part of the statute, and operators were required to install an adequate amount of casing to prevent interchange of formation fluids. Restrictions were imposed upon disposal of salt water. The county governments were to provide for inspections and were given the responsibility for collection of drilling records.

Abandonment plugging was required, but dirt and rock fill was allowed in plugging. Enforcement of this statute was poorly administered, probably because the legislature failed to provide state funds for inspections.

Chapter 365, Oregon Laws, 1949

This statute contained all the sections of the earlier law, but gave the responsibility for administration of the law to the Department of Geology and Mineral Industries. The legislature also provided money for inspections. Records of drillings were required to be filed with the Department and were to be held confidential for a two-year period.

Chapter 667, Oregon Laws, 1953

Chapter 667 outlined a comprehensive act giving definitions and further defining waste. Procedure for enforcement of the oil and gas statute was established and authority given to the Governing Board of the Department of Geology and Mineral Industries to make rules and regulations for the conservation of oil and natural gas. Regulations governing exploration and development operations were incorporated into the law. Provision was made for requiring performance bonds to insure proper plugging.

Chapter 619, Oregon Laws, 1961

This law provides for leasing of Oregon's tide and submerged lands for oil and gas exploration. Exploration permits are authorized and a system for competitive bidding for leases has been set up. Offshore land is to be leased in 3- by 6-mile parcels.

Chapter 671, Oregon Laws, 1961

Compulsory unitization can be ordered by the Governing Board of the Department of Geology and Mineral Industries with the consent of 75 percent of the royalty owners.

Administrative Order No. Geology and Mineral Industries 1

Administrative Order No. Geology and Mineral Industries 1 was placed on file January 27, 1954, by the Governing Board of the Department of Geology and Mineral Industries. It established rules and regulations for exploration and development as authorized under Chapter 667. (Oregon Administrative Rules Chapter 632, Sections 10-002 through 10-200.)

Administrative Order No. Geology and Mineral Industries 2

At a public hearing held June 6, 1955, at the State Office Building in Portland, Rules IV, V, VI, and IX, promulgated under Administrative Order No. Geology and Mineral Industries 1, were amended. Order No. 2 was made primarily to increase the amount of performance bond from \$2,000 to \$4,000.

Administrative Order No. Geology and Mineral Industries 3

The Governing Board of the Department of Geology and Mineral Industries issued Order No. 3 on March 19, 1956, after holding a public hearing at the State Office Building in Portland. This order amended Rule L of rules and regulations promulgated under Order No. 1. Rule L outlines abandonment procedures.

EXPLORATION STATISTICS

Statistics are included here to designate the areas of the state receiving the most attention as oil and gas prospects in the past. The data also indicate the quality of the exploration studies and relates depth drilled to the proportion of basin sediments that have been prospected. Estimated expenditures suggest the value that industry has placed on Oregon's petroleum prospects.

Data on offshore exploration and lease sales are covered for their historic value. A list of companies which participated in the offshore work is included and mention is made of the type of studies each firm made in the period 1961 to 1965.

Number of Holes by Area

Western Tertiary area	81 holes
Western Snake River area	19 holes
Central Mesozoic area	12 holes
Other areas (prospects poor)	58 holes
	<u>170 total</u>

Type of Exploration Firm

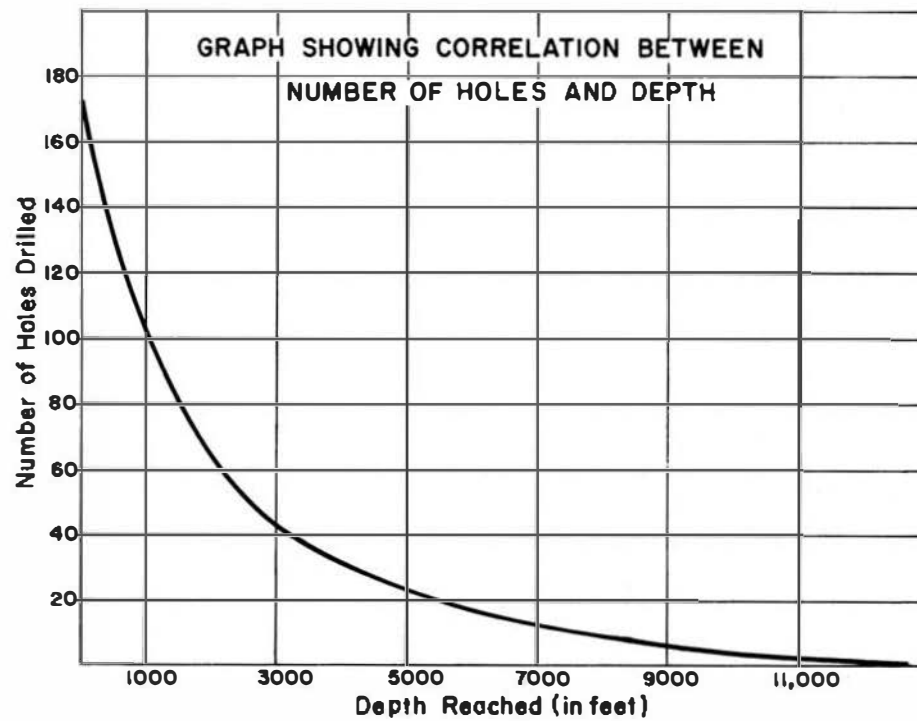
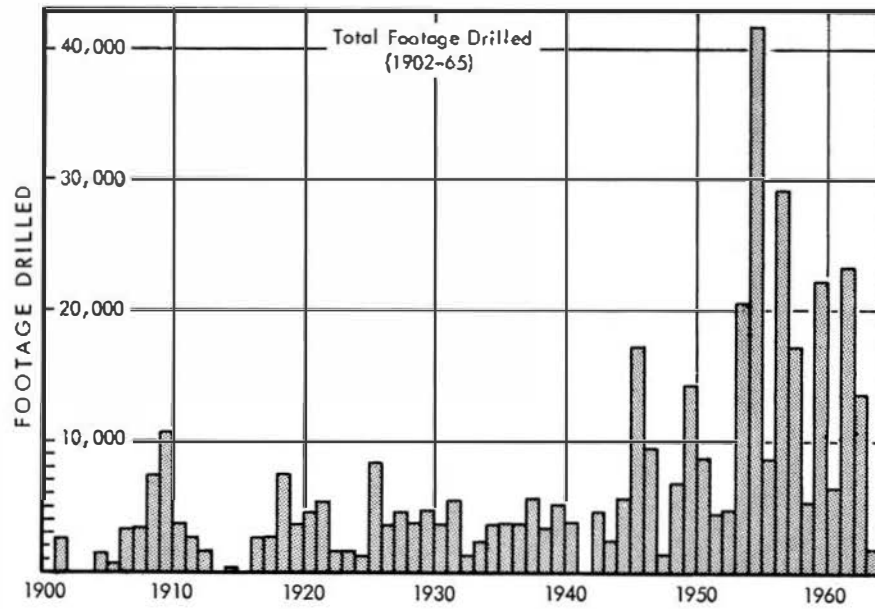
Producing companies	23 holes
Wildcatting firms	147 holes
	<u>170 total</u>

Depth of Drilling

Holes deeper than 2,000 feet	62	(30 percent of total)
Holes deeper than 5,000 feet	19	(11 percent of total)
Holes deeper than 8,000 feet	9	(5 percent of total)

Estimated Onshore Expenditures

1900 to 1920	\$ 3,000,000
1921 to 1940	5,200,000
1941 to 1965	14,300,000
Total	<u>\$22,500,000</u>



Estimated Offshore Expenditures

1961 to 1964	\$35,500,000
1965	<u>6,000,000</u>
Total	\$41,500,000

Preliminary Offshore Studies

<u>COMPANY</u>	<u>YEAR</u>	<u>TYPE EXPLORATION</u>
Shell Oil Co.	1961-64	Core drilling, conventional seismic sparker, gas exploder.
Gulf Oil Corp.	1961-62	Sparker, gas exploder, core-magnetic profiles.
Union Oil Co.	1961-64	Sparker, gas exploder.
Standard Oil of California	1961-64	Sparker, gas exploder.
Standard Oil Co., Group I	1961	Aeromagnetic profiles.
Standard of California		
Humble Oil & Refining Co.		
Mobil Oil Co.		
Marathon Oil Co.		
Pan American Petroleum Corp.		
Phillips Petroleum Co.		
Richfield Oil Corp.		
Superior Oil Co.		
Texaco, Inc.		
Standard Oil Co., Group II	1962-63	Conventional seismic.
Standard of California		
Humble Oil & Refining Co.		
Pan American Petroleum Corp.		
Superior Oil Co.		
Phillips Petroleum Co.		
Texaco, Inc.		
Superior Oil Co.	1962-64	Conventional seismic, gravity, sparker, aeromagnetic profiles.
Richfield Oil Corp., Texaco, & Mobil Oil Co.	1963-64	Core drilling, sparker.
Union Oil Co. & Standard of California	1963-64	Core drilling, conventional seismic.
Pan American Petroleum & Superior Oil Co.	1964	Core drilling.
Humble Oil & Refining Co.	1964	Core drilling, conventional seismic.
Mobil Oil Co. & Richfield Oil Co.	1964	Gas exploder.
Atlantic Refining Co.	1964	Sparker.
Texaco, Inc.	1964	Sparker.

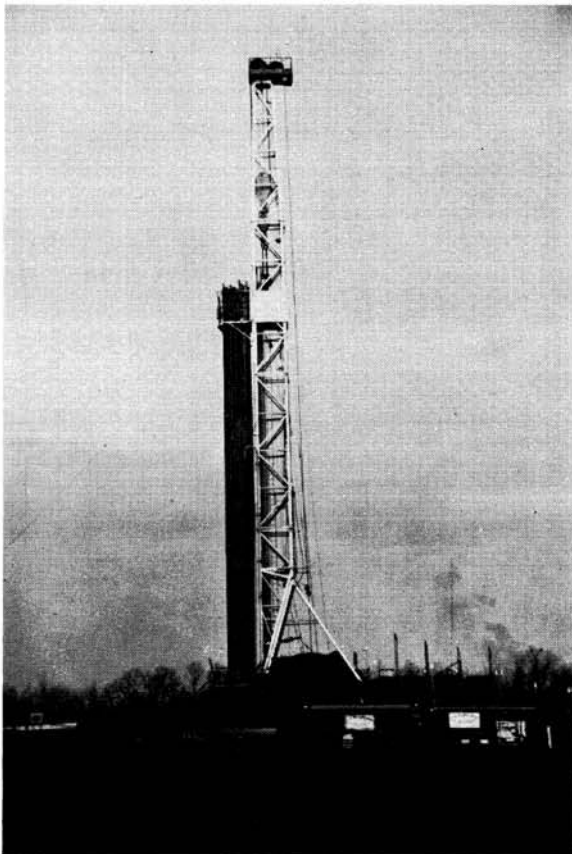
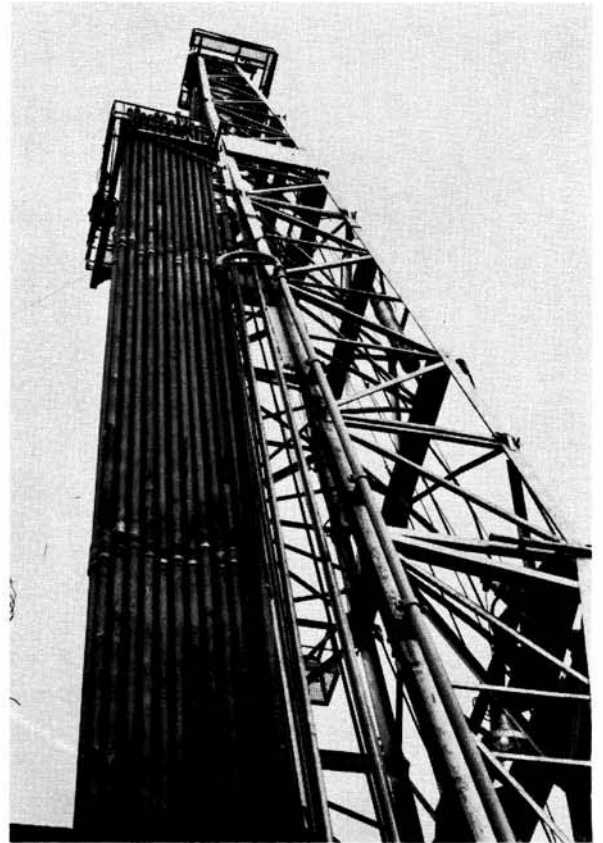
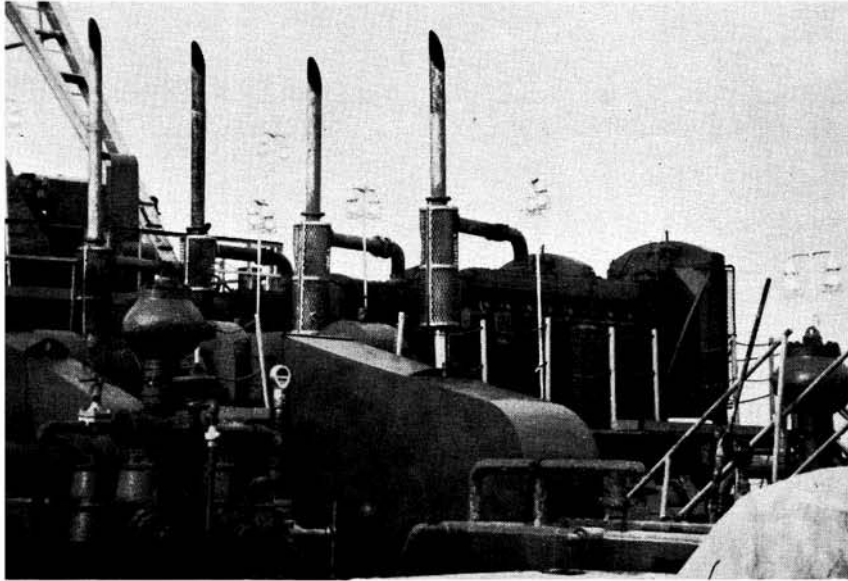
Oil Test Drilling Offshore

<u>COMPANY</u>	<u>WELL NAME</u>	<u>LOCATION</u>	<u>DATE</u>	<u>DEPTH</u>	<u>WATER DEPTH</u>
Shell Oil Co.	ET - 1	X=958,516 Y=277,419 OCS Tract 43	Aug. 1965	3,348'	320
Shell Oil Co.	ET - 2	X=959,642 Y=227,714 OCS Tract 43	Aug. 1965	8,353'	325
Standard- Union	Nautilus 1	X=1,020,659 Y= 457,162 OCS Tract 74	June 1965	12,628'	425
Union- Standard	Grebe 1	X=978,950 Y=327,200 OCS Tract 57	Aug. 1965	5,603'	215

Offshore Leasing Statistics

Summary of Bidding, OCS Lands - Oregon 1964

<u>Company or Group</u>	<u>Number of tracts bid</u>	<u>Number of tracts won</u>	<u>Average bid per acre</u>	<u>Expenditures for leases</u>	<u>Bids offered but unsuccessful</u>	<u>Per Cent Success of Bidding</u>
Standard/Union	67	29	\$38.60	\$9,479,156	\$4,872,816	45
Shell	41	23	51.80	8,905,073	3,596,390	59
Pan Am/Atl	54	27	23.00	5,189,460	1,883,140	50
Sup/Atl/Pan Am.	11	6	76.80	3,726,180	2,081,670	50
Sup/Pan Am.	2	2	245.00	2,822,688	--	100
Tex/Rich/Mob.	19	3	25.60	403,940	2,404,440	16
Union	1	1	376.00	2,165,760	--	100
Texaco/Mobil	2	1	161.00	1,101,484	751,334	50
Pan Amer.	4	4	64.00	1,473,925	--	100
Humble	4	0	31.00	-	719,077	-
Richfield	14	2	8.30	117,560	760,546	14
Gulf	4	2	17.00	197,000	196,550	50
Standard	6	1	8.80	45,366	260,968	17



Montgomery Drilling Co. equipment, which was used to drill Humble "Miller 1" and "Wicks 1" and Gulf "Porter 1." The rig is a National 130 which has a rated capacity of drilling to 16,000 feet. Upper left shows four Superior 325 hp diesels. The engines provide 1300 hp for the draw works on the Montgomery Drilling Co. equipment.

Summary of Oregon Offshore Leasing

Agency	Acreage	Bonus	Per Acre	Rental	Total Amount
State	13,600	\$ 28,996	\$ 2.13	\$ 13,600	\$ 42,596
Federal	425,550	\$27,760,240	\$65.23	\$1,276,650	\$29,036,890

Summary of Federal Lease Sales off the West Coast

Date	State	No. acres Offered	No. acres Leased	Total Bonus	Total Rentals	Average Per acre	Total Amount Received
5/14/63	Cal.	669,777	312,976	\$12,807,586	\$ 938,838	\$40.93	\$13,746,424
10/1/64	Ore.	836,134	425,433	27,768,772	1,276,302	65.27	29,045,074
10/1/64	Wash.	253,940	155,420	7,764,928	466,260	49.96	8,231,188

COMMENTS ON DATA LISTED IN THIS PUBLICATION

The information contained in this report is believed to be as complete as possible. Records on file with the Department describing oil and gas drilling in Oregon have been supplemented with available published data and with details obtained from Northwest Scouting Service reports, 1937 through 1954. Following passage of the Oregon Oil and Gas Conservation Act in 1954, the Department collected all available records of work done under the authority of this statute.

Paleontological information from oil and gas drillings is not included in the following tabulations, because so few data are available at present and because markers given by oil companies in the well histories are shown without substantiation. Salient facts concerning each test hole are listed in the "Remarks" column. Hydrocarbon shows believed to be authentic are mentioned in the tabulations. Water wells are listed in this report if they provide useful geologic information or if they encountered hydrocarbons.

Permits for core, seismic, and other shallow oil-exploration holes are required by State regulations, but only location plats must be filed with the Department. It is for this reason that shallow core holes and other types of near-surface drillings have not been included in the tabulations. They are not classified as oil and gas drillings in the law, and they do not generally provide useful stratigraphic information.

Additional information on many of the oil-test drillings listed in the following pages is on open file at the Portland office of the Oregon Department of Geology and Mineral Industries. A list of records obtainable from the Department is given in Miscellaneous Paper 8, "Available well records of oil and gas exploration in Oregon."

WELL DATA

COMPANY	WELL NAME	LOCATION AND ELEVATION	DATE	DEPTH	REMARKS
BAKER COUNTY					
Baker Group	Brooks-Hawley No. 1	Sumpter oreo - NW $\frac{1}{4}$ sec. 11, 10S, 37E, 1300' S. of N. line and 1220' E. of W. line. Elev. 4400' Gr.	1952	600'	Cable tools (Dept. file).
Baker Group	Williams No. 1	Haines oreo. SW $\frac{1}{4}$ sec. 2, 8 S., 40 E. 1320' N. of S. line and 1340' E. of W. line. Elev. 3448' Gr.	1952	257'	Cable tools, Small shows of gas and oil reported (Dept. file).
Griffith, Henry	?	Unity oreo. Sec. 15, 13 S., 37 E. Elev. 4500'.	1941	1700'	Cable tools (Dept. file).
BENTON COUNTY					
Carters Prod. & Refg. Synd. (Willamette Petrol. Synd.)	?	Corvallis oreo. NW $\frac{1}{4}$ sec. 11, 12S, 5W. 300' S. of N. line and 2100' E. of W. line. Elev. 230'.	1932-1934	2150'	Show of gas reported in salt-water sand. at 120'. Dept. file. (Weover, 1945)
Lakin, Dick	Well No. 1	Nashville area. NW $\frac{1}{4}$ sec. 31, 10S, 7W. 775' S. of N. line & 450' E. of W. line. Elev. 245'.	1931	400'	Cable tools. Small amount of gas encountered. See Table 1 for analysis. Dept. file. (McCusker)
Lakin, Dick	Well No. 2	Nashville area. NW $\frac{1}{4}$ sec. 31, 10S, 7W. 250' S. of N. line & 250' E. of W. line. Elev. 275'.	1931	700'	Cable tools. Derrick was reportedly destroyed by a gas blow-out. (McCusker)
CLACKAMAS COUNTY					
City of Conby	Water well	Canby SW $\frac{1}{4}$ sec. 33, 3S., 1E. Elev. 160' Gr.	1912	652'	Reported o 9' bed of asphalt at 519'. (Piper, 1942)
Home Oil & Gos Co.	?	Near the town of Clackamas. Located on the L. Vierhaus farm (Old Hess farm). ? 2S., 2E.	1910	1200'	Cable tools. (Washburne, 1914)
CLATSOP COUNTY					
Astoria Shale	Oil shale?	Astoria oreo.	1914	--	The Astoria Shale yields minute traces of oil by distillation at many locations. (Oil is found in concretionary limestone on the "Howkins Ranch" 11 miles north-west of Astoria at Beaver River, Wash.) (Washburne, 1914)

COMPANY	WELL NAME	LOCATION AND ELEVATION	DATE	DEPTH	REMARKS
CLATSOP COUNTY, Continued					
Harrison, H. C.	Water well	Warrenton area. Sec. 21, 8N., 10W (at Harrison Machine Shop). Elev. 25'	1910	280'	Gas blew water 10' or 15' above the top of the casing and sustained a good flame (Washburne, 1914).
Lower Colum- bia Oil & Gas Co.	Brown No. 1	Astoria Airport. NW $\frac{1}{4}$ NW $\frac{1}{4}$ sec. 25, 8N., 10W. Elev. 20'±. Gr.	1921- 1922	4808'	Gas shows and a trace of oil reported. (Weaver, 1945)
Standard Oil Co. of Calif.	Hoagland Unit No. 1	South of Astoria. SE $\frac{1}{4}$ sec. 11, 7N., 10W. 311'N. & 499'E. from S $\frac{1}{4}$ cor. Elev. 72' Gr.	1955	7101'	Rotary. Several fluorescent spots on fracture surfaces of core at 5470-5465'. (Dept. file)

COLUMBIA COUNTY

Lease- holding Syndicate	?	Dutch Canyon. NW $\frac{1}{4}$ sec. 17, 3N., 2W. 1600' S. of N. line & 2400' E. of W. line. Elev. 250' Gr.	1925- 1927	4426'	Cable tools. Gas at 1850' blew water and mud 20' above the top of the casing. See Table 1 for gas analysis (Weaver, 1945).
Mitchell Petrol. Engr. Corp.	Draper No. 1	Buxton area. SW $\frac{1}{4}$ sec. 4, 3N., 4W. Elev. 1080'.	1946	?	Venture given up shortly after it started. (McCusker)
?	"Buxton Well"	?, 3N., 4W.	1925	1600'	?
The Texas Co.	Potter No. 1 (core hole)	SE $\frac{1}{4}$ sec. 8, 4N., 3W. 650'N. & 1860'W. from SE cor. Elev. 1200'.	1940's	608+	Small gas show. See Table 1 for analysis. (Dept. file)
The Texas Co.	Clark & Wilson No. 6-1.	Mist area. NE $\frac{1}{4}$ sec. 19, 6N., 4W. 3042' N. of S. line & 1032'W. of E. line. Elev. 842' Gr.	1946- 1947	8501'	Rotary. Gas shows at 3060-3300'. Tests showed zones were wet. (Dept. file)
The Texas Co.	Benson- Clatskanie No. 1	Near Clatskanie. NE $\frac{1}{4}$ sec. 36, 7N., 4W. 617'N., & 1274'W. of E $\frac{1}{4}$ cor. Elev. 271' Gr.	1945	5660'	Rotary. Oily odor in volcanic breccia at 730-760. Faint acetone cut, trace of oil and gas in core at 1391-1401. (Dept. file)

COOS COUNTY

Chandler, W. S.	George Vernon property (coal pros- pect hole)	Westport Arch. Approx. sec. 4, 26S., 13W. Elev. 350'.	Before 1914	600'	A reliable source reported a tomato can full of oil was obtained from the 1 7/8" prospect hole (Washburne, 1914).
Coast Oil Co. (deep- ened by Fat Elk Oil Co.)	Well No. 1	Coquille oreo. NE $\frac{1}{4}$ SE $\frac{1}{4}$ sec. 10, 28S., 13W. Elev. 137'.	1929- 1934	2526'	Cable tools. A thin oil-bearing sand reported at 1585' and gassy salt water at 1745'. (McCusker)

COMPANY	WELL NAME	LOCATION AND ELEVATION	DATE	DEPTH	REMARKS
COOS COUNTY, Continued					
Coast Oil Co.	Well No. 2	Coquille area NE $\frac{1}{4}$ SW $\frac{1}{4}$ sec. 10, 28S., 13W. Elev. 140'.	1939	2255'	Cable tools. A good gas flow reported at 1170'. (McCusker)
Coast Oil Co.	Well No. 3	Coquille area. SW $\frac{1}{4}$ SE $\frac{1}{4}$ sec. 10, 28S., 13W. Elev. 140'.	1939	1640'	Cable tools. Reported to be a small gas well. (McCusker)
Coast Oil Co.	Well No. 4	Coquille area. SW $\frac{1}{4}$ SE $\frac{1}{4}$ sec. 10, 28S., 13W. Elev. 140'.	1939	1640'	Cable tools. Hit flowing salt water. (McCusker)
Coast Oil Co.	Rhodes-Menasha No. 1	Westport Arch. NE $\frac{1}{4}$ SE $\frac{1}{4}$ sec. 32, 26S., 13W. Elev. 80'.	1938	1365'	Cable tools. Reported shows of gas and numerous coal layers. (McCusker)
Libby Mine area	Pitch Cool occurrence	Westport Arch. Approx. sec. 3 or 4, 26S, 13W. Elev. 300'.	1920	--	Pitch cool found in fractures of coal. It is a form of asphalt. (Diller, 1901)
Oregon Coastal Corp.	J. Coy No. 1	Bandon area. NW $\frac{1}{4}$ sec. 4, 29S., 14W. 330'S. of N. line & 330'E. of W. line. Elev. 200'.	1953	1894'	Rotary. No oil or gas shows reported. (McCusker)
Pacific Petrol Co. (J.B.Ewell)	Morrison No. 1	Bandon area. S $\frac{1}{2}$ NW $\frac{1}{4}$ sec. 28, 28S., 14W. Elev. 210'.	1936- 1937	2282'	Claimed enough gas was encountered to fire the boiler. See gas analysis table No. 1 (Dept. file).
Phillips Petrol. Co.	Dobbyn's No. 1	Coos Bay area. SW $\frac{1}{4}$ sec. 28, 26S., 13W. 330'S. & 330'E. from W $\frac{1}{4}$ cor. Elev. 70'.	1943- 1944	6941'	Rotary. No oil or gas shows reported. Bottomed in Cretaceous metasediments and metavolcanics. (Dept. file)
Sunset Oil Co. (J.B.Ewell)	Bandon	Bandon area. Sec. 4, 29S., 14W. Elev. 300'.	1944	1089'	Rotary. (McCusker)
Warren, E.M.	Coos County No. 1-7	Beaver Hill. SE $\frac{1}{4}$ sec. 7, 27S., 13W. 450'N. of S. line & 2200' W. of E. line. Elev. 530' Gr.	1963	6337'	Rotary. Traces of gas and oil. (Dept. file)
West Shore Oil Co.	?	Bandon area. NW $\frac{1}{4}$ sec. 23, 30S., 14W. Elev. 730'.	1913- 1919	1400'+	(Dept. file)

CROOK COUNTY

Barnard Ranch	Oil occurrence	Suplee area. SW $\frac{1}{4}$ NW $\frac{1}{4}$ sec. 23, 17S., 25E.	1950		Light gravity oil found inside ammonites (Dept. file. Bowman, Jan. 31, 1950)
---------------	----------------	--	------	--	--

COMPANY	WELL NAME	LOCATION AND ELEVATION	DATE	DEPTH	REMARKS
CROOK COUNTY, Continued					
Gray, Lona	Berna No. 1	Brothers area. NE $\frac{1}{4}$ sec. 32, 19S., 18E. 600'N. & 300'W. of SE cor. Elev. 4380' Gr.	1951- 1952	1950	Cable tools. Encountered small flow of gas. See Table No. 1 for analysis. (Dept. file)
Great North- ern Oil & Gas Co.	?	?	1937	?	(McCusker)
Houston, Wayne	Kittridge No. 1	Brothers area. NE $\frac{1}{4}$ NE $\frac{1}{4}$ sec. 25, 19S., 19E. Elev. 4500' Gr.	1951- 1952	679'	Cable tools. Same rig that drilled the Lona Gray well. No shows reported. (McCusker)
Maury Mt. Mine (cinnabar)	Asphalt occurrence	Approx. 4 miles SE of Post, Sec. 10, 17S., 19E.	1940	--	Calcite and gilsonite accompanies ore in vein deposits. (Wilkinson, 1940)
Standard Oil of Cal.	Pexco- State No. 1	Brothers area. NE $\frac{1}{4}$ sec. 36, 20S., 20E. 3535' N. of S. line & 300 $\frac{1}{2}$ ' E. of W. line. Elev. 5704' Gr.	1955	7594'	Rotary. Traces of oil in cores at 6900-7400'. (Dept. file)
Sunray- MidContinent & Standard of Cal.	Bear Creek Unit No. 1	Roberts area. SE $\frac{1}{4}$ sec. 30, 17S., 19E. 1525'N. of S. line & 1038'W. of E. line. Elev. 4238' Gr.	1958	7919'	Rotary. Gas shows 3980-4020'. Bottomed in Jurassic(?). (Dept. file)
Suplee Post Office	Oil occurrence	Suplee. E $\frac{1}{2}$ sec. 26, 17S., 25E.	1965	-	Brownish, sticky oil in Triassic(?) limestone. Contained in small, quartz-lined vugs. (Dept. file)

DOUGLAS COUNTY

Clark, Sheldon C.	"Oakland Well"	Oakland area. SE $\frac{1}{4}$ sec. 8, 25S., 5W. Elev. 640'.	1926	2235	Reported considerable amount of gas with a trace of oil. (Smith, 1924)
Community Oil & Gas Co. (Oil Devel- opers, Inc.)	Scott No. 1	West of Roseburg. SW $\frac{1}{4}$ sec. 5, 27S., 6W. 570'N. of S. line & 485'E. of W. line. Elev. 400' Gr.	1954	3693'	Rotary. Oil shows in cores 1500-3520'. (Dept. file)
Diamond Drill Con- tract Co.	Coal prospect hole	Lookingglass area. Approx. sec. 21, 27S., 7W. Elev. 800'.	1910	1109	Gas encountered at 605'. (Dept. file)
Dillard, F. W.	?	Lookingglass area. Sec. 36, 27S., 7W. Elev. 580'.	1910	700'	Cable tools. Some oil in shale reported. (Washburne, 1914)
General Petrol. Corp.	Long Bell No. 1	North of Reedsport. SW $\frac{1}{4}$ sec. 27, 20S., 10W. 1640' E. & 1244'N. from SW cor. Elev. 48' Gr.	1957	9004'	Rotary. Slight gas show 5345'. Faint amber cut in cores at 5590'. Faint yellow fluorescence in core 6040-6060'. (Dept. file)

COMPANY	WELL NAME	LOCATION AND ELEVATION	DATE	DEPTH	REMARKS
DOUGLAS COUNTY, Continued					
Kernin, W. F.	Well No. 1	West of Roseburg. Sec. 16, 27S., 6W. Elev. 800'.	1931- 1948	3900'	Cable tools. Shows of gas and oil reported. (McCusker)
Kernin, W. F.	D. Coon No. 1	Dillard area. SE $\frac{1}{4}$ sec. 30, 28S., 6W. 900'S. of N. line & 900'W. of E. line. Elev. 940' Gr.	1954- 1958	400'	Cable tools. (Dept. file)
Melrose Seep	Oil seep	Melrose area. Approx. sec. 21, 26S., 6W.	1958	--	Light oil reported seen rising on gas bubbles in South Umpqua River near bank. Near confluence of North and South Umpqua Rivers. (Dept. file).
Riddle Gas & Oil Prod., Ltd.	Aikins No. 1	Riddle area. SE $\frac{1}{4}$ sec. 27, 30S., 6W. 1647' N. of S. line & 555'W. of E. line. Elev. 800'.	1958	480'	Cable tools. No shows reported. (Dept. file)
Riddle Gas & Oil Prod., Ltd.	Dayton No. 1	Riddle area. SW $\frac{1}{4}$ sec. 34, 30S., 6W. 960' N. of S. line & 1040' E. of W. line. Elev. 800'.	1955- 1958	1370'	Cable tools. A small flow of gas was found below 1000'. (Dept. file)
Riddle Gas & Oil Prod., Ltd.	Wollen- berg No. 1	Riddle area. NE $\frac{1}{4}$ sec. 28, 30S., 6W. 601'S. of N. line & 35'W. of E. line. Elev. 800'.	1956	1170'	Cable tools. Salt water encountered at 755'. (Dept. file)
Union Oil Co.	Liles No. 1	West of Sutherlin. SE $\frac{1}{4}$ sec. 27, 25S., 7W. 173'S. & 1144'W. from E $\frac{1}{4}$ cor. Elev. 725' Gr.	1951	7002'	Rotary. No shows reported except for one faint hydrocarbon cut. (Dept. file)
Uranium Oil & Gas Co.	Ziedrich No. 1	Camas Valley. NW $\frac{1}{4}$ sec. 16, 29S., 8W. 1570'S. & 238'W. of N $\frac{1}{4}$ cor. Elev. 1305'.	1955	4368'	Rotary. Bright yellow fluorescence in cores 4020-4050'. Some gas found at 1900'. (Dept. file)
Wilson Farm	Water well	Lookingglass area. Sec. 3, 28S., 7W. Elev. 640'.	1950	--	Small amount of paraffinic oil in well water. (Dept. file, Dole, July 1, 1953).
GILLIAM COUNTY					
Standard Oil of Cal.	Kirkpatrick No. 1	Condon area. SW $\frac{1}{4}$ sec. 6, 4S., 21E. 4319'W. & 2909'S. from NE cor. Elev. 2747' Gr.	1956	8726'	Rotary. Fluorescence in core at 8628-8678'. Bottomed in Pre-Tertiary marine sediments(?). (Dept. file)

COMPANY	WELL NAME	LOCATION AND ELEVATION	DATE	DEPTH	REMARKS
GRANT COUNTY					
Griffith, Wm.	?	Sec. 34, 9S., 28E. Elev. 3100'.	1947	400'+	(Napper, 1958; picture of rig on p. 41.)
Seneca Oil & Gas Co.	Lemmons No. 1	Izee area. NE $\frac{1}{4}$ sec. 18, 17S., 29E. Elev. 4800'.	1957	246	Coble tools. No shows. (Dept. file).
Sunnyvale Oil & Gas Co.	Federal- Mitchell No. 1	Izee area. SE $\frac{1}{4}$ sec. 14, 16S, 29E. Elev. 5200'.	1957	1168'	Rotary. No shows. (Dept. file)
HARNEY COUNTY					
Central Oregon Oil & Gas Co.	"Dog Mt. Well"	SE $\frac{1}{4}$ sec. 24, 25S., 30E. Elev. 4240'.	1912- 1920	3807'	Coble tools. Gas reported and a trace of oil (Buwoldo, 1921; Piper, 1939).
Consolidated Oil Co.	?	About 6 miles SE of Burns.	?	?	(Dept. file)
Fidelity Oil & Gas Co.	?	Near Horney Lake Sec. 5, 26S., 32E. Elev. 4100'.	1917	1430'	Small amount of gas reported. (Buwoldo, 1921)
Horney Volley Devel. Co. (Gt. Western Oil Co.)	Fay No. 1	Burns area. NE $\frac{1}{4}$ sec. 8, 24S., 32E. Elev. 4120'.	1937	2812'	Cable tools. Hit a strong flow of hot (140° F.) sulfur water. (McCusker)
Horney Volley Oil & Gas Co.	11 prospect holes $\frac{1}{2}$ mi. apart.	North shore of Horney Lake. Secs. 20, 21, 27, 28, 29, 30; 26S, 30E.	1909	74' to 252'	Holes reported to have found small amounts of gas. (Washburne, 1911)
Leake, J.	Water well	North shore of Molheur Lake. SW $\frac{1}{4}$ sec. 28, 25S, 32E. Elev. 4105'.	1909	347'	Reported to have encountered a strong gas flow with a trace of oil. (Washburne, 1911)
Love Drilling Co.	Vogler No. 1	Burns area. SE $\frac{1}{4}$ sec. 25, 24S, 31E. Elev. 4113'.	1949- 1950	4550'	Rotary. No shows. (Dept. file)
Oregon Oil Co.	?	North shore of Molheur Lake. NW $\frac{1}{4}$ sec. 18, 25S, 32E. Elev. 4106'.	Before 1929	1000+	(Piper, 1939)
Oregon Oil Co.	?	North shore of Molheur Lake. NW $\frac{1}{4}$ sec. 19, 25S, 32 $\frac{1}{2}$ E. Elev. 4097'.	Before 1929	600'	(Piper, 1939)
Oregon Western Coloniz. Co. (Davis Ranch)	Water well	Burns area. SW $\frac{1}{4}$ sec. 1, 23S, 30E. Elev. 4240'.	1930+	400'	Paraffin reported in black sand at 175'. (Piper, 1939)

COMPANY	WELL NAME	LOCATION AND ELEVATION	DATE	DEPTH	REMARKS
HARNEY COUNTY, Continued					
Oroco Oil & Gas Co.	Portland Co. No. 1	Lawen area. NW $\frac{1}{4}$ sec. 18, 24S, 33E. 1287'S. of N. line & 1254'E. of W. line. Elev. 4110'.	1956	2247'	Rotary. No shows. (Dept. file)
State Drilling Co. (Geo. Mefford)	Jones & Sullivan No. 1	Lawen area. SE $\frac{1}{4}$ sec. 6, 24S, 33E. Elev. 4115'.	1939- 1959	1513'	Cable tools. (Dept. file)
United Co. of Oregon	Fay No. 1	Lawren area. SE $\frac{1}{4}$ Sec. 9, 24S, 33E. Elev. 4130 Gr.	1945- 1948	3826'	Rotary. No shows. (Dept. file)
United Co. of Oregon	Weed & Poteet No. 1	Lawren area. NW $\frac{1}{4}$ sec. 9, 23S, 31E. 2848'N. of S. line & 217'E. of W. line. Elev. 4151 Gr.	1949	6480'	Rotary. No shows. (Dept. file)

JACKSON COUNTY

Antelope Creek	Asphalt occurrence	Northeast of Ashland. Sec. 4, 38S., 2E.	1956	--	Small seams of asphalt in tuffaceous shale. (Harrison and Eaton, 1920)
Hartman Oil Shale Co.	Oil shale occurrence	East side of Grizzly Peak, 16 miles northeast of Ashland.	1924	--	Oil was retorted from bituminous shale, but failed to be economic. A large camp was constructed at the site. (Smith, 1924)
Mundy, . . J. F.	"Roxy Ann"	Medford area. NE $\frac{1}{4}$ sec. 26, 37S., 1W. Elev. 1900'.	1919- 1921	1000'±	(Kellogg, 1920)
Trigonia Oil Co.	?	Medford area. Sec. 14, 38S., 1W. Elev. 1700'.	1920- 1924	2257'	Oil and gas shows reported. (Kellogg, 1920, 1921)
Vulcan Oil & Gas Co.	?	Sams Valley. Approx. 6 mi. from Gold Hill.	1920- 1921	?	(Kellogg, 1920, 1921)
?	?	Sec. 25, 37S., 2W.	?	1240'	(Dept. file)
?	?	SW $\frac{1}{4}$ NE $\frac{1}{4}$ Sec. 20, 36S., 1W.	?	1250'	(Dept. file).
?	?	NE $\frac{1}{4}$ NW $\frac{1}{4}$ Sec. 12, 38S., 1W.	?	628'	(Dept. file)

JEFFERSON COUNTY

Central Oils, Inc. (Northwest Oils, Inc.)	Morrow Bros. No. 1	Grizzly area. SW $\frac{1}{4}$ sec. 18, 12S., 15E. 700'N. of S. line & 900'E. of W. line. Elev. 3200' Gr.	1952- 1959	3300'	Rotary. No shows reported. (Dept. file)
Love Drilling Co.	Wickman No. 1	Madras area. NE $\frac{1}{4}$ sec. 27, 11S., 15E. Elev. 2700' Gr.	1950	2718'	Rotary. No shows reported. (McCusker)

COMPANY	WELL NAME	LOCATION AND ELEVATION	DATE	DEPTH	REMARKS
JEFFERSON COUNTY, Continued					
Northwest Oils, Inc.	Fulton No. 1	Center sec. 17, 9S., 15E. Elev. 1735' Gr.	1952	400'	(McCusker)

KLAMATH COUNTY					
Klamath Oil Co.	Manning No. 1	Approx. 7 miles south of Klamath Falls. SE $\frac{1}{4}$ sec. 1, 40S., 9E., 100'S. of N. line & 400'W. of E. line. Elev. 4100'.	1919- 1930	1965'	(Buwalda, 1921)
Langeli Valley Oil Co.	"Bonanza Well"	NE $\frac{1}{4}$ sec. 19, 39S., 12E. Elev. 4150'.	1926- 1941	4365'	Cable tools. Hit hot water (200°F.) at 3850'. (Van Orstrand, 1938)
Oakland Interests	Oakland No. 1	Dairy. SW $\frac{1}{4}$ sec. 19, 38S., 11E. Elev. 4160'.	1931	500'	Cable tools. (Van Orstrand, 1938)
The Crater Oil & Gas Co.	Well No. 1	Merrill. 41S., 10E. Elev. 4060'.	1930's	685	Cable tools. (Van Orstrand, 1938)
Yonna Valley Oil & Gas Co.	Dairy No. 1	Bonanza area. Sec. 14, 39S., 11 $\frac{1}{2}$ E. Elev. 4120'.	?	2000+	Cable tools. Flowed warm water at 550', 935', and 1300' (85°F.) (Van Orstrand, 1938)

LAKE COUNTY					
Carter Ranch	Water well	Approx. 9 miles south of Lakeview. 40S., 19E.	1915 [±]	370'	Small flow of inflammable gas with water. See Table No. 1 for analysis. (Buwalda, 1921)
City of Lakeview	Water well	Lakeview. NE $\frac{1}{4}$ sec. 15, 39S., 20E. Elev. 5000'.	Before 1938	2380'	Hot water found in lower portion of the hole (150°F.) (Van Orstrand, 1938)
Lakeview Oil Co.	Well No. 1	West of Lakeview. SE $\frac{1}{4}$ sec. 16, 39S., 19E. Elev. 4800'.	1940	2870'	Rotary. Small amount of gas re- ported. (Dept. file)
Lakeview Oil Co.	Well No. 2	West of Lakeview. Sec. 22, 39S., 19E. Elev. 4800'.	1940- 1941	1680'	Rotary. (Dept. file)
Humble Oil & Refg. Co.	Leavitt No. 1	Lakeview. NE $\frac{1}{4}$ sec. 2, 40S., 20E. 412'S. of N. line & 991'W. of E. line. Elev. 4784'.	1960- 1961	9579'	Rotary. No shows. (Dept. file)
Humble Oil & Refg. Co.	Thomas Ck. Unit. Block III Well No. 1	NE $\frac{1}{4}$ sec. 18, 36S., 18E. 400'N. of S. line & 925'W. of E. line. Elev. 5260'.	1960	12,093'	Rotary. No shows. Drilled entirely in Tertiary volcanics and cont. seds. Gas shows in lake beds(?) 7300-7500'. (Dept. file)
Oregon Land & Devel. Co.	Tom No. 1	South of Christmas Lake. NE $\frac{1}{4}$ sec. 21, 27S., 18E. 400'S. & 400'W. of NE cor. Elev. 4300' Gr.	1953	635'	Rotary. (Dept. file)

COMPANY	WELL NAME	LOCATION AND ELEVATION	DATE	DEPTH	REMARKS
LAKE COUNTY, Continued					
Stork, Rolph W. (Tri-State Petrol.)	Fisher No. 1	West of Lakeview. SW $\frac{1}{4}$ sec. 22, 40S., 19E. Elev. 4750' Gr.	1950- 1951	2900±	Rotary. Strong flow of gassy water. See analysis in Table No. 1. (Dept. file)
Stork, Lyell W.	Stockburger No. 1	West of Lakeview. NW $\frac{1}{4}$ sec. 15, 40S., 19E. Elev. 4700' Gr.	1953	1730'	Rotary. Hit flow of worm, gassy water (80°F.) (Dept. file)
Stone, Chas. A.	Anderson No. 3	West of Lakeview. SW $\frac{1}{4}$ sec. 20, 39S., 19E. 2290' N. of S. line & 20'E. of E. line. Elev. 4800'.	1955	730'	Rotary. No shows reported. (Dept. file)

LANE COUNTY					
?	"Eugene Well"	NE $\frac{1}{4}$ NW $\frac{1}{4}$ sec. 8, 18S., 3W. Elev. 440'.	?	2500'	(Piper, 1942)
Guarantee Oil Co.	?	Eugene area. SE $\frac{1}{4}$ sec. 5, 18S., 3W. Elev. 405'.	1926- 1927	3000'	Cable tools. No show reported. (Piper, 1942)
Guarantee Oil Co.	?	Cottage Grove. NW $\frac{1}{4}$ sec. 28, 20S., 3W. Elev. 875'.	1920's	1403'	Cable tools. (Piper, 1942)
Johnson Ranch	Oil occurrence	North Fork of the Siuslaw River approx. 6 mi. north- east of Florence, approx. sec. 31, 17S., 11W.	1901	--	Small amount of oil seen in basalt cavities, less common in joints. Found in a dike cutting Eocene marine seds. Oil was analyzed and two types of oils described. (Harrison and Eaton, 1920)
Pleasant Hill District	Gas occurrence	Sec. 21, 18S., 2W.	1944	--	Gas seep reported in a spring on the west side of the ridge, $\frac{1}{2}$ to $\frac{1}{4}$ mile from road bounding sec. 21. (Dept. file)
Sinclair Oil & Gas Co.	Federal- Mapleton No. 1	Mapleton area. SE $\frac{1}{4}$ sec. 12, 16S., 10W. 1629'N. & 246'W. from SE cor. Elev. 483' Gr.	1955	12,880	Rotary. Deepest drilling in Oregon. Positive hydro-carbon cut in shale at 5310-5320, also some black, tarry oil. Top of Siletz River Volcs. 6600'±. (Dept. file)

LINCOLN COUNTY					
Johnson Lumber Co.	Water well	Toledo area. Approx. NE $\frac{1}{4}$ sec. 18, 11S., 10W. Elev. 250'.	1948	1900'	Reported gas show at 335' and a strong gas zone at 1330'. (Smith, 1926)
Newport	Oil shale	Approx. sec. 10, 11S., 11W.	1924	--	Petroliferous "Acila shale." Good odor on fresh fracture. (Smith, 1926)
Oregon Oil & Gas	Roberts No. 1	Nashville area. NE $\frac{1}{4}$ sec. 25, 10S., 8W. Elev. 910'.	1958	2630'	Rotary. Gassy salt water encoun- tered below 1200'. See gas analysis Table No. 1. (Dept. file)

COMPANY	WELL NAME	LOCATION AND ELEVATION	DATE	DEPTH	REMARKS
LINCOLN COUNTY, Continued					
Pacific Coast Oil Devel.Co.	?	Approx. SE $\frac{1}{4}$ sec. 25, 13S., 12W. Elev. 160'.	1919±	1175'±	Reported a small amount of gas at 900', which gave a 6' flame. (Smith, 1924)
?	?	In the midst of the sand dunes north of Waldport.	Before 1926	?	(Smith, 1926)

LINN COUNTY

Gulf Oil Corp.	Porter No. 1	Halsey area. NE $\frac{1}{4}$ sec. 27, 13S., 4W. 660'N. & 660'E. from center sec. Elev. 266' Gr.	1963- 1964	8470'	Rotary. Test at 3811' yielded a very gassy flow of salt water. Gas contained 98% nitrogen. Hit very high pressure salt water at 5182'. (Dept. file)
Humble Oil &	Miller No. 1	Jefferson area. SE $\frac{1}{4}$ sec. 10, 10S., 3W. Elev. 215'.	1962	4951'	Rotary. Hit salt-water sand at 2425'. (Dept. file)
Linn County Oil Devel. Co.	Barr No.1	Lebanon area. NW $\frac{1}{4}$ sec. 32, 11S., 1W. 262'S. & 790'E. from NW cor. Elev. 355' Gr.	1958	4529'	Rotary. Oil shows reported. Attempt to complete the well failed. See gas analysis in Table No. 1. (Dept. file)
Reserve Oil & Gas Co.	Esmond No. 1	Lebanon area. SW $\frac{1}{4}$ sec. 7, 12S., 1W. 1194'N. & 575'W. Elev. 475' Gr.	1962	8603'	Rotary. Encountered very high pressure gassy salt water at 7055'. Flowed 2000 B/D very gassy salt water on test. See gas analysis Table No. 1. (Dept. file)

MALHEUR COUNTY

Baker & Malheur Oil Co.	Well No. 1	South of Vale. SW $\frac{1}{4}$ sec. 4, 19S., 45E. Elev. 2500'.	1909	340'	Cable tool. Oil show reported. (Washburne, 1911)
Baker & Malheur Oil Co.	Well No. 2	South of Vale. NE $\frac{1}{4}$ sec. 10, 19S., 45E. Elev. 2600'.	1909	320'	Cable tools. Some gas reported. (Washburne, 1911)
Baker & Malheur Oil Co.	Well No. 3	South of Vale. NW $\frac{1}{4}$ sec. 29, 19S., 45E. Elev. 2500'.	1909	163'	Cable tools. Few pieces of salt reported. (Washburne, 1911)
Boswell & Johnson	Water well	Vale. ? 18S., 45E., Elev. 2240'	1909	300'	Films of oil on sulfur water reported. (Washburne, 1911)
Boyer, A. F.	Water well	Ontario. SE $\frac{1}{4}$ sec. 9, 18S., 47E. Elev. 2159'.	1902	215'	Gas in water, used to supply lighting jets and cooking range for more than 7 years. (Russell, 1903; Washburne, 1911)

COMPANY	WELL NAME	LOCATION AND ELEVATION	DATE	DEPTH	REMARKS
MALHEUR COUNTY, Continued					
Columbia Oil & Gas	Well No. 1	Double Mountain. SW $\frac{1}{4}$ sec. 4, 20S., 44E. Elev. 2650'.	1909- 1910	975'	Cable tools. Hit a strong flow of gas in basalt at 580'. Gas had an H ₂ S odor. Oil films noted in boiling water. (E&MJ, 1909; Washburne, 1911)
County	Water well	Vole Courthouse. Sec. 4, 18S., 45E. Elev. 2242'.	1909	1100±	Found a trace of oil at 1100'. (Washburne, 1911)
Eastern Oregon Oil Co.	Well No. 1	Sec. 12, 20S., 45E.	1909- 1910	815'	Cable tools. Reported oil shows. (E&MJ, 1909; Washburne, 1911)
El Paso Nat. Gas Co.	Federal- Spurrier No. 1	South of Vole. NE $\frac{1}{4}$ sec. 5, 20S., 44E. 360'S. of N. line & 550'W. of E. Line. Elev. 2519'.	1954- 1955	7470'	Rotary. Some gas shows reported. (Dept. file)
Freel, Frank	Water well	Adrian. SW $\frac{1}{4}$ sec. 14, 21S., 46E. Elev. 2200'.	1942	508'	Cable tools. Gas in water used for cooking and heating, 1942-1960. Gas has H ₂ S odor. See Analysis Table No. 1. (Dept. file)
Holledy, T. W.	Water well	Vole. 18S., 45E. Elev. 2240'.	Before 1909	1000'±	Gas encountered in water sand at 900'. (Washburne, 1911)
Hirsch Ranch	Water well	Dry Gulch, approx. 18 miles north of Vole.	Before 1909	1700'	Gas reported. (Washburne, 1911)
Idaho- Oregon Prod. Co.	Elvera- Reclo No. 1	South of Vole SE $\frac{1}{4}$ sec. 9, 19S., 44E. Elev. 2332'.	1950	4611'	Rotary. No shows reported. (Dept. file)
Jensen	Water well	Near Mud Spring. Sec. 29, 20S., 45E. Elev. 3000'.	Before 1909	?	Gas reported at 100'. (Washburne, 1911)
Molheur Oil Co.	?	Southwest of Vole. Sec. 31, 19S., 44E. Elev. 2450'.	1909	1680±	Cable tool. Small amount of gas with H ₂ S odor. (Washburne, 1911)
Mammoth Oil & Gas Co.	?	Cow Hollow. Sec. 6, 20S., 45E. Elev. 2700'.	1909	1280±	Cable tools. Small amounts of gas and oil reported. Gas had H ₂ S odor. (Washburne, 1911)
Mud Spring	Gas occurrence	Sec. 29, 20S., 45E. Elev. 3000'.	1909	--	Cold spring from which a "copious quantity" of odorless, inflammable gas issued. (Washburne, 1911)
North- western Pacific Oil & Gas Co.	Well No. 1	Sand Hollow. Sec. 19, 19S., 44E. Elev. 2500'.	1919	1260'	Cable tools. Hit hot water (115° F.) (Buwoldo, 1921)

COMPANY	WELL NAME	LOCATION AND ELEVATION	DATE	DEPTH	REMARKS
MALHEUR COUNTY, Continued					
Ontario Cooperative Gas & Oil Co.	?	Ontario. 18S., 47E. Elev. 2180'.	1909- 1913	4362'	Cable tools, deepened with rotary. Well blew out while drilling at 1070' and 2200'. Blew mud and water over the derrick crown. See gas analysis Table No. 1. (Washburne, 1911; Parks, 1912; Buwalda, 1921, 1923)
Oroco Oil & Gas	Bolles No. 1	Payette area. NW $\frac{1}{4}$ sec. 15, 17S., 47E. 660'S. of N. line & 400'W. of E. line. Elev. 2147'. Gr.	1955	1966'	Rotary. Well blew out while drilling at 1540'. Tests showed gassy, brackish water below 1080'. (Dept. file)
Oroco Oil & Gas Co.	McBride No. 1	Weiser area. SE $\frac{1}{4}$ sec. 19, 16S., 46E. 1566'N. of S. line & 1419'W. of E. line. Elev. 2900'.	1956	4506'	Rotary. No significant shows. (Dept. file)
Riddle, H. K.	Kiesel Estate No. 1	Nyssa area. SW $\frac{1}{4}$ sec. 8, 19S., 47E. 1260'N. of S. line & 1370'E. of W. line. Elev. 2177' Gr.	1954	5137	Rotary. Gassy, fresh water 900-5042'. (Dept. file)
Sand Hollow	Oil occurrence	West bank at Sand Hollow. Sec. 29, 19S., 44E. Elev. 2390'.	1909	-	Dark gray bed of hard petroliferous freshwater sandstone. Good odor on fresh fracture. Yielded an amber- colored oil by ether extraction. (Washburne, 1911)
Sinclair Oil & Gas Co.	East.Oreg. Land Co. No. 1	Willow Creek. SW $\frac{1}{4}$ sec. 15, 16S., 44E. 660'N. of S. line & 1980'E. of W.line. Elev. 2640'.	1955	4888'	Rotary. No shows reported. (Dept. file)
Small Creek	Oil occurrence	East side of Small Creek. NW $\frac{1}{4}$ sec. 2, 20S., 44E. Elev. 2600'.	1909	--	Dark gray sandstone, as found in Sand Hollow. (Washburne, 1911)
Sta-Tex Oil Co. (R.A. Stamey)	Russell No. 1	Vale area. NW $\frac{1}{4}$ sec. 14, 19S., 44E. 330'S. of N. line & 330'E. of W. line. Elev. 2290' Gr.	1954	4336'	Rotary. Some small gas shows. (Dept. file)
Sunset Oil Co.	?	About 12 miles northwest of Vale.	1919	500'	(Buwalda, 1921)
TwoState Oil & Gas Co.	Vale City No. 1	Vale. SW $\frac{1}{4}$ sec. 21, 18S., 45E. 3310'S. of N. line & 660'E. of W. line. Elev. 2250' Gr.	1961- 1962	1185'	Cable tools. No shows. Good flow of warm water at 560'. (Dept. file)

COMPANY	WELL NAME	LOCATION AND ELEVATION	DATE	DEPTH	REMARKS
MALHEUR COUNTY, Continued					
United Devel. Corp.	Dorman No. 1	Ontario area. Sec. 25, 18S., 46E. Elev. 2250'.	1932	625'	Cable tools. Gas show reported at 540'. (McCusker)
Western Pacific Oil & Gas Co.	Well No. 1	Approx. 8 miles southwest of Vole. Sec. 19, 19S., 44E. Elev. 2500'.	Before 1938	1260'+	(Von Orstrond, 1938)
?	Water well	Mosquite. Approx. sec. 19, 15S., 46E. Elev. 2150'.	Before 1909	1400'	Good flow of gas reported at 1400'. (Washburne, 1911)
?	?	A short distance northwest of Weiser, Idaho.	1907	1050'	Gas blew mud and water 80' into the air. (Washburne, 1911)

MARION COUNTY

Erntson, V. V.	Schermocher No. 1	Turner area. NE $\frac{1}{4}$ sec. 27, 9S., 2W. 264'S. & 345'W. from NE cor. Elev. 322'.	1958	2426'	Rotary. No shows encountered. (Dept. file)
Humble Oil & Refg. Co.	Wicks No. 1	Silverton area. NE $\frac{1}{4}$ sec. 11, 7S., 1E. 1681'W. & 1633'S. from NE cor. Elev. 702'.	1962	7797'	Rotary. No shows encountered. (Dept. file)
Portland Gas & Coke Co.	Steiwer No. 1	NW $\frac{1}{4}$ sec. 14, 9S., 3W. 1580'S. & 400' E. of NW. cor. Elev. 250'.	1935-1936	3617'	Cable tools. Several gas shows, some in salt water sands. (Dept. file)
Portland Gas & Coke Co.	Wiedehker No. 1	Buena Vista area. NW $\frac{1}{4}$ sec. 24, 9S., 3W. Elev. 350'.	1933-1935	2845'	Cable tools. Gas and oil reported in saltwater sand at 2535-2845'. (Dept. file)
Willamette Valley Oil & Gas	?	Mt. Angel area. SW $\frac{1}{4}$ sec. 31, 4J., 2W. Elev. 170'.	1922	1040'	(Piper, 1942)

MORROW COUNTY

Vey Ranch	Water well	SE $\frac{1}{4}$ sec. 24, 1N., 27E. Elev. 2100'.	1958	777'	Cable tools. Found inflammable gas in porous basalt at 562', 648', and 699'. Shut-in pressure 39 psi. See gas analysis Table No. 1. (Dept. file)
Wells Spring	Gas seep	Wells Spring. 2N., 25E. Morrow County	?	-	(Dept. file)

COMPANY	WELL NAME	LOCATION AND ELEVATION	DATE	DEPTH	REMARKS
MULTNOMAH COUNTY					
Holloway, Ross	Water well	East Portland. SW $\frac{1}{4}$ sec. 24, 1S., 2E. Elev. 680'.	1949	823'	Hit gas at 799', which had a strong odor of oil.
Richfield Oil Corp.	Barber No. 1	Portland area. SE $\frac{1}{4}$ sec. 23, 1N., 1W. 2095'N. & 1700'W. from SE cor. Elev. 1046'.	1946	7885'	Rotary. No significant oil or gas shows. Bottomed in Tillamook Volcanics. (Dept. file)
Sunray- Mid-Cont. Oil Co.	Kappler No. 1	Portland area. NW $\frac{1}{4}$ sec. 12, 2N., 2W. 1901'S. & 431'E. from NW cor. Elev. 229'.	1957	1666'	Rotary. No shows encountered. (Dept. file)
POLK COUNTY					
Alexander, Sam	?	Dolph Corner. Sec. 14, 7S., 5W. Elev. 175'. Gr.	1931	1440'	Cable tools. Some gas with salt water. See gas analysis Table 1. (Dept. file)
Brophy, H. B.	Asphalt occurrence	Eola area, 4 $\frac{1}{2}$ miles west of Salem.	1914	--	Gilsonite veinlets in Miocene sandstone. (Washburne, 1914)
Hirschberg, H.	?	Dallas area. Approx. sec. 11, 8S., 5W. Elev. 350'.	1903	1050'	Some gas and a trace of oil re- ported. A strong flow of salt water was also obtained. (Stafford, 1904)
Lewis, Marvin	Crossley- Jennings No. 1	Holmes Gap. (See Reserve-Roy- L&G Bruer No. 1)	1963- 1965	5549'	Plugged back and retested Reserve well at Holmes Gap. (Dept. file)
Miller, J. T.	Adams No. 1	Dallas area. SW $\frac{1}{4}$ sec. 11, 8S., 5W. Elev. 265'.	1962	410'	Cable tools. No shows reported. (Dept. file)
Miller, J. T.	Adams No. 2	Dallas area. SW $\frac{1}{4}$ sec. 11, 8S., 5W. Elev. 270'.	1964	622'	(Dept. file)
Miller, J. T.	Sullenger No. 1	Dallas area. NE $\frac{1}{4}$ sec. 18, 8S., 5W. Elev. 400'.	1960	710'	Rotary encountered some thin coal seams. (Dept. file)
Miller, Mitchell & Assoc.	Bliven No. 1	Dallas area. SW $\frac{1}{4}$ sec. 11, 8S., 5W. Elev. 250'.	1962	389'	Cable tools. No shows reported. (Dept. file)
Mitchell, Ross & Assoc.	Adams No. 1	Dallas area. NW $\frac{1}{4}$ sec. 15, 8S., 5W. Elev. 200'.	1960	340'	Cable tools. No shows reported. (Dept. file)
Mitchell, Ross & Associates	Bliven No. 1	Dallas area. NW $\frac{1}{4}$ sec. 15, 8S., 5W. Elev. 550'.	1959	1347'	Cable tools. Small amount of gas encountered. See gas analysis in Table No. 1. (Dept. file)

COMPANY	WELL NAME	LOCATION AND ELEVATION	DATE	DEPTH	REMARKS
POLK COUNTY, Continued					
Mitchell, Ross & Associates	Bliven No. 2	Dallas area. SE $\frac{1}{4}$ sec. 10, 8S., 5W. Elev. 260'.	1960	430'	Coble tools. No shows reported. (Dept. file)
Mitchell, Ross & Assoc.	Bliven No. 3	Dallas area. SE $\frac{1}{4}$ sec. 10, 8S., 5W. Elev. 300'.	1960	580'	Coble tools. Trace of gas and oil colors in salt water. (Dept. file)
Mitchell, Ross & Assoc.	Paige No. 1	Dallas area. SW $\frac{1}{4}$ sec. 11, 8S., 5W. Elev. 250'.	1959	600'	Coble tools. No shows reported. (Dept. file)
Miriam Oil Co.	Bliven No. 1	Dallas area. SW $\frac{1}{4}$ sec. 11, 8S., 5W. Elev. 250'.	1957	1300'	Coble tools. No significant shows reported. (Dept. file)
Miriam Oil Co.	Bliven No. 2	Dallas area. SE $\frac{1}{4}$ sec. 10, 8S., 5W. Elev. 300'.	1957	506'	Coble tools. Hole caved. Moved over 70' and started "Bliven No. 3." (Dept. file)
Miriam Oil Co.	Bliven No. 3	Dallas area. SE $\frac{1}{4}$ sec. 10, 8S., 5W. Elev. 300'.	1957	1801'	Rotary. Traces of oil reported. (Dept. file)
Miriam Oil Co.	Elliott No. 1	Dallas area. SW $\frac{1}{4}$ sec. 9, 8S., 5W. 395'S. of N. line & 1390'E. of W. line. Elev. 525'.	1955- 1958	1822'	Coble tools to 1080', rotary to 1822'. Small amount of gas at 630'. (Dept. file)
?	"McBee Well" (May be some as Oregon Oil & Pipe Line Co. well.)	Dallas area. NW $\frac{1}{4}$ sec. 7, 8S., 5W. Elev. 320'.	Before 1910	1450'	Some gas shows reported. (Baldwin, 1964)
Oregon Oil & Pipe Line Co.	?	Approx. 3 miles south- west of Dallas.	1917	2600'	Gas shows reported at 1400-1500'. Gas burned with a 2' flame from the end of 10" casing. (Washburne, 1914)
Reserve Oil & Gas Co.	Roy - L&G- Bruer No. 1.	Holmes Gas. NE $\frac{1}{4}$ sec. 31, 6S., 4N. 2334'S. & 1855'W. from NE cor. Elev. 346' Gr.	1960	5549'	Rotary. Gas in salt water at 1540'. Bottomed in Siletz River Volcanics. (Dept. file)
Riggs, Coss	Water well	Holmes Gas. SE $\frac{1}{4}$ sec. 6, 7S., 4W. Elev. 200'.	Before 1917	?	Supplied gas for domestic use for several years. See gas analysis Table No. 1. (Smith, 1925)
?	"Whiteaker Well"	Dallas area. Sec. 11, 8S., 5W. Elev. 350'.	1910	2250±	Coble tools. Oil and gas shows re- ported. (Baldwin, 1964)

COMPANY	WELL NAME	LOCATION AND ELEVATION	DATE	DEPTH	REMARKS
TILLAMOOK COUNTY					
Jonnsen Drilling Co.	Water well	Tillamook area. NE $\frac{1}{4}$ SE $\frac{1}{4}$ sec. 16, 15., 9W. Elev. 240'.	1959	200'+	Drilled through 1 foot of oil sand at 147'. Cutting samples fluoresced a dull, pale yellow. Sand had a strong kerosene odor. (Dept. file)
Mohler Sand & Grovel Co.	Oil occurrence	Nehalem area. NW $\frac{1}{4}$ sec. 5, 3N., 9W.	1958	--	Kerosene-like oil found in gravel bordering the Nehalem River. (Dept. file)
Necorney Hydrocarbon Oil Co.	?	Nehalem area. Sec. 32, 3N., 10W. Elev. 35'.	1910	1535'	Traces of gas reported. (Warren, 1945, near end of text.)
Portland Cool & Devel. Co.	?	Tillamook area. SW $\frac{1}{4}$ sec. 10, 2S., 9W. Elev. 90'.	1910	2532'	Small amount of gas. See analysis Table No. 1. (Washburne, 1914)
?	?	Tillamook area. Within a few yards of Par- land Cool & Devel. Co. well.	Before 1910	700'	Small amount of gas reported. (Washburne, 1914)
Skukum Lake	Asphalt occurrence	Approx. 6 miles southwest of Skukum Lake 1N., 6W.	1914	--	Veinlets of asphalt found in rocks of Nestucco age. (Washburne, 1914)
UMATILLA COUNTY					
Big Red Uranium	Richartz No. 1	Milton-Freewater. NW $\frac{1}{4}$ sec. 24, 6N., 34E. Elev. 640' Gr.	1958	340'	Coble tools. Recent alluvium. (Dept. files)
Rockwell, Guy	?	Pendleton area. Sec. 26, 1N., 32E. Elev. 1430'.	?	2000'±	(Hogenson, 1957)
UNION COUNTY					
Grand Ronde Oil & Gas Co.	Davis No. 1	Near Hot Lake. SW $\frac{1}{4}$ sec. 36, 3N., 39E. Elev. 2750'.	1944- 1945	300'±	(McCusker)
WASCO COUNTY					
Beavis May Oil Co.	?	10 miles west of Dufur on Ramsey Creek.	1907	1710'	(Buwaldo, 1921)
Beavis May Oil Co.	?	Approx. 200' from the 1907 well.	1919	1125'+	(Buwaldo, 1921)

COMPANY	WELL NAME	LOCATION AND ELEVATION	DATE	DEPTH	REMARKS
WASCO COUNTY, Continued					
Dufur Oil Co.	(5 holes)	5 miles west of Dufur on Fifteen-Mile Creek.	Before 1907	500'±	(Buwalda, 1921)
Kastle Oil & Gas Co.	Lambert No. 1	On Fifteen-Mile Creek, 11 miles southwest of Dufur. SE $\frac{1}{4}$ sec. 20, 2S., 12 E. Elev. 2400'.	1951- 1952	220'	Coble tools. (Dept. file)
WASHINGTON COUNTY					
Oregon Explo- rations	Wohler No. 1	Hillsboro area. NE $\frac{1}{4}$ sec. 11, 1S., 3W. 771'S. of N. line & 1650'W. of E. line. Elev. 210'.	1955	727'	Quaternary alluvium. No shows reported. (Dept. file)
Petroliferous Radiolarian shale.	Oil shale occurrence	Buxton area. Sec. 32, 3N., 4W.	1896	--	A radiolarian Miocene shale which gives a petroleum odor on fresh fracture. (Diller, 1896)
The Texas Co.	Redding- Gasnor No. 1	Cooper Mt. SE $\frac{1}{4}$ sec. 25, 1S., 2W. 583'S. & 844'W. from E $\frac{1}{4}$ cor. Elev. 783' Gr.	1945- 1946	9263'	Rotary. Small gas shows at 8694' and 8830'. Flowed salt water at 700' B/D rate on test from interval 7862-9263'. Bottomed in Tilla- mook Volcanics. (Dept. file)
WHEELER COUNTY					
Clarno area	Asphalt occurrence	Approximately Sec. 26, 7S., 19E.	1914	--	Geodes found containing asphalt. (Buwalda, 1914)
Clarno area	Asphalt occurrence	Sec. 34, 7S., 19E.	1952	--	Asphalt in geodes. (The ORE BIN, V. 14, no. 2, February 1952.)
Clarno Basin Oil Co.	Burgess No. 2	Clarno area. Center of SE $\frac{1}{4}$ sec. 34, 7S., 19E. Elev. 1650'.	1929- 1930	5000'	Cable tools. Deepened with rotary. Some gas sands encountered. Bot- tomed in metasediments. See gas analysis Table No. 1. (Dept. file)
Cooksie, J. Orbin	Schmitt- Bernece No. 1	Mitchell area. NW $\frac{1}{4}$ sec. 18, 11S., 22E. 3340'N. of S. line & 380'E. of W. line. Elev. 3100' Gr.	1950- 1951	1507'	Rotary. Metasediments below 820'. (Dept. file)
Huntley Ranch	Asphalt occurrence	Mouth of Cove Creek, Sec. 31, 7S., 20E.	1914	--	Asphalt lens in tuff. (Buwaldo, 1914)
John Day Valley Coal & Oil Co.	Miller No. 1	Near the town of Fossil. NW $\frac{1}{4}$ sec. 33, 6S., 21E. Elev. 3500'.	1928- 1930	2582'	Coble tools. (Dept. file)
Northwest Petrol. Co.	Well No. 1	NE $\frac{1}{4}$ sec. 23, 11S., 21E. Elev. 3000'.	1934- 1935	2100'	Spud in Cretaceous.

COMPANY	WELL NAME	LOCATION AND ELEVATION	DATE	DEPTH	REMARKS
WHEELER COUNTY, Continued					
Oregon Petrol. Corp.	Clarno No. 1	Clarno area. SE $\frac{1}{4}$ sec. 27, 7S., 19E. 73'W & 711'N. from SE. cor. Elev. 2300'.	1957	4250'	Rotary. Bottomed in metasediments. (Dept. file)
Wilder, S. A.	?	Fossil area. SE $\frac{1}{4}$ sec. 25, 7S., 19E. Elev. 2360'.	1941	810'	Cable tools (McCusker)
?	"Fossil Well"	Approx. $\frac{1}{4}$ mile south of the town of Fossil. Sec. 8, 7S., 21E. Elev. 3520'.	1927- 1928	1600' \pm	Core rig. (Dept. file)
YAMHILL COUNTY					
Churchill, A.C. & Associates	?	Newberg area. Approx. 6 miles west of town on the Helen Follett Farm.	1902	1240'	Possibly the first oil drilling in the state. Some non-inflammable gas reported. Smelled of sulfur. (Washburne, 1914)
Churchill, A. C. & Associates	?	Located approximately 10' from first hole.	1902	1287	Some gas reported at 1100' which smelled strongly of sulfur. Salt water hit at 600'. (Washburne, 1914)
McKee, Robert	Water well	McCoy area. NW $\frac{1}{4}$ sec. 6(?), 6S, 4W.	?	2400'	Flowed salt water from lower part of the hole. Some fresh water near the top of the hole. (Washburne, 1914)
Resettle- ment Admin.	Water well	Amity area. SW $\frac{1}{4}$ sec. 32, 5S., 4W. Elev. 230'.	1937	125'	Salt water with a small amount of gas between 110' and 125'.

TABLE 1...GAS ANALYSES

COMPANY	WELL	LOCATION	ANALYSES						
			Methane	Ethane	Heavy Fract.	Nitrogen	Carb. Diox.	Hydrogen	Oxygen
Boyer, A. F.	Water well	SE $\frac{1}{4}$ sec. 9, 18 S., 47 E. Malheur County	99.1	-	-	0.90	-	-	-
Browns Dairy Farm	Slough	Sec. 26, 8N., 10W. Clatsop County	95.5	-	-	1.00	3.5	-	-
Carter Ranch	Water well	Approx. 9 miles south of Lakeview, 40S., 19E. Lake County	73.5	-	-	26.00	0.5	-	-
Clarno Basin Oil Co.	Burgess No. 2	SE $\frac{1}{4}$ sec. 34, 7S., 19E. Wheeler County	64.3	4.7	-	28.7	3.1	-	0.2
Freel, Frank	Water well	Sec. 14, 21S., 46E. Malheur County	88.6	-	-	10.8	0.4	-	0.2
Gray, Lona	Berna No. 1	NE $\frac{1}{4}$ sec. 32, 19S., 18E. Crook County	98.5	1.5	-	-	-	-	-
Gulf Oil Corp.	Porter No. 1	NE $\frac{1}{4}$ sec. 27, 13S., 4W. Linn County	1.4	-	-	98.3	0.1	-	0.2
Herrick Mineral Spring	-	Nehalem River area. SE $\frac{1}{4}$ sec. 23, 8N., 7W. Clatsop County	87.0	-	-	12.50	0.50	-	-
Lowen Store(?)	Water well	25S., 32 $\frac{1}{2}$ E. Harney County	91.3	-	-	6.7	-	1.5	0.5
Lease Holding Syndicate	Dutch Canyon well	NW $\frac{1}{4}$ sec. 17, 3N., 2W. Columbia County	7.87	-	-	91.75	0.5	-	0.33
Lewis, Marvin	Crossley- Jennings 1	NE $\frac{1}{4}$ sec. 31, 6S., 4W.	57.0	-	-	43.0	-	-	-
Linn County Oil Devel. Co.	Barr No. 1	NW $\frac{1}{4}$ sec. 32, 11 S., 1W. Linn County	48.0	0.8	0.3	50.4	0.5	-	-

GAS ANALYSES - TABLE 1 Continued

COMPANY	WELL	LOCATION	ANALYSES						
			Methane	Ethane	Heavy Fract.	Nitrogen	Corb. Diox.	Hydrogen	Oxygen
Miller, J. T.	Adams No. 2	SW $\frac{1}{4}$ sec. 11, 8S., 5W. Polk County	33.2	-	-	65.4	0.1	-	1.3
Mitchell Ross R.	Bliven No. 1	NW $\frac{1}{4}$ sec. 15, 8S., 5W. Polk County	63.8	-	-	36.1	-	-	0.1
Moehnke, Wolter	Water well	SE $\frac{1}{2}$ sec. 13, 5S., 2E. Clackamas County	-	-	-	93.4	1.0	4.7	-
Ontario Cooperative Gas & Oil Co.	?	In Ontario. 18S., 47E. Malheur County	99.1	-	-	0.9	-	-	-
Oregon Oil & Gas Co.	Roberts No. 1	NE $\frac{1}{4}$ sec. 25, 10S., 8W. Lincoln County	56.5	-	-	42.99	0.08	-	0.43
Pacific Petrol. Co.	Morrison No. 1	NW $\frac{1}{2}$ sec. 28, 28S., 14W.	99.4	0.5	0.13	-	-	-	-
Pacific Pwr. & Light Co.	North Bend Steam plant water well	SE $\frac{1}{2}$ sec. 15, 25S., 13W. Coos County	97.2	0.2	0.2	2.4	-	-	(0.04 argon)
Portland Cool & Devel. Co.	?	SW $\frac{1}{4}$ sec. 10, 2S., 9W. Tillamook County	97.85	-	-	2.00	0.15	-	-
Reserve Oil & Gas Co.	Esmond No. 1	SW $\frac{1}{4}$ sec. 7, 12S., 1W. Linn County	77.2	3.7	2.2	16.8	-	-	0.1
Riddle, H. K.	Kiesel Estate	SW $\frac{1}{2}$ sec. 8, 19W., 47E. Malheur County	96.5	1.0	-	2.5	-	-	-
Riggs, Coss	Water well	SE $\frac{1}{2}$ sec. 6, 7S., 4W. Lake County	67.0	6.4	-	26.4	-	-	Tr.
Silver Falls	-	Silver Falls oreo, 9S., 3E. Marion County	88.3	-	-	2.5	7.6	0.4	0.8

GAS ANALYSES - TABLE 1 Continued

<u>COMPANY</u>	<u>WELL</u>	<u>LOCATION</u>	<u>ANALYSES</u>						
			Methane	Ethane	Heavy Fract.	Nitrogen	Carb. Diox.	Hydrogen	Oxygen
Stork, Ralph (Tri-State Petroleum)	Fisher No. 1	SW $\frac{1}{4}$ sec. 22, 40S., 19E. Lake County	90.33	0.96	-	8.41	0.3	-	-
Texaco, Inc.	Potter 1 (C. H.)	NW $\frac{1}{4}$ sec. 8, 4N., 3W. Columbia County	51.8	-	-	46.7	0.4	0.2	0.2
Vey, A. J.	Water well	Sec. 24, 1N., 27E. Morrow County	87.1	-	-	11.9	0.1	-	0.9
Wells Springs	-	Wells Springs, 2N., 25E. Morrow County	91.0	-	-	7.8	-	-	2.0
Wilson Farm	Water well	Sec. 3, 28S., 7W. Douglas County	73.7	-	-	24.7	0.4	-	1.2
Nehalem River bed	Seep	SW $\frac{1}{4}$ sec. 7, 4N., 7W. Clatsop County	86.2	-	-	13.10	0.70	-	-

TABLE 2...WATER ANALYSES

COMPANY	WELL	LOCATION	DEPTH	ANALYSIS (ppm)									
				Co	Mg	Na	K	CO ₃	HCO ₃	SO ₄	Cl	Li	I
Gulf Oil Corp.	Porter No. 1	NE $\frac{1}{4}$ sec. 27, 13S., 4W. Linn County	3,800'	4,794	0	2,440	6	0	98	0	12,200	1	-
Humble Oil & Ref. Co.	Miller No. 1	SE $\frac{1}{4}$ sec. 10, 10S., 3W. Linn County	2,400'	4,570	37	2,700	10	0	16	31	11,870	-	10
Lease Holding Syndicate	"Dutch Canyon"	NW $\frac{1}{4}$ sec. 17, 3N., 2W. Columbia County	4,100'	1,610	24	8,340	28	0	16	4.4	15,200	-	-
Lewis, Morvin	Crossley-Jennings 1	NE $\frac{1}{4}$ sec. 31, 6S, 4W Polk County	5,549'	1,370	309	9,800	33	4,690	52	7	18,800	-	20
Linn County Oil Dev. Co.	Barr No. 1	NW $\frac{1}{4}$ sec. 32, 11S., 1W. Linn County	2,230'	-	-	-	-	-	-	-	13,245	-	-
Oregon Oil & Gas Co.	Roberts No. 1	NE $\frac{1}{4}$ sec. 25, 10S., 8W. Lincoln County	2,160'	-	-	-	-	-	-	-	13,100	-	-
Reserve Oil & Gas.	Esmond No. 1	SW $\frac{1}{4}$ sec. 7, 12S., 1W. Linn County	7,100'	8,430	305	4,400	40	0	100	181	21,460	-	5
Sunray-Mid-Cont. Oil Co.	Kappler No. 1	NW $\frac{1}{4}$ sec. 12, 2N., 2W Multnomah County	1,600'	-	-	-	-	-	-	-	28,900	-	-
Texaco, Inc.	Clark & Wilson No. 1	NE $\frac{1}{4}$ sec. 19, 6N., 4W. Columbia County	8,000'	-	-	-	-	-	-	-	17,400	-	-
Texaco, Inc.	Cooper Mt. No. 1	SE $\frac{1}{4}$ sec. 25, 1S., 2W. Washington County	8,000'	15,900	10.5	4,180	75	0	28.1	25.2	35,490	-	-

Bibliography and Selected References

- Allen, J. E., and Baldwin, E. M., 1944, Geology and coal resources of the Coos Bay quadrangle, Oregon: Oregon Dept. Geology and Mineral Industries Bull. 27.
- Baldwin, E. M., 1955, Geology of the Marys Peak and Alsea quadrangles, Oregon: U.S. Geol. Survey Map OM-162.
- _____, 1956, Geologic map of the lower Siuslaw River area, Oregon: U.S. Geol. Survey map OM-186.
- _____, 1964a, Geology of the Dallas and Valsetz quadrangles, Oregon: Oregon Dept. Geology and Mineral Industries Bull. 35, rev.
- _____, 1964b, The Geology of Oregon: University of Oregon Cooperative Bookstore, Eugene, Oregon, 2nd ed.
- _____, 1964c, Thrust faulting in the Roseburg area, Oregon: Oregon Dept. Geology and Mineral Industries The ORE BIN, vol. 26, no. 10, October 1964.
- Baldwin, E. M., and Roberts, A. E., 1952, Geology of the Spirit Mt. quadrangle, northwestern Oregon: U.S. Geol. Survey Map OM-129.
- Baldwin, E. M., and others, 1955, Geology of the Sheridan and McMinnville quadrangles, Oregon: U.S. Geol. Survey Map OM-155.
- Ball, M. W., 1916, Petroleum withdrawals and restorations affecting public land: U.S. Geol. Survey Bull. 623.
- Beck, R. S., 1946, Highlights of Washington and Oregon biostratigraphy [abs.]: Am. Assoc. Petroleum Geologists Bull., vol. 30, no. 12, December 1946.
- Bell, R. N., 1908, Ninth annual rept. of the mining industry of Idaho for the year 1907 (picture of a gas blow-out opposite p. 92).
- Blank, R. H., Jr., 1964, Southwest Oregon gravity data: U.S. Geol. Survey open-file rept.
- Bromery, R. W., 1965, Aeromagnetic map of the Albany-Newport area, Oregon and its geological interpretation: U.S. Geol. Survey Map GP 481.
- Bromery, R. W., and Snively, P. D., Jr., 1964, Geologic interpretation of reconnaissance gravity and aeromagnetic surveys in northwestern Oregon: U.S. Geol. Survey Bull. 1181-M,N.
- Buddenhagen, H. J., 1950, A symposium of possible future oil provinces of the Pacific Coast region: Am. Assoc. Petroleum Geologists Bull., vol. 34, no. 12, December 1950 (abst. of talk given at the Pacific Coast section meeting. This abstract was also published in The ORE BIN, vol. 13, no. 2, February 1951).
- _____, 1951, Possible future petroleum provinces of North Am. Pacific Coast states and Nevada: Am. Assoc. Petroleum Geologists Bull., vol. 35, no. 2, February 1951.
- Buwalda, J. P., 1921, Report on oil and gas possibilities of eastern Oregon: Oregon Bur. Mines and Geology, Mineral resources of Oregon, vol. 3, no. 2, July 1921.
- _____, 1923, A prelim. reconnaissance of the gas and oil possibilities of southwestern and south-central Idaho: Idaho Bur. Mines and Geology Pamph. No. 5, July 1923.
- Byrne, J. V., 1962, Geomorphology of the continental terrace off the central coast of Oregon: The ORE BIN, vol. 24, no. 5, May 1962.
- _____, 1963, Geomorphology of the Oregon continental terrace south of Coos Bay: The ORE BIN, vol. 25, no. 9, September 1963.
- _____, 1963, Geomorphology of the continental terrace off the northern coast of Oregon: The ORE BIN, vol. 25, no. 12, December 1963.
- Collier, A. J., 1914, The geology and mineral resources of the John Day region: Oregon Bur. Mines and Geology Mineral resources of Oregon, vol. 1, no. 3, March 1914.
- Corcoran, R. E., 1954, The Payette and Idaho formations: The ORE BIN, vol. 16, no. 12, December 1954.
- _____, 1956, Sedimentary basins in Oregon: World Oil, vol. 143, no. 5, October 1956.
- _____, 1965, Geology of the Lake Owyhee State Park and vicinity, Malheur County, Oregon: The ORE BIN, vol. 27, no. 5, May 1965.
- Corcoran, R. E., Doak, R. A., Porter, P. W., Pritchett, F. I., and Privrasky, N. C., 1962, Geologic map of the Mitchell Butte quadrangle: Oregon Dept. Geology and Mineral Industries map.
- Cushman, J. A., Stewart, R. E., and Stewart, K. C., 1949a, Upper Eocene foraminifera from the Toledo formation, Lincoln County, Oregon: Oregon Dept. Geology and Mineral Industries Bull. 36, Part VI.
- _____, 1949b, Quinalt Pliocene foraminifera from western Washington: Oregon Dept. Geology and Mineral Industries Bull. 36, Part VII.
- Day, D. T., 1909, The petroleum resources of the United States: U.S. Geol. Survey Bull. 394.
- Deacon, R. J., 1959-1965, Northwest Oil Report: Oil Scouting Service, Portland, Oregon.
- _____, 1960, Exploration in the Pacific Northwest: Western Oil Refining, vol. 57, no. 11, November 15, 1960.
- _____, 1962, Pacific Northwest headed for active year: The Oil and Gas Journal, March 26, 1962.

- Diller, J. S., 1896, A geologic reconnaissance of northwestern Oregon: U.S. Geol. Survey Seventeenth Annual Rept., Part I.
- _____, 1898, The Roseburg Folio: U.S. Geol. Survey, Geologic Atlas of the United States, Folio No. 49.
- _____, 1901, The Coos Bay Folio: U.S. Geological Survey, Geologic Atlas of the United States, Folio No. 73.
- _____, 1903, The Port Orford Folio: U.S. Geological Survey, Geologic Atlas of the United States, Folio No. 89.
- _____, 1914, Mineral resources of southwestern Oregon: U.S. Geol. Survey Bull. 546.
- Diller, J. S., and Koy, G. F., 1924, The Riddle Folio: U.S. Geol. Survey, Geologic Atlas of the United States, Folio No. 218.
- Dole, H. M., 1954, Oil leasing in Oregon increases: The ORE BIN, vol. 16, no. 12, December, 1954.
- Dole, H. M., and Corcoran, R. E., 1954, Reconnaissance geology along Highway 20 between Vale and Buchanan, Malheur and Harney Counties, Oregon: The ORE BIN, vol. 16, no. 6, June 1954.
- Dott, R. H., Jr., 1962, Geology of the Cape Blanco area, southwest Oregon: The ORE BIN, vol. 24, no. 8, August, 1962.
- Drilling International Magazine, 1961, Industry views Oregon's offshore prospects: Dallas, Texas, Assoc. Publishers, Inc., vol. 22, no. 11, August 1961.
- _____, 1964, Activity increasing in the Northwest: Dallas, Texas, Assoc. Publishers, Inc., August, 1964.
- Duncan, D. C., 1953, Geology and coal deposits in part of the Coos Bay coal field, Oregon: U.S. Geol. Survey Bull. 982-B.
- Engineering and Mining Journal, 1909, The Malheur oilfields of Oregon: Engineering and Mining Journal, vol. 88, September 11, 1909.
- Felts, W. M., 1954, Occurrence of oil and gas and its relations to possible source beds in continental Tertiary intermountain regions: Am. Assoc. Petroleum Geologists Bull., vol. 38, no. 8, August 1954.
- Hampton, E. R., 1964, Geologic factors that control occurrence and availability of ground water in the Fort Rock basin, Lake County, Oregon: U.S. Geol. Survey Prof. Paper 383-B.
- Harrison and Eaton, consultants, 1920, Investigations of oil and gas possibilities of western Oregon: Oregon Bur. Mines and Geology, Mineral resources of Oregon, vol. 3, no. 1.
- Hart, D. H., and Newcomb, R. C., 1965, Geology and ground water of the Tualatin Valley, Oregon: U.S. Geol. Survey Water-supply Paper 1697.
- Hergert, H. L., 1961, Plant fossils in the Clarno formation, Oregon: The ORE BIN, vol. 23, no. 6, June, 1961.
- Hill, B., 1908, Mineral resources of the United States for the calendar year 1907: U.S. Geol. Survey, Part II, 1908.
- _____, 1909, Mineral resources of the United States for the calendar year 1908: U.S. Geol. Survey, Part II, 1909.
- _____, 1910, Mineral resources of the United States for the calendar year 1909: U.S. Geol. Survey, Part II, 1910.
- Hodge, E. T., 1927, Native asphalt in Oregon: Am. Assoc. Petroleum Geologists Bull., vol. 11, no. 4, April, 1927.
- _____, 1942, Geologic map of north-central Oregon: Oregon State College Studies in Geology, Mon. No. 3.
- Hogenson, G. M., 1957, Geology and ground-water resources of the Umatilla River basin area, Oregon: U.S. Geol. Survey open-file report, March 1957.
- Hogenson, G. M., and Foxworthy, B. L., 1965, Ground water in the east Portland area, Oregon: U.S. Geol. Survey Water-supply Paper 1793.
- Hoover, Linn, 1963, Geology of the Anlauf and Drain quadrangles, Douglas and Lane Counties, Oregon: U.S. Geol. Survey Bull. 1122-D.
- Howard, J. K., and Dott, R. H., Jr., 1961, Geology of the Cape Sebastian State Park and its regional relationships: The ORE BIN, vol. 23, no. 8, August 1961.
- Hudson, F. S., 1927, Occurrence of oil in basalt in southwestern Washington: Am. Assoc. Petroleum Geologists Bull., vol. 11, no. 1, January 1927.
- Kellogg, A. E., 1920, Oil prospects in the Rogue River valley, Oregon: Eng. Mining Jour., vol. 109, no. 12, March 20, 1920.
- _____, 1921, Oil developments in the Rogue River valley, Oreg.: Eng. Mining Jour., vol. 111, no. 2, May 28, 1921.
- Koch, J. G., Kaiser, W. R., and Dott, R. H., Jr., 1961, Geology of the Humbug Mt. State Park area, Oreg.: The ORE BIN, vol. 23, no. 3, March 1961.
- Levorsen, A. I., 1941, Possible future oil provinces of the United States and Canada, a symposium: Am. Assoc. Petroleum Geologists Bull., vol. 25, no. 8, December, 1941.
- Ley, H. A., 1935, Geology of natural gas, a symposium: Am. Assoc. Petroleum Geologists Publication, June, 1935.
- Libbey, F. W., 1947, Gas and oil prospecting in Oregon: Am. Assoc. State Geologists Journal, October 15, 1957 (reprinted in The ORE BIN, vol. 9, no. 11, November 1947).
- Lupher, R. L., 1941, Jurassic stratigraphy of central Oregon: Geol. Soc. America Bull., vol. 52, no. 2.
- MacKay, D. K., 1938, Geologic report on part of the Clarno basin, Wheeler and Wasco Counties, Oregon: Oregon Dept. Geology and Mineral Industries Bull. 5.
- Moloney, N. J. and Byrne, J. V., 1964, Sedimentary rocks from the continental shelf and slope off the central Oregon coast: The ORE BIN, vol. 26, no. 5, May 1964.
- McBride, R. S., and Sievers, E. G., 1924, Mineral resources of the United States for the calendar year 1921: U.S. Geol. Survey, Part II, 1924.

- McCusker, J. R., 1937-1957, The Northwest Scouting Service: Oil inf. service, Portland, Oregon.
- McKittrick, W. E., 1934, The geology of the Supplee Paleozoic series of central Oregon: Oregon State College master's thesis.
- Merriam, J. C., 1928, Petroleum geology of the Pliocene in the Pacific Coast and Great Basin regions [abs.]: Pan Amer. Geologist, vol. 45.
- Merriam, J. C., and Berthiaume, S. A., 1943, Late Paleozoic formations in central Oregon: Geol. Soc. America Bull., vol. 54, no. 2.
- Moore, R. C., and Vokes, H. E., 1953, Lower Tertiary crinoids from northwestern Oregon: U.S. Geol. Survey Prof. Paper 233-E.
- Napper, J. E., 1958, The geology of the northern two-thirds of the Courtrock quadrangle, Oregon: Univ. Oregon master's thesis.
- Newcomb, R. C., and Hart, D. H., 1958, Preliminary report on the ground-water resources of the Klamath River basin, Oregon: U.S. Geol. Survey open-file report, July 1958.
- Newton, V. C., Jr., 1963, Despite 60 years of dry holes, Oregon drilling continues: Oil and Gas Jour., March 11, 1963.
- _____, 1963, Available well records of oil and gas exploration in Oregon: Oregon Dept. Geology and Mineral Industries Misc. Paper No. 8.
- _____, 1965, Natural gas and petroleum products pipelines in the Northwest: The ORE BIN, vol. 27, no. 8, August 1965.
- Newton, V. C., Jr., and Corcoran, R. E., 1963, Petroleum geology of the western Snake River basin, Oregon-Idaho: Oregon Dept. Geology and Mineral Industries Oil and Gas Investigations No. 1.
- Newton, V. C., Jr., and Newhouse, C. J., 1964, Oil leasing on the outer continental shelf adjacent to Oregon and Washington: The ORE BIN, vol. 26, no. 11, November 1964.
- Northrop, J. D., 1916, Mineral resources of the United States for the calendar year 1914: U.S. Geol. Survey, Part II, 1916.
- Offshore Magazine, 1964, Lease sale nets \$35.5 million: Offshore Magazine, Industrial Trade Pubs., Conroe, Texas, November, 1964.
- _____, 1965, Drilling set off Pacific Northwest: Offshore Magazine, Industrial Trade Pubs., Conroe, Texas, June 21, 1965.
- Oil and Gas Journal, 1960, Oregon has hopes but no production: Oil and Gas Journal, The Petroleum Pub. Co., Tulsa Okla., vol. 58, no. 9, February 29, 1960.
- _____, 1963, Deep oil prospects of tomorrow: Oil and Gas Journal, The Petroleum Pub. Co., Tulsa, Okla., March 18, 1963.
- _____, 1964, Oregon nearing decision on leasing its offshore area: Oil and Gas Journal, The Petroleum Pub. Co., Tulsa, Okla., vol. 62, no. 30, July 27, 1964.
- Oregon Dept. Geology and Mineral Industries, 1962, Petroleum exploration in Oregon: Oregon Dept. Geology and Mineral Industries Misc. Paper 9 (reprints of magazine articles).
- _____, 1962, Rules and regulations for the conservation of oil and natural gas and laws relating to development of oil and gas minerals: Oregon Dept. Geology and Mineral Industries Misc. Paper 4, 2nd rev.
- _____, 1962, Nehalem wax gets carbon 14 date: The ORE BIN, vol. 24, no. 1, January 1962.
- _____, 1962, What it takes to drill for oil: The ORE BIN, vol. 24, no. 6, June, 1962 (reprinted from "Our Sun," A Sun Oil Co. pub.).
- _____, 1964, Oil companies bid on Oregon's offshore: The ORE BIN, vol. 26, no. 10, October 1964.
- Parks, H. M., 1912, The economic geological resources of Oregon: Oregon Bur. Mines, Agri. Ext. Service Bull. series 5, no. 2 (Picture of burning gas well opposite page 23).
- Peck, D. L., 1961, Geologic map of Oregon west of the 121st meridian: U.S. Geol. Survey map I-325.
- Peterson, N. V., 1958, Limestone occurrences in western Oregon: The ORE BIN, vol. 20, no. 4, April 1958.
- Piper, Arthur M., 1942, Ground-water resources of the Willamette Valley, Oregon: U.S. Geol. Survey Water-supply Paper 890.
- Piper, A. M., Robinson, T. W., and Park, C. F., 1939, Geology and ground-water resources of the Harney Basin, Oregon: U.S. Geol. Survey Water-supply Paper 841.
- Ralph, H. D., 1954, Biggest gas deal in history: Oil and Gas Jour., December 20, 1954.
- Reed, Paul, 1961, Alberta-California pipeline system: Oil and Gas Jour., March 13, 1961.
- Robinson, J. W., 1947, Ground water in the Prineville area, Oregon: U.S. Geol. Survey open-file rept.
- Russell, I. C., 1903, Geology of southwestern Idaho and southeastern Oregon: U.S. Geol. Survey Bull. 217.
- Schafer, Max, 1955, Occurrence and utilization of carbon dioxide-rich water near Ashland, Oregon (Umpqua Formation): The ORE BIN, vol. 17, no. 7, July 1955.
- Schlicker, H. G., 1962, The occurrence of Spencer sandstone in the Yamhill quadrangle, Oregon: The ORE BIN, vol. 24, no. 11, November 1962 (porosities and permeabilities given).

- Schlicker, H. G., and Dole, H. M., 1957, Reconnaissance geology of the Marcola, Leaburg, and Lowell quadrangles, Oregon: The ORE BIN, vol. 19, no. 7, July 1957.
- Snively, P. D., Jr., Rau, W. W., and Wagner, H. C., 1964, Miocene stratigraphy of the Yaquina Bay area, Newport, Oregon: The ORE BIN, vol. 26, no. 8, August 1964.
- Snively, P. D., Jr., and Vokes, H. E., 1949, The coastal area between Cape Kiwanda and Cape Foulweather, Oregon: U.S. Geol. Survey map OM-97.
- Snively, P. D., Jr., and Wagner, H. C., 1963, Tertiary geologic history of western Oregon and Washington: Wash. State Div. Mines and Geology Rept. Inv. No. 22.
- _____, 1964, Geologic sketch of northwestern Oregon: U.S. Geol. Survey Bull. 1181-M.
- Snively, P. D., Jr., Wagner, H. C., and MacLeod, N. S., 1965, Preliminary data on compositional variations of Tertiary volcanic rocks in the central part of the Oregon Coast Range: The ORE BIN, vol. 23, no. 6, June 1965.
- Smith, W. D., 1924, Petroleum possibilities of western Oregon: Econ. Geology, vol. 19, no. 5, August 1924.
- _____, 1925, Physical and economic geography of Oregon: Oregon Univ. Commonwealth Review, vol. 7, no. 4, October 1925.
- _____, 1926, Physical and economic geography of Oregon: Oregon Univ. Commonwealth Review, vol. 8, no. 2, April 1926.
- _____, 1926, Physical and economic geography of Oregon: Oregon Univ. Commonwealth Review, vol. 8, no. 3, July 1926.
- Stafford, O. F., 1904, The mineral resources and mineral industry of Oregon for 1903: Oregon Univ. Bull., vol. 1, no. 4.
- _____, 1908, The wax of Nehalem Beach: Oregon Historical Society Quarterly, vol. 9, no. 1, March 1908.
- Steere, Margaret L., 1954a, Fossil localities of Lincoln County beaches, Oregon: The ORE BIN, vol. 16, no. 4, April 1954.
- _____, 1954b, Geology of the John Day country, Oregon: The ORE BIN, vol. 16, no. 7, July 1954.
- _____, 1955, Fossil localities in the Coos Bay area, Oregon: The ORE BIN, vol. 17, no. 6, June 1955.
- _____, 1957, Fossil localities of the Sunset Highway area, Oregon: The ORE BIN, vol. 19, no. 5, May 1957.
- _____, 1958, Fossil localities of the Eugene area, Oregon: The ORE BIN, vol. 20, no. 6, June 1958.
- _____, 1959, Fossil localities of the Salem-Dallas area: The ORE BIN, vol. 21, no. 6, June 1959.
- Stewart, R. E., 1956a, Stratigraphic implications of some Cenozoic formations from western Oregon: The ORE BIN, vol. 18, no. 1, January 1956.
- _____, 1956b, Stratigraphic implications of some Cenozoic formations from western Oregon - Oligocene: The ORE BIN, vol. 18, no. 7, July 1956.
- _____, 1957, Stratigraphic implications of some Cenozoic formations from western Oregon - Eocene: The ORE BIN, vol. 19, no. 2, February 1957.
- Stoval, D. H., 1908, Discoveries of oil in Oregon: Mining World, vol. 29, December 12, 1908.
- Thayer, T. P., 1956, Preliminary map of the Aldrich Mountain quadrangle, Oregon: U.S. Geol. Survey map MF-49.
- _____, 1956, Preliminary map of the Mount Vernon quadrangle, Oregon: U.S. Geol. Survey map MF-50.
- _____, 1956, Preliminary map of the John Day quadrangle, Oregon: U.S. Geol. Survey map MF-51.
- Van Ostrand, C. E., 1938, Temperatures in the lava beds of east-central and south-central Oregon: Am. Jour. Sci., vol. 35, January 1938 (includes well data).
- Vokes, H. E., Myers, D. A., and Hoover, Linn, 1954, Geology of the west-central border area of the Willamette Valley, Oregon: U.S. Geol. Survey map OM-150.
- Vokes, H. E., Norbistrath, Hans, and Snively, P. D., Jr., 1948, Geology of the Newport-Waldport area, Lincoln County, Oregon: U.S. Geol. Survey map OM-88.
- Vokes, H. E., Snively, P. D., Jr., and Myers, D. A., 1951, Geology of the southern and southwestern border areas of the Willamette Valley, Oregon: U.S. Geol. Survey map OM-110.
- Wagner, N. S., 1954, Geology of the southern half of Umatilla County, Oregon: The ORE BIN, vol. 16, no. 3, March 1954.
- _____, 1958, Limestone occurrences in eastern Oregon: The ORE BIN, vol. 20, no. 5, May 1958.
- _____, 1958, Important rock units in northeastern Oregon: The ORE BIN, vol. 20, no. 7, July 1958.
- _____, 1959, Natural sources of carbon dioxide in Oregon: The ORE BIN, vol. 21, no. 11, November 1959.
- Walker, G. W., 1963, Reconnaissance geologic map of the eastern half of the Klamath Falls quadrangle (AMS), Lake and Klamath Counties, Oregon: U.S. Geol. Survey map MF-260.
- Wallace, R. E., and Calkins, J. A., 1956, Reconnaissance geologic map of the Ilee and Logdell quadrangles, Oregon: U.S. Geol. Survey map MF-82.
- Warren, W. C., and Norbistrath, Hans, 1946, Stratigraphy of the upper Nehalem River basin, northwestern Oregon: Am. Assoc. Petroleum Geologists Bull., vol. 30, no. 2.
- Warren, W. C., Norbistrath, Hans, and Grivetti, R. M., 1945, Geology of northwestern Oregon west of the Willamette River and north of latitude 45°15': U.S. Geol. Survey map OM-42.
- Waring, C. A., 1908, Geology and water resources of a portion of south-central Oregon: U.S. Geol. Survey Water-Supply Paper 220.
- _____, 1909, Geology and water resources of the Harney Basin region, Oregon: U.S. Geol. Survey Water-Supply Paper 231.

- Washburne, C. W., 1911, Gas and oil prospects near Vale, Oregon and Payette, Idaho, p. 26-55, and Gas prospects in Harney Valley, Oregon, p. 56-57: in U.S. Geol. Survey Bull. 431, Contributions to economic geology, Part II, Mineral fuels.
- _____, 1914, Reconnaissance geology and oil prospects of northwestern Oregon: U.S. Geol. Survey Bull. 590.
- Weaver, C. E., 1945, The geology of Oregon and Washington and its relation to the occurrence of oil and gas: Am. Assoc. Petroleum Geologists Bull., vol. 29, no. 10, October 1945.
- _____, 1945, Stratigraphy and paleontology of the Tertiary formations at Coos Bay, Oreg.: Washington Univ. Pub. in Geol., vol. 6, no. 2.
- Wells, F. G., 1940, Preliminary map of Grants Pass quad., Oreg.: Oregon Dept. Geology and Mineral Industries map, with text.
- _____, 1955, Preliminary geol. map of southwestern Oreg. west of meridian 122°W, and south of parallel 43°N: U.S. Geol. Survey map MF-38.
- _____, 1956, Geology of the Medford quad., Oreg.: U.S. Geol. Survey map GQ-89.
- Wells, F. G., Hotz, P. E., and Cater, F. W., Jr., 1949, Preliminary description of the geology of the Kerby quad., Oreg.: Oregon Dept. Geology and Mineral Industries Bull. 40.
- Wells, F. G., and Walker, G. W., 1953, Geology of the Golice quad., Oreg.: U.S. Geol. Survey map GQ-25.
- Wilkinson, W. D., 1940, Reconnaissance geologic map of the Round Mt. quad., Oreg.: Oregon Dept. Geology and Mineral Industries map, with text.
- _____, 1941, Reconnaissance geologic map of the Butte Falls quad., Oreg.: Oregon Dept. Geology and Mineral Industries map.
- Wilkinson, W. D., Lowry, W. D., and Baldwin, E. M., 1946, Geology of the St. Helens quad., Oreg.: Oregon Dept. Geology and Mineral Industries Bull. 31.

OIL AND GAS DRILLING IN OREGON

1965

DEPARTMENT OF GEOLOGY
AND MINERAL INDUSTRIES

Scale 0 5 10 20 30 40 50 Miles

