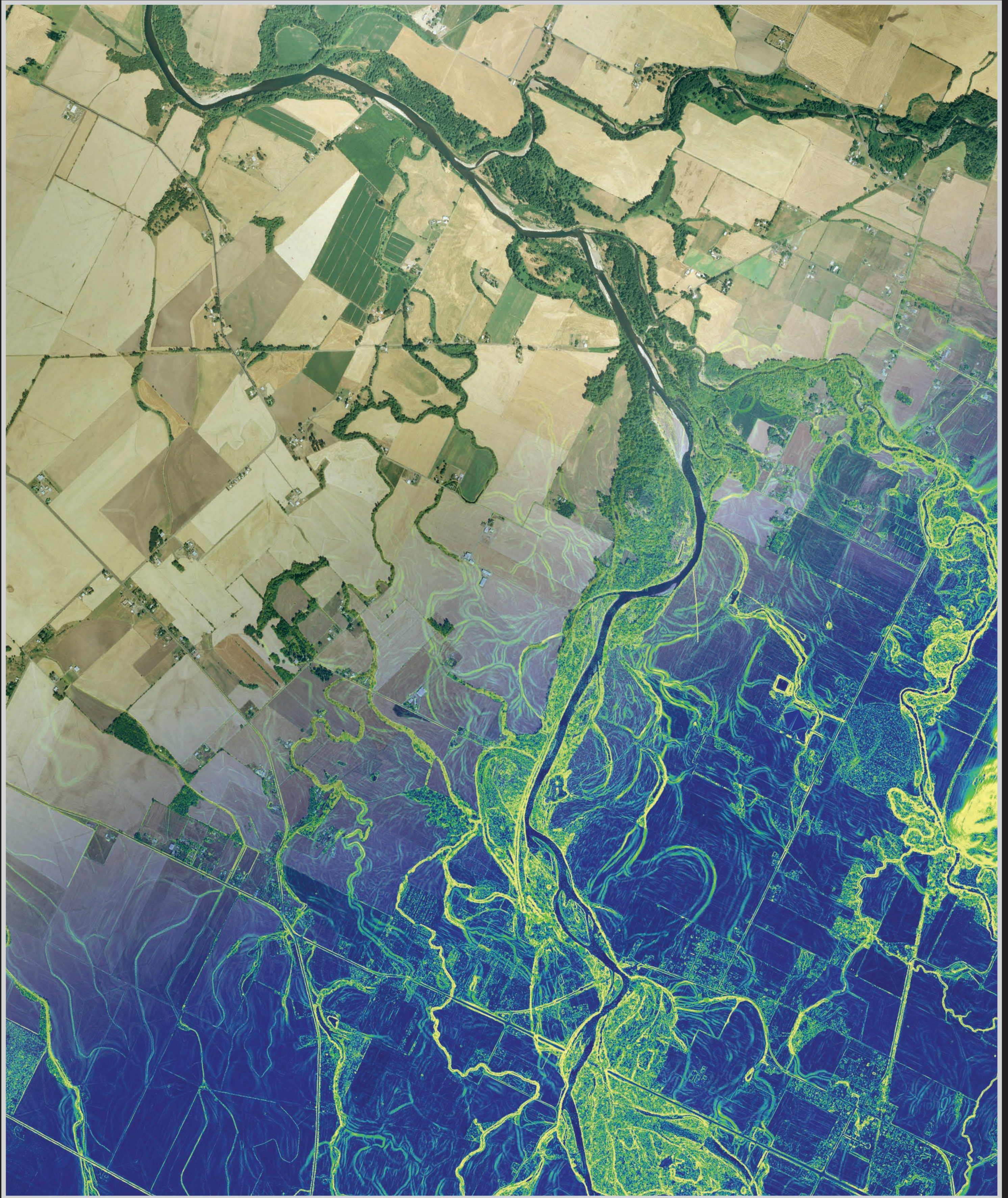


# South Santiam River, South of Jefferson, Oregon



## L I D A R

### Revealing Oregon's Dynamic Landscape



The South Santiam River and its multiple lateral and historic channels in Linn County, Oregon.  
For thousands of years, the Santiam River wandered widely across the Willamette Valley floor between Lebanon and Albany. Only in recent times have humans managed to confine it to a single course. This 3D enhanced image was created using a combination of lidar-derived shaded slope and aerial orthophotography.

**2010 Oregon Department of Geology and Mineral Industries** Lidar imagery and graphic design by Daniel Coe

