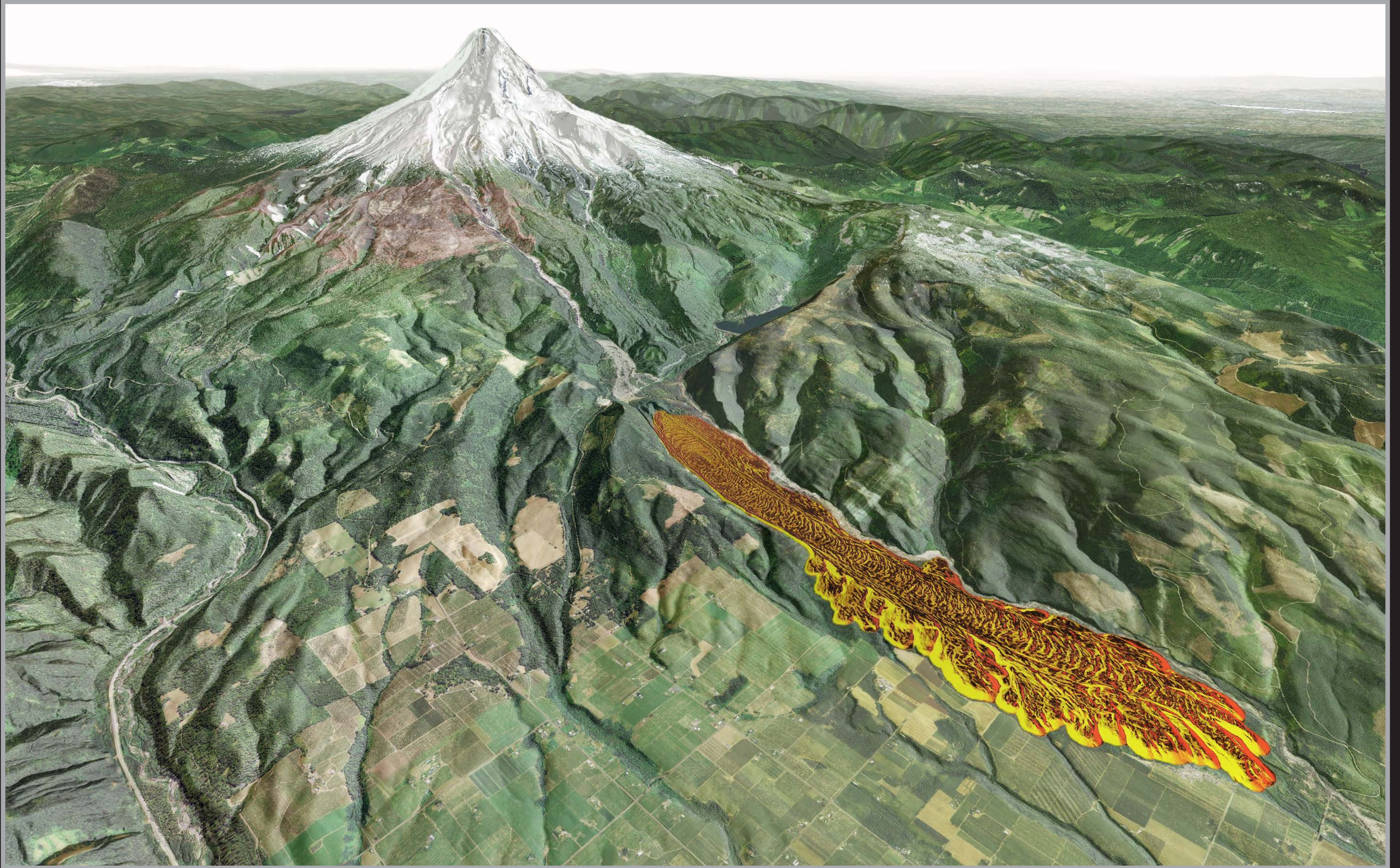


Mount Hood and the Parkdale Lava Flow, Parkdale, Oregon



L I D A R

Revealing Oregon's Dynamic Landscape

Mount Hood with the Parkdale Lava Flow on the mountain's northeast flank in Hood River County. This basaltic andesite flow occurred approximately 7,700 years ago. This 3D enhanced image was created using a combination of lidar-derived shaded relief and aerial orthophotography.

2010 Oregon Department of Geology and Mineral Industries Lidar imagery and graphic design by Daniel Coe

