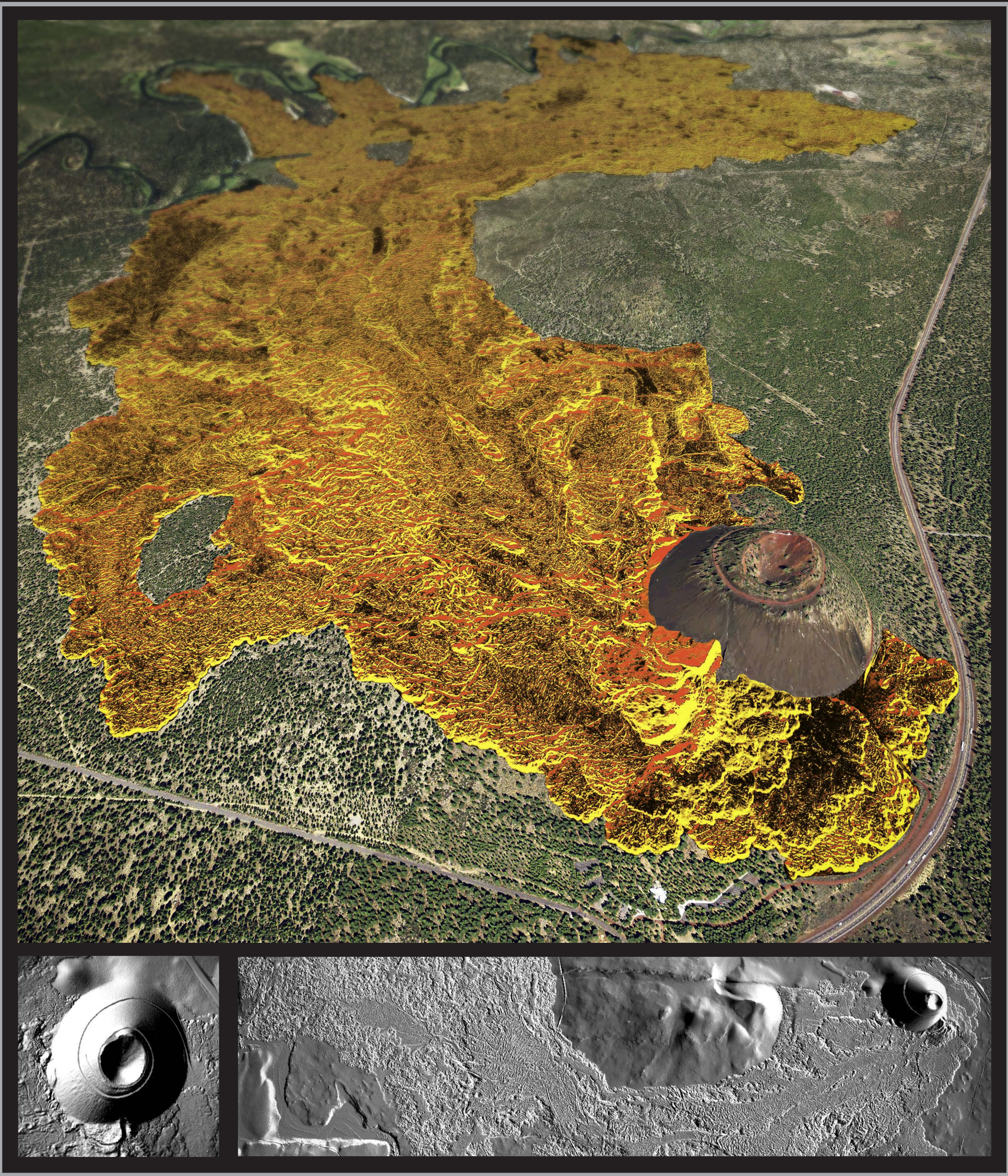


Lava Butte, Newberry Volcanic National Monument, Oregon



L I D A R

Revealing Oregon's Dynamic Landscape



Lava Butte and surrounding lava flow in Newberry Volcanic National Monument, Oregon. Lava Butte erupted about 7,000 years ago and the resulting lava flow covered approximately 9 square miles of land. The image at the lower left shows the road spiraling to the top of Lava Butte. The image at the lower right shows fault scarps which interrupted the lava flow at the upper right and constrained the Deschutes River at the lower left. These 3d enhanced images were created using a combination of lidar-derived shaded relief and aerial orthophotography.

2010 Oregon Department of Geology and Mineral Industries Lidar imagery and graphic design by Daniel Coe

