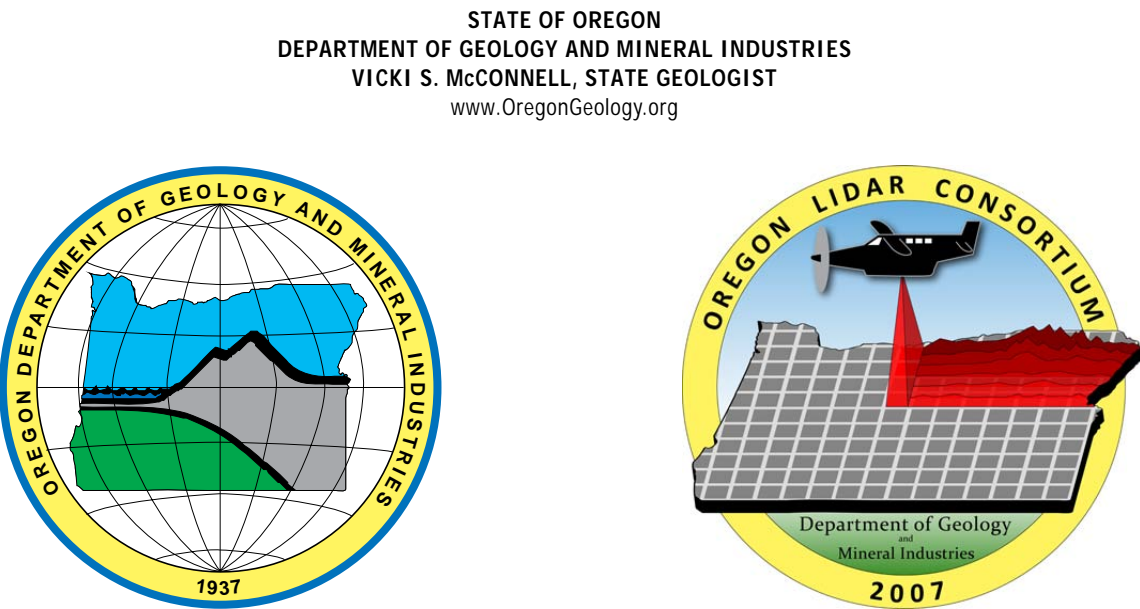


BARE EARTH HILLSHADE IMAGE

Lidar Imagery of the Southwest Quarter of the Lake Oswego 7.5' Quadrangle

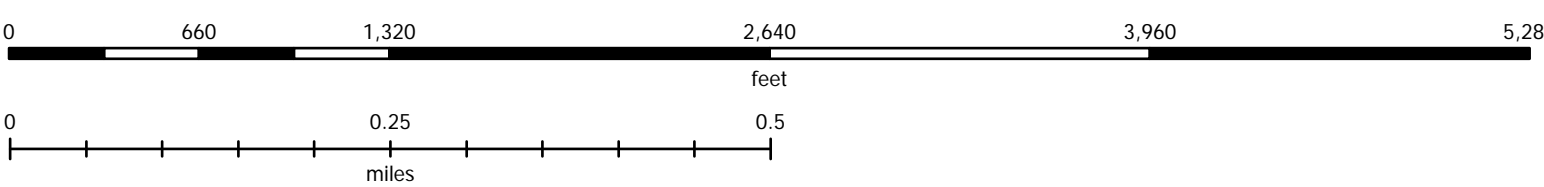
HIGHEST HIT HILLSHADE IMAGE



Lidar Imagery Series

LIS-2010-45122D6-Lake Oswego  
Lidar Imagery of the Lake Oswego 7.5' Quadrangle,  
Clackamas, Multnomah, and Washington Counties, Oregon

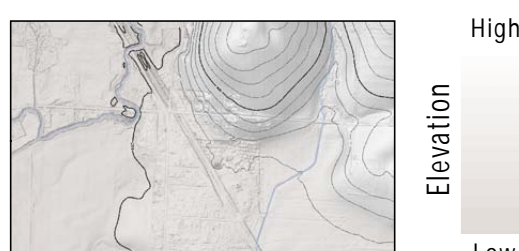
2010



Cartography by Ted Roberts and Sarah Robinson, Oregon Department of Geology and Mineral Industries. Additional cartography and data processing by John English, Rebecca Hughes, Matthew Tilman, and Rusty Hartz, Oregon Department of Geology and Mineral Industries.  
Data Source: Lidar data from DOGAMI and Puget Sound Lidar Consortium, Lidar flown 2004, 2009 and 2007.  
Hydrography features digitized from lidar data by DOGAMI. Feature names from Google Maps, U.S. Bureau of Land Management, U.S. Geological Survey, and ESRI.  
Contours derived from bare earth elevation model smoothed by 40' x 40' averaging kernel.  
Map projection: Universal Transverse Mercator Zone 10 North, North American Datum 1983.

Scale: 1:8,000  
1 inch = 667 feet  
Contour interval: 20 feet  
UTM grid: 1 kilometer  
Water Features

Bare Earth Image



The bare earth image is a representation of the earth's surface stripped of man-made objects and vegetation. This is achieved by post-processing lidar point data.

Highest Hit Image



The highest hit image is a representation of the landscape at the time of the lidar flight. Unlike the bare earth image, this image shows features such as trees, buildings, and even cars.

Lidar Data Origins and Map Image Limitations

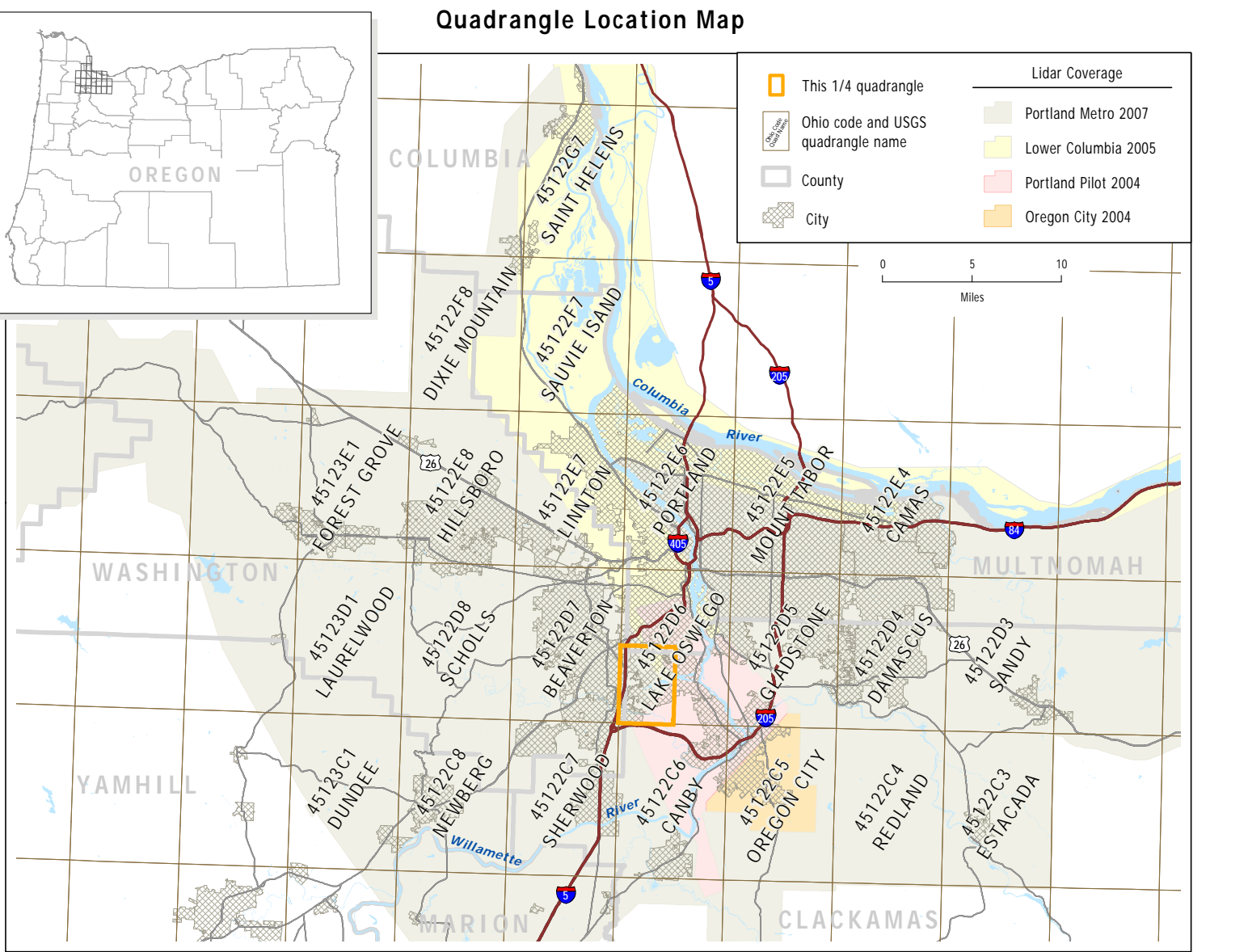
These maps were created using data derived from lidar (light detection and ranging) technology. A lidar measurement system collects huge quantities of three-dimensional point data where laser pulses have been reflected off opaque objects such as buildings, trees, bushes, and the ground surface.

The lidar all-returns point cloud data that are the original basis for these images were collected by Waterford Sciences Inc., Terrapoint, LLC, and Merrick and Company. The point cloud is a remotely sensed collection of three-dimensional point data that are systematically calibrated relative to GPS ground control points.

The services provided and map products produced by Waterford Sciences Inc. and Terrapoint, LLC were performed under the supervision of a State of Oregon registered and certified Registered Land Surveyor. The bare-earth and highest-hit digital elevation surface models (DEM) produced by the three companies and made

available by DOGAMI as the Lidar Data Quadrangle (LDQ) series, are georeferenced raster grids (ESRI format) interpolated from the point cloud data.

The map images displayed here are examples by DOGAMI using GIS techniques to extract and emphasize selected features. These map images, the interpretative content displayed, and this lidar image series are for general information purposes and are not intended to indicate the authoritative location or definition of real property boundaries, the precise shape or contour of the earth, or the precise location of fixed works of human. No warranty, expressed or implied, is made regarding the accuracy or utility of the information described and/or contained herein, nor shall the act of distribution constitute any such warranty. This disclaimer applies both to individual use of the data and aggregate use with other data. The Oregon Department of Geology and Mineral Industries shall not be held liable for improper or incorrect use of this information.



For copies of this publication contact  
Nature of the Northwest Information Center  
800 NE Oregon Street #20, Ste. 365, Portland, Oregon 97232  
Telephone (503) 973-2333 <http://www.natureofnw.org>

