

2018

IMS-57
INTERPRETIVE MAP SERIES

by William J. Burns, Nancy C. Calhoun, Jon J. Franczyk,
Kassandra O. Lindsey, and Lina Ma

Funding for this project was partially provided by the Federal Emergency Management Agency (EMW-2014-CA-00289).

Funding for this project was partially provided by the Federal Emergency Management Agency (EMW-2014-CA-00289).

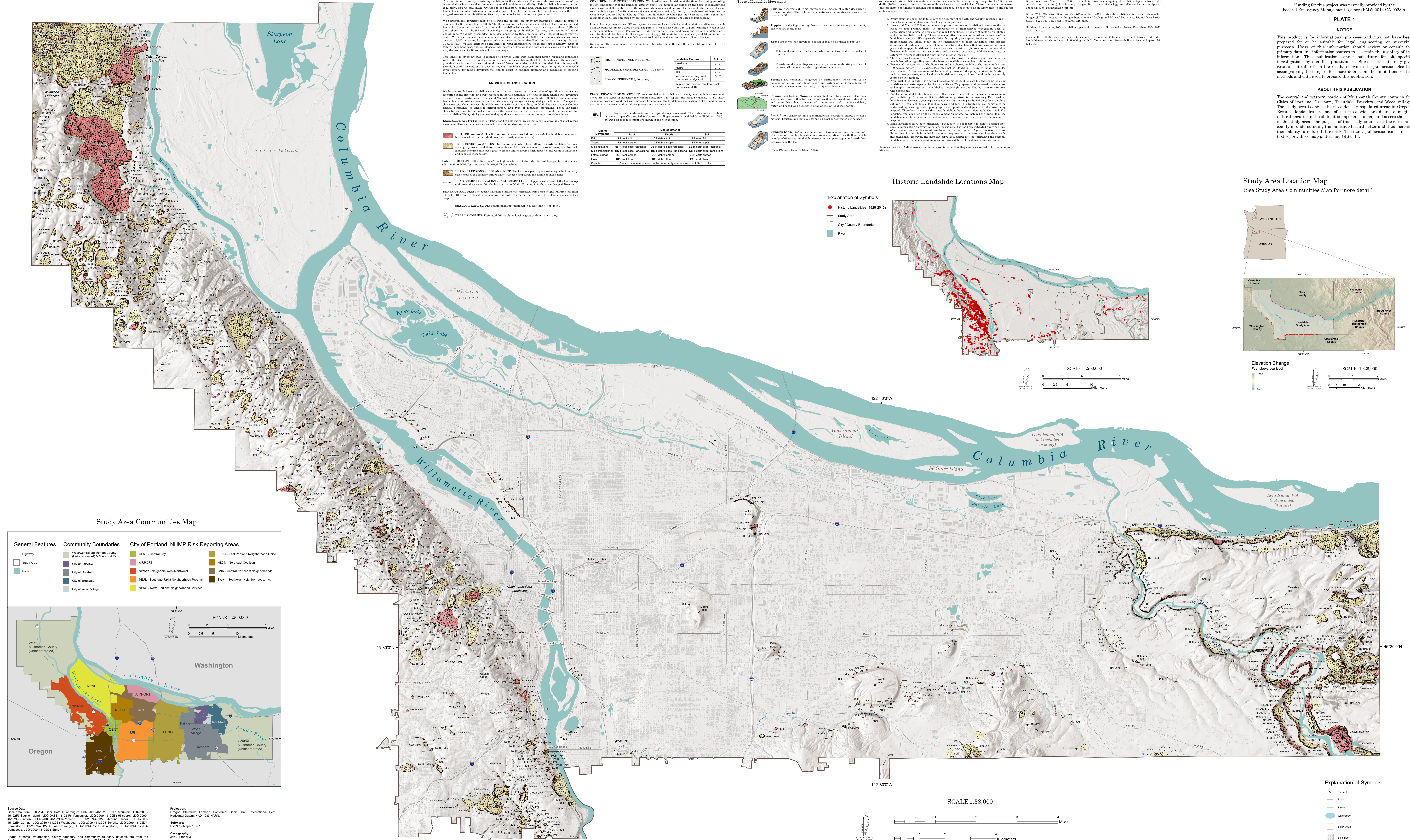
PLATE 1

NOTICE

This product is for informational purposes and may not have been prepared for or be suitable for legal, engineering, or surveying purposes. Users of this information should review or consult the primary data and information sources to ascertain the usability of the information. This publication cannot substitute for site-specific investigations by qualified practitioners. Site-specific data may give results that differ from the results shown in the publication. See the accompanying text report for more details on the limitations of the methods and data used to prepare this publication.

ABOUT THIS PUBLICATION

The central and western portion of Multnomah County contains the Cities of Portland, Gresham, Troutdale, Fairview, and Wood Village. The study area is one of the most densely populated areas in Oregon. Because landslides are one of the most widespread and damaging natural hazards in the state, it is important to map and assess the risk in the study area. The purpose of this study is to assist the cities and county in understanding the landslide hazard better and thus increase their ability to reduce future risk. The study publication consists of a text report, three map plates, and GIS data.



Source Data:
 Litter data from DOGAMI Litter Data Quadrangles LDQ-2009-45122F-Die Mountain, LDQ-2009-45122G-Sawtooth, LDQ-2009-45122H-Fishhook, LDQ-2009-45122I-Blackfoot, LDQ-2009-45122J-Portland, LDQ-2009-45122K-Mount Taylor, LDQ-2009-45122L-Cascade, LDQ-2009-45122M-Wishgull, LDQ-2009-45122N-Sagehen, LDQ-2009-45122O-Beaverton, LDQ-2009-45122P-Lake Oswego, LDQ-2009-45122Q-Gladstone, LDQ-2009-45122R-Damascus, LDQ-2009-45122S-Sandy.

Roads, streams, waterbodies, county boundary, and community boundary datasets are from the Regional Land Information System (RLIS), Oregon Metro. 2016. Additional physical and cultural resources data are from the Oregon Department of Geology and Mineral Industries, Oregon Natural Hazard Mitigation Plan (NHMP) risk reporting areas are from the City of Portland, Bureau of Emergency Management (2016).

Projection:
Oregon Statewide Lambert Conformal Conic, Unit: International Feet
Horizontal Datum: NAD 1983 HARN.

Software:
Esri® ArcMap® 10.5.1

Cartography:
Jon J. Franczyk

Cartography:
Jan J. Franczyk