

Geology and Mineral Resources Map of the Lakecreek Quadrangle, Jackson County, Oregon

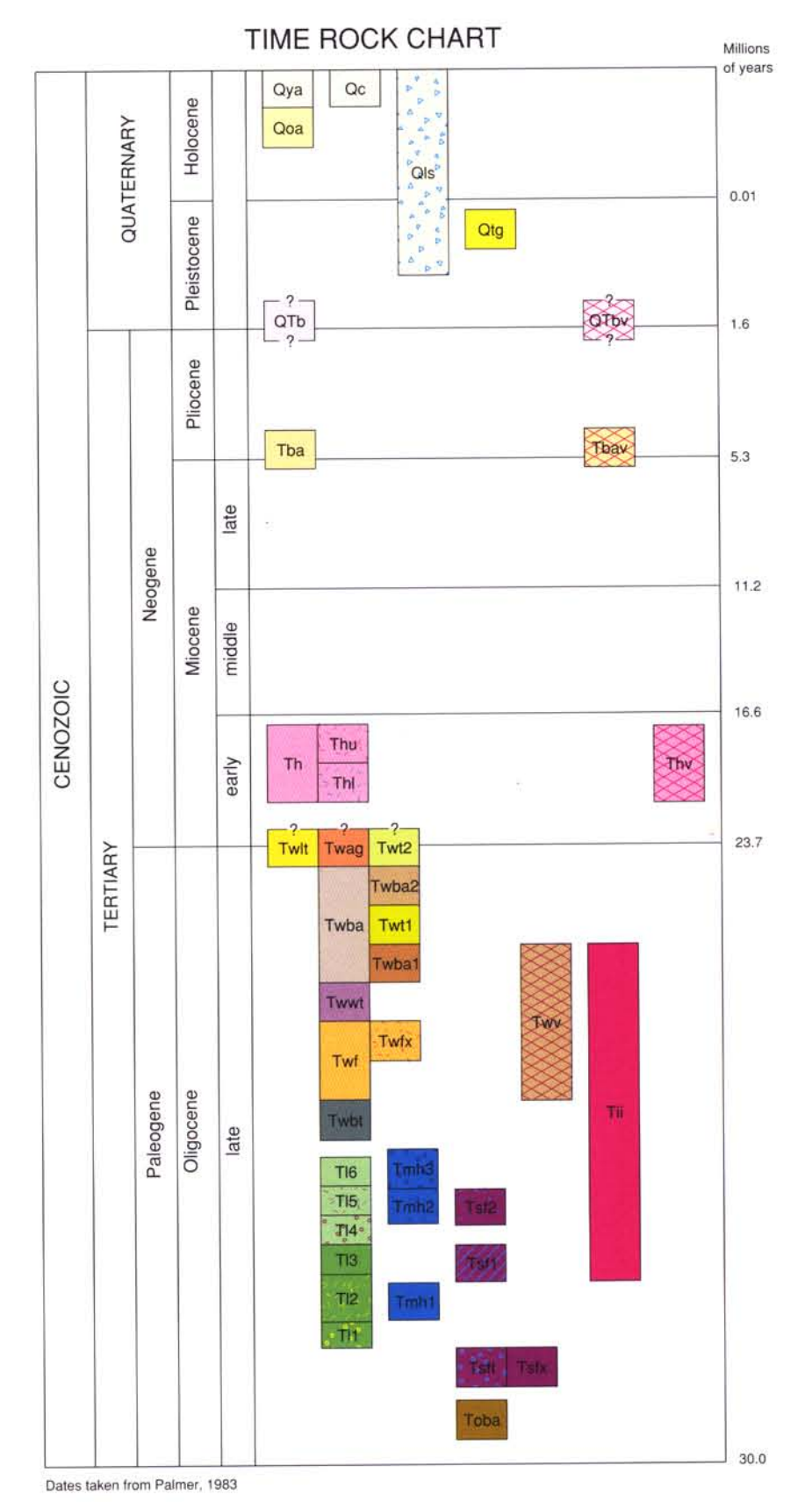
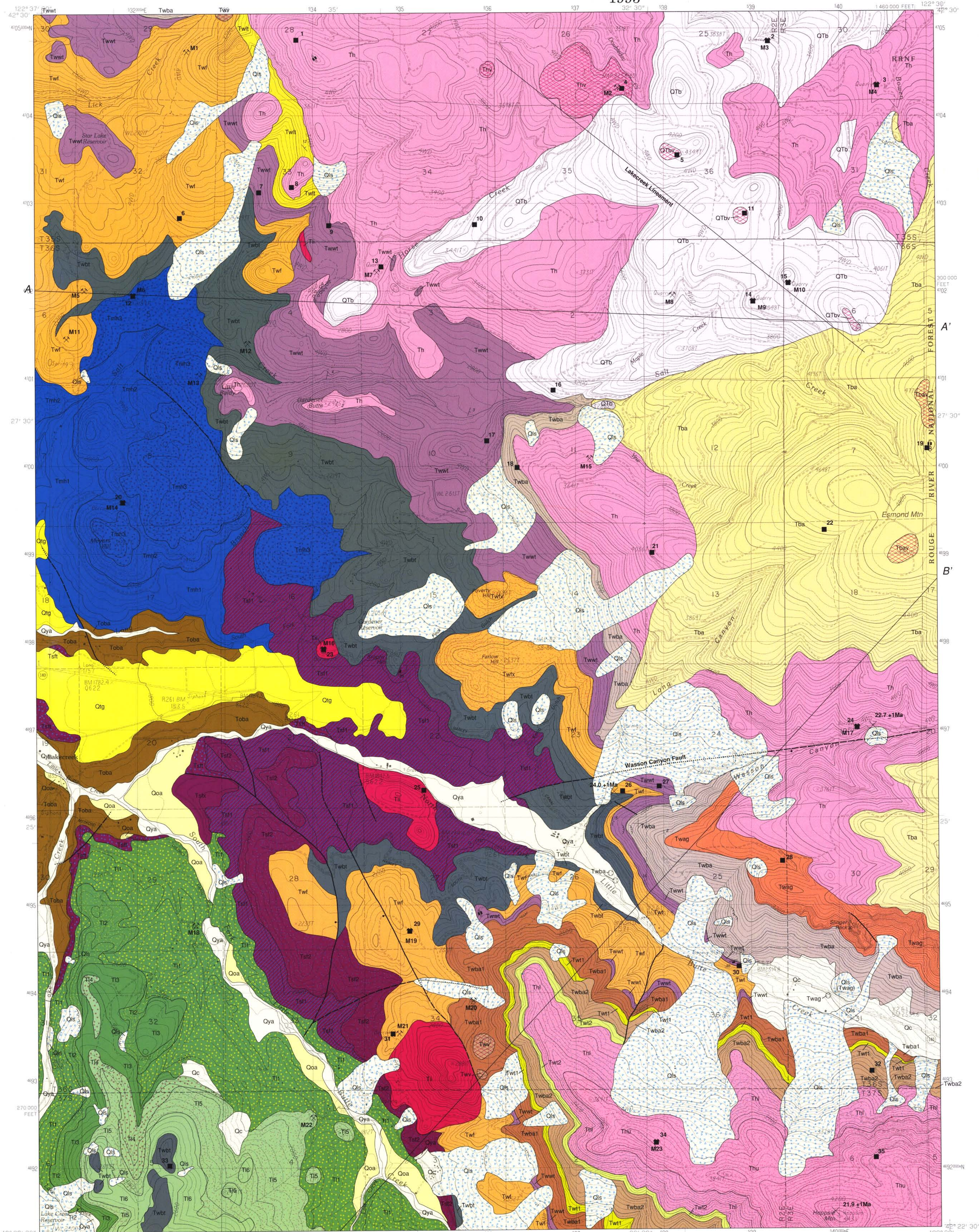
1995

GMS-88

Geology and Mineral Resources Map of the Lakecreek Quadrangle,
Jackson County, Oregon
By F.R. Hladky

Funded in part by the National Geologic Mapping Program (STATEMAP)
administered by the U.S. Geological Survey

Plate 1

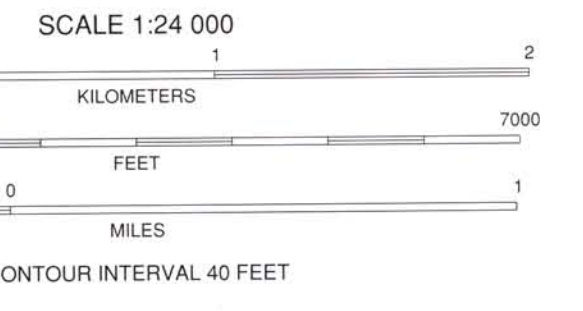


EXPLANATION OF MAP UNITS
(see accompanying text for full explanation)

- Surficial deposits**
- Oya Young alluvium (Holocene)
 - Oc Colluvium (Holocene)
 - Ols Landslide deposits (Holocene and Pleistocene)
 - Ooa Old alluvium (Holocene)
 - Otg Terrace gravel (Pleistocene)
- Quaternary or Tertiary volcanic rocks**
- OTb Olivine basalt and basaltic andesite (Pleistocene or Pliocene)
- Tertiary volcanic rocks**
- Tba Olivine basaltic andesite (Pliocene and upper Miocene)
 - Th Heppie Formation (lower Miocene)
 - Thu Upper part
 - Thl Lower part
 - Wason Formation (lower Miocene? and upper Oligocene)
 - Twat Lithic andesitic tuff (lower Miocene? and upper Oligocene)
 - Twag Flow agglomerate of Wells (1956) (lower Miocene? and upper Oligocene)
 - Tw2 Dacite tuff unit 2 (lower Miocene? and upper Oligocene)
 - Twba Basaltic andesite, undivided (upper Oligocene)
 - Twba2 Basaltic andesite unit 2 (upper Oligocene)
 - Twba1 Basaltic andesite unit 1 (upper Oligocene)
 - Twf1 Dacite tuff unit 1 (upper Oligocene)
 - Twvt White tuff of Wells (1956) (upper Oligocene)
 - Twf Lava flows of Wells (1956) (upper Oligocene)
 - Twx Andesitic tuff breccia (upper Oligocene)
 - Twv Buff tuff of Wells (1956) (upper Oligocene)
 - Basaltic andesite of Lake Creek (upper Oligocene)
 - Tl6 Flow unit 6
 - Tl5 Flow unit 5
 - Tl4 Flow unit 4
 - Tl3 Flow unit 3
 - Tl2 Flow unit 2
 - Tl1 Flow unit 1
 - Basaltic andesite of Meyers Hill (upper Oligocene)
 - Tl6b Flow unit 3
 - Tl6a Flow unit 2
 - Tl5b Flow unit 1
 - Volcanic rocks of the South Fork Little Butte Creek (upper Oligocene)
 - Tl2b Basaltic andesite flow unit 2
 - Tl2a Basaltic andesite flow unit 1
 - Tl1a Dacitic tuff
 - Tl1b Tuff breccia
 - Basaltic andesite of Little Butte Creek (upper Oligocene)
 - Tl1c Basaltic andesite
- Vent deposits and intrusive rocks**
- QTbv Basaltic vent deposits (Pleistocene or Pliocene)
 - Tbv Basaltic andesite vent deposits (Pliocene and upper Miocene)
 - Thv Hypabyssal and vent rocks of the Heppie Formation (lower Miocene)
 - Twv Basaltic to andesitic vent deposits of the Wason Formation (upper Oligocene)
 - Ti Intermediate intrusive rocks (upper Oligocene)

- MAP SYMBOLS**
- Contact - Approximately located
 - Fault - Dashed where inferred; dotted where concealed; ball and bar on downthrown side
 - Lineament
 - Strike and dip of beds
 - Strike and dip of beds - Visual field estimate or 3-point calculation
 - Strike and dip of dike
 - Vertical dike
 - Zone of lava invading tuff
 - Landslide scarps
 - Landslide boulder - 3-10 m across; rock type indicated
 - Sample or mine location - Showing map number. Symbols superimposed where location is the same. Data listed in Tables 1 and 2
 - Sample location (Table 1)
 - Mine location (Table 2)
 - Potassium-argon age sample site - Showing age in millions of years (Ma). From Fiebelkorn and others (1983)

Base map by U.S. Geological Survey
Control by USGS, NAD83, State of Oregon
Projection: Lambert Conformal Conic
Grid: 1000-meter Universal Transverse Mercator, Zone 10
10,000-foot State Grid Ticks, Oregon, South Zone
UTM grid declination: 18 minutes east
1980 magnetic north declination: 18 degrees, 30 minutes east
Vertical datum: National Geodetic Vertical Datum of 1929
Horizontal Datum: 1927 North American Datum



GEOLOGIC CROSS SECTIONS
Surficial units not shown.

