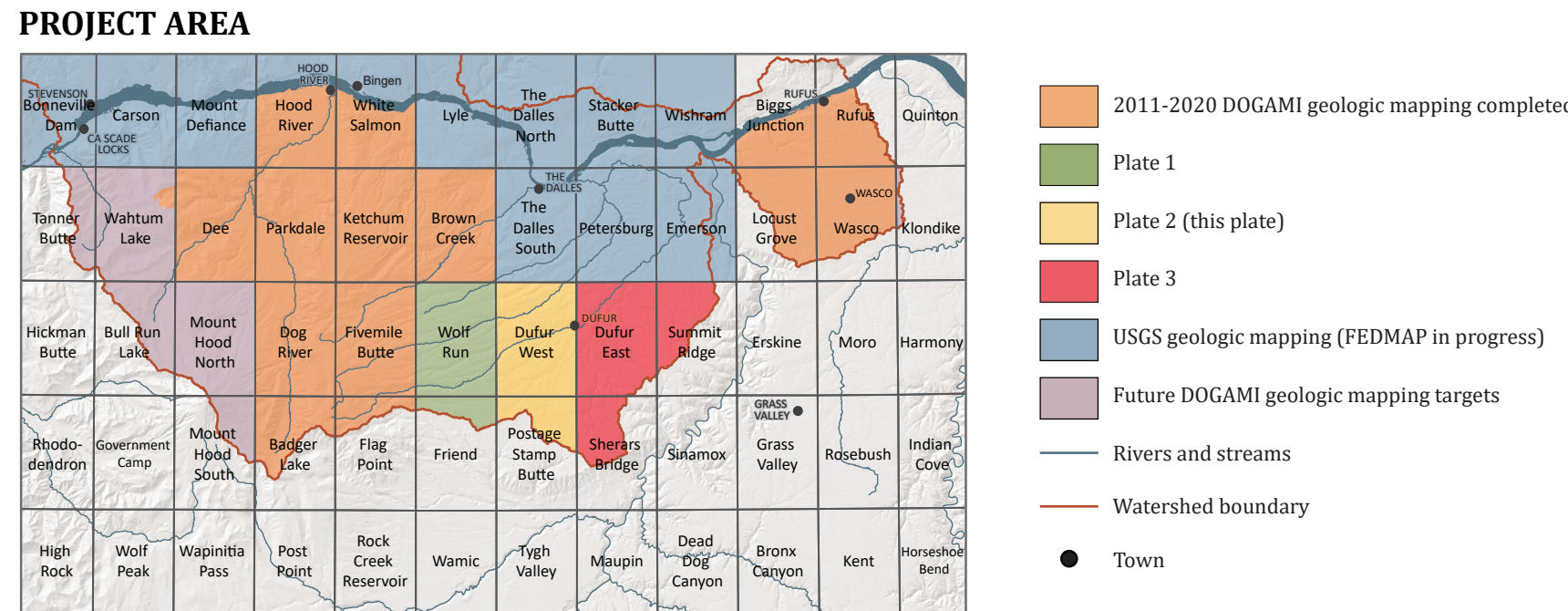
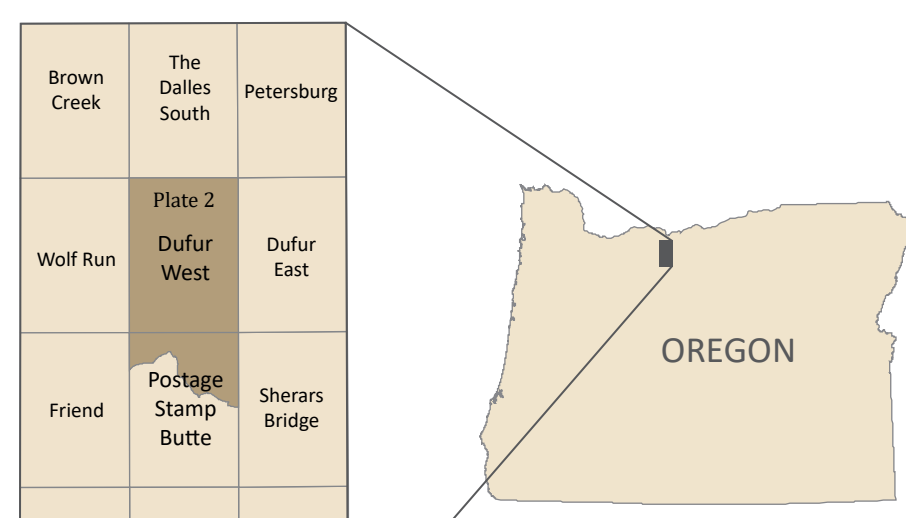
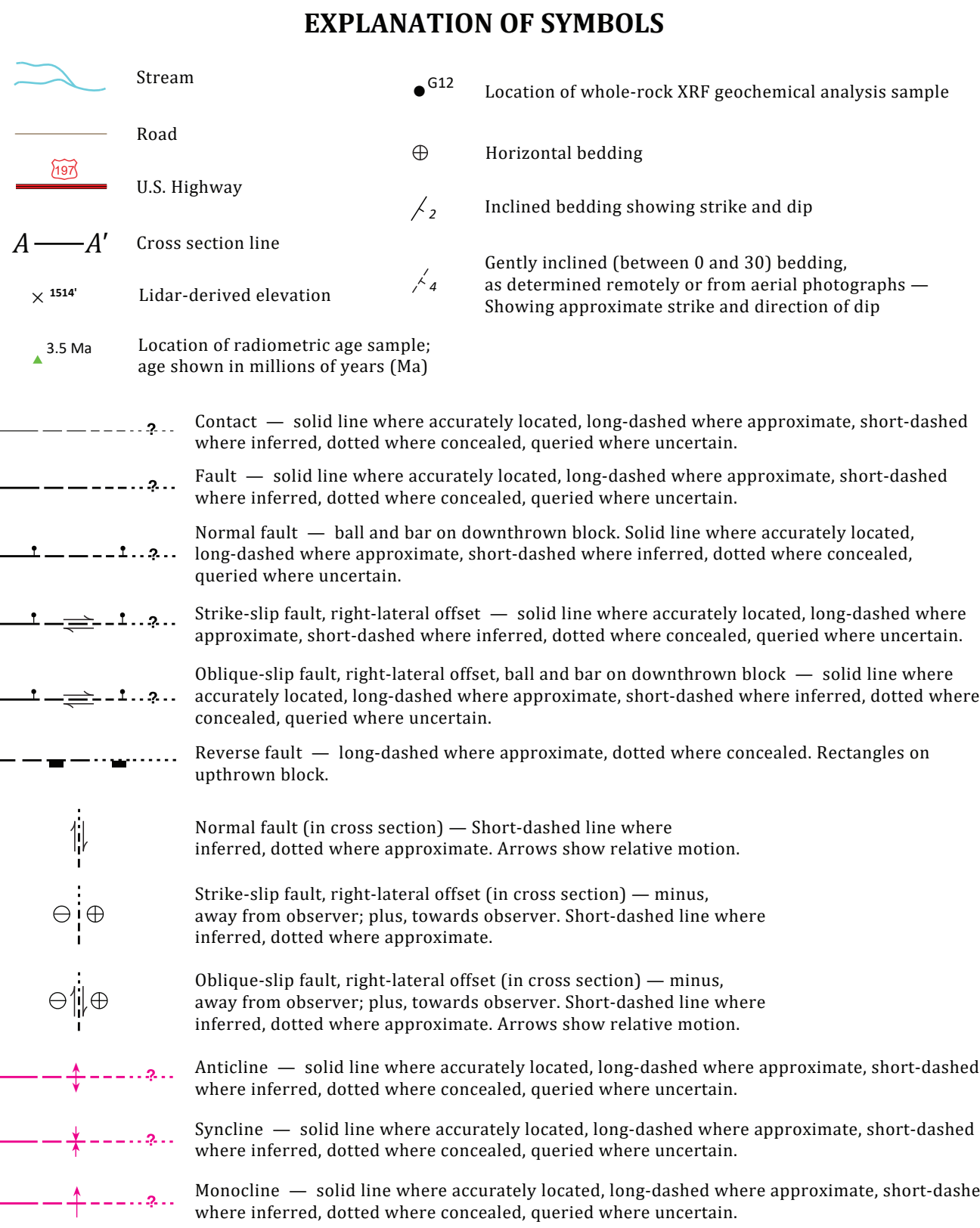
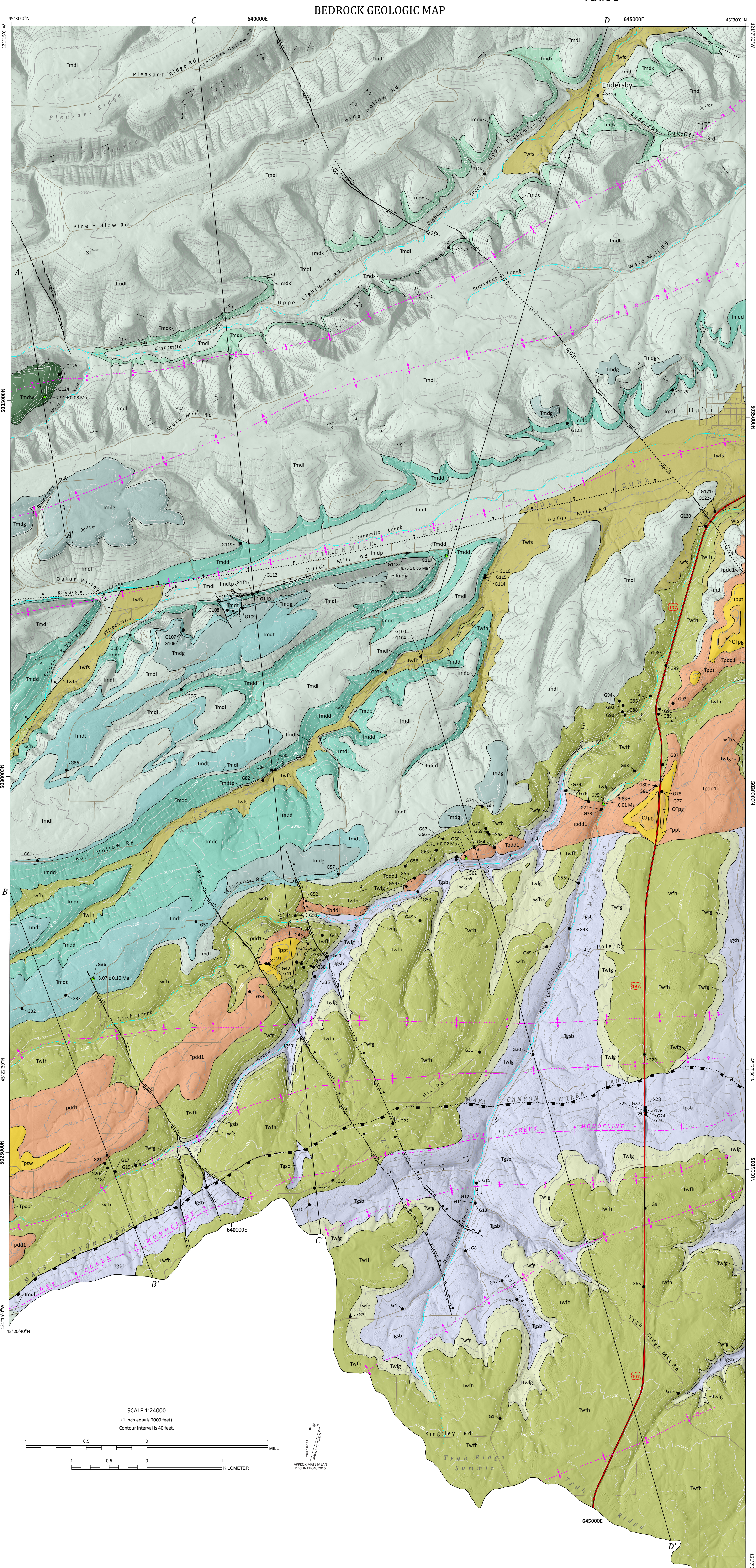
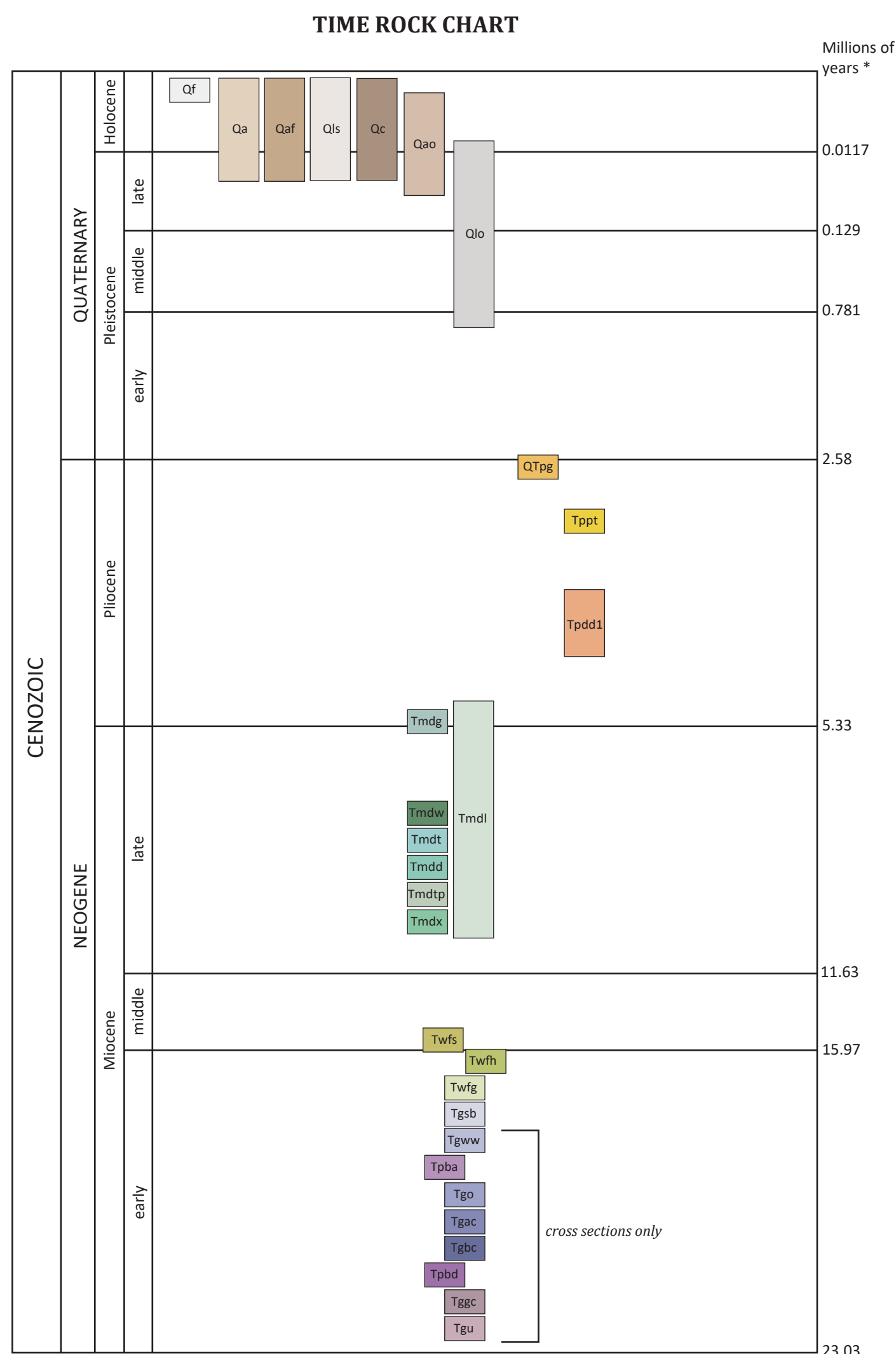
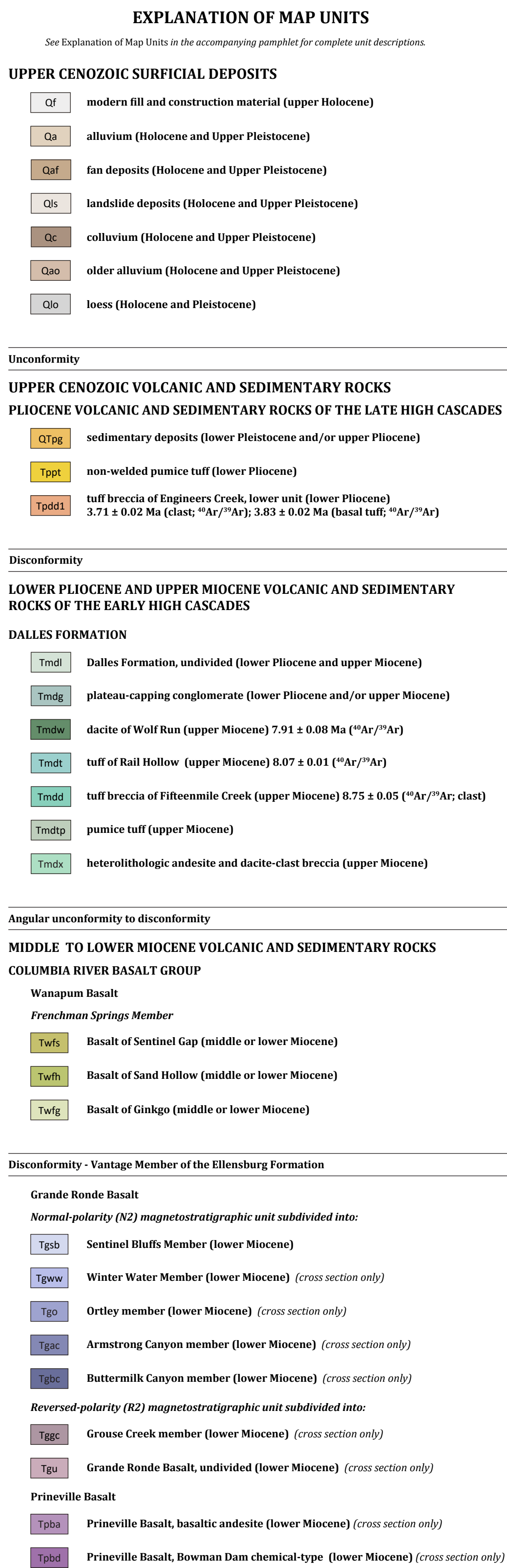


GMS-127

by Jason D. McClaughry, Heather H. Herinckx, Clark A. Niewendorf,
Carlie M. Arzonardi, and Joshua A. Hackert

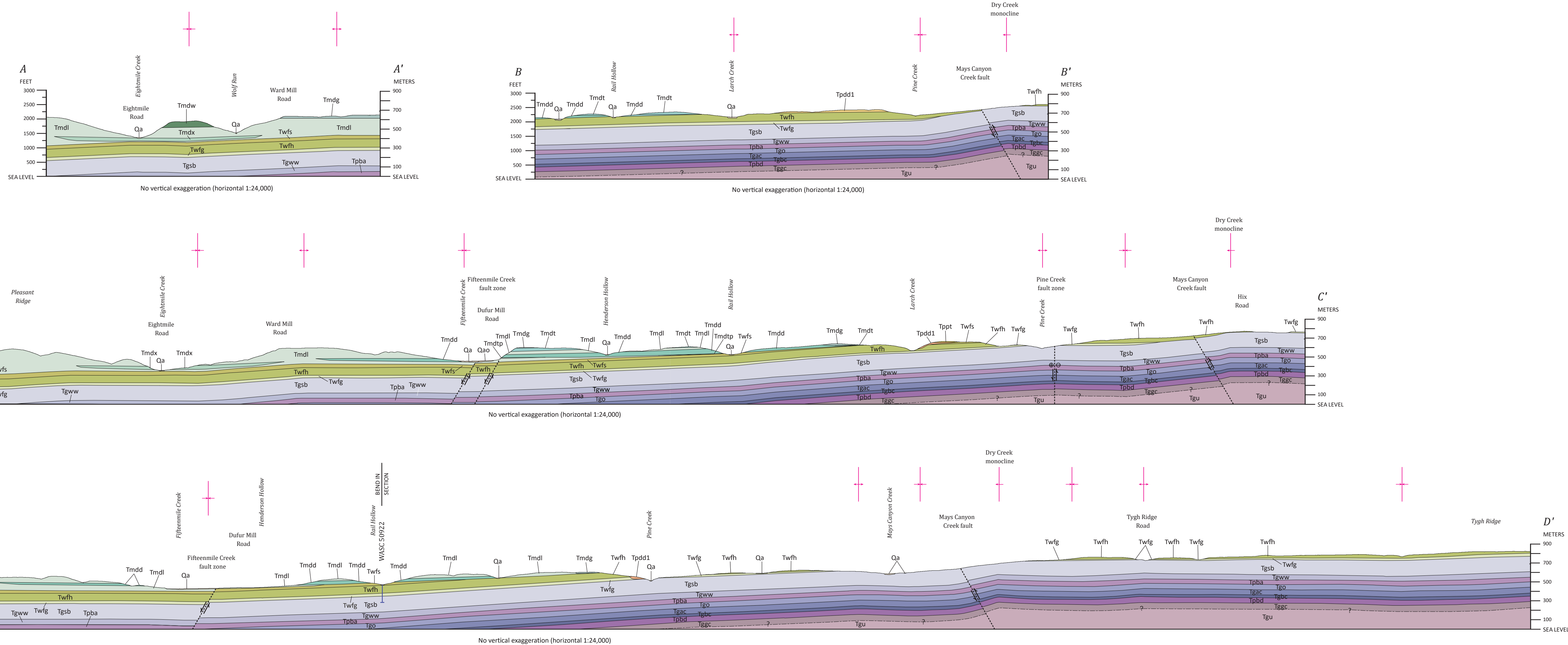
Geologic mapping in the Dufur area was supported through the STATEMAP component of the National Cooperative Geologic Mapping Program.

PLATE 2



GEOLOGIC CROSS SECTIONS

Note: Depth of exposure in the area of Plate 2 does not extend beneath the Sentinel Bluffs Member (unit Tgsb). Subsurface interpretation of map units displayed in geologic cross sections beneath unit Tgsb is interpreted on the basis of unpublished geologic mapping and measured stratigraphic sections provided by M.J. Sawlan and J.T. Hagstrum (written communication, 2015) in Butler Canyon (south of Plate 2). The precise northern limit of some ORBG units shown in the subsurface in the geologic cross sections is not known.



Data Source: Oregon Land Conservancies, 2015. J-look, bare earth digital elevation model (DEM) for Puget Sound Delta (45121-C2) and Debar West (45121-C2) quadrangles. Water features from USGS High Resolution National Hydrography Dataset (NHD) Aquatic Resources Information System (ARMSIS) (2017). Road features from Oregon Department of Transportation (ODOT) (2015).

Projection: Oregon Statewide Lambert Conformal Conic, Units: International Feet, Horizontal Datum: NAD 1983 HARN, UTM Coordinate: Zone 16N, NAD83.

Software: Esri ArcGIS® 10.7.1 and Adobe® Illustrator® 2019 v23.1

Field Work: Field work conducted by Jason D. McCaughy, Heather R. Herincik, and Joshua A. Hackett in 2014 and 2015.

References:
Cohen, K. M., Finney, S. C., Gibbard, P. L. and Fox, J.-X., 2013, The KS International Concentration Chart: *Estimates 96*, n. 199/2014.

Grazdonis, F. M., Ogg, J. G., and Smith, A. G., eds., 2004, A geologic time scale: Cambridge, U.K., Cambridge University Press, 589 p.

Geology Reviewers: Geology Reviewers: Jim O'Connor, USGS; Charlie Cannon, USGS; Mark

Digital Cartography: Jon J. Franciszyk, DOGAMI and John M. Baerz, DOGAMI (retired)

NOTICE: This manuscript is submitted for publication with the understanding that the United States Government is authorized to reproduce and distribute reprints for government purposes not withstanding any copyright notation that may appear hereon.

The United States Government is authorized to reproduce and distribute reprints for governmental use. The views and conclusions contained in this document are those of the authors and should not be interpreted as necessarily representing the official policies, either expressed or implied, of the U.S. government.

This product is for informational purposes and may not have been prepared for or be suitable for legal, engineering, or surveying purposes. Users of this information should review or consult the primary data and information sources to ascertain the usability

of the information. This publication cannot substitute for site-specific investigations by qualified practitioners. Site-specific data may give results that differ from the results shown in the publication.
